

Product datasheet

Anti-LEPRE1/P3H1 antibody [EPR10193(B)] ab154799

Recombinant RabMAb

★★★★★ [1 Abreviews](#) [1 References](#) [6 Images](#)

Overview

Product name	Anti-LEPRE1/P3H1 antibody [EPR10193(B)]
Description	Rabbit monoclonal [EPR10193(B)] to LEPRE1/P3H1
Host species	Rabbit
Tested applications	Suitable for: Flow Cyt (Intra), WB, ICC/IF, Indirect ELISA Unsuitable for: IHC-P or IP
Species reactivity	Reacts with: Human
Immunogen	Synthetic peptide within Human LEPRE1/P3H1. The exact sequence is proprietary.
Positive control	HeLa, HepG2, A549 and Human placenta lysates; HepG2 and A549 cells.
General notes	<p>This product is a recombinant monoclonal antibody, which offers several advantages including:</p> <ul style="list-style-type: none">- High batch-to-batch consistency and reproducibility- Improved sensitivity and specificity- Long-term security of supply- Animal-free production <p>For more information see here.</p> <p>Our RabMAb[®] technology is a patented hybridoma-based technology for making rabbit monoclonal antibodies. For details on our patents, please refer to RabMAb[®] patents.</p> <p>Mouse, Rat: We have preliminary internal testing data to indicate this antibody may not react with these species. Please contact us for more information.</p>

Properties

Form	Liquid
Storage instructions	Shipped at 4°C. Store at -20°C.
Storage buffer	pH: 7.2 Preservative: 0.01% Sodium azide Constituents: 9% PBS, 40% Glycerol (glycerin, glycerine), 0.05% BSA, 50% Tissue culture supernatant
Purity	Tissue culture supernatant
Clonality	Monoclonal

Clone number EPR10193(B)

Isotype IgG

Applications

The Abpromise guarantee Our **Abpromise guarantee** covers the use of ab154799 in the following tested applications.

The application notes include recommended starting dilutions; optimal dilutions/concentrations should be determined by the end user.

Application	Abreviews	Notes
Flow Cyt (Intra)		1/10 - 1/100. ab172730 - Rabbit monoclonal IgG, is suitable for use as an isotype control with this antibody.
WB	★★★★★ (1)	1/1000 - 1/10000. Predicted molecular weight: 83 kDa.
ICC/IF		1/250 - 1/500.
Indirect ELISA		Use at an assay dependent concentration.

Application notes Is unsuitable for IHC-P or IP.

Target

Function Basement membrane-associated chondroitin sulfate proteoglycan (CSPG). Has prolyl 3-hydroxylase activity catalyzing the post-translational formation of 3-hydroxyproline in -Xaa-Pro-Gly-sequences in collagens, especially types IV and V. May be involved in the secretory pathway of cells. Has growth suppressive activity in fibroblasts.

Involvement in disease Defects in LEPRE1 are the cause of osteogenesis imperfecta type 8 (OI8) [MIM:610915]. A connective tissue disorder characterized by disproportionate short stature, severe osteoporosis, shortening of the long bones, white sclerae, a round face and a short barrel-shaped chest.

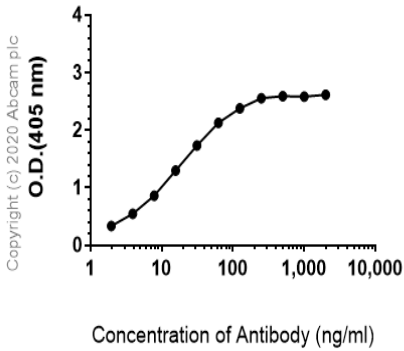
Sequence similarities Belongs to the leprecan family.
Contains 1 Fe2OG dioxygenase domain.
Contains 4 TPR repeats.

Post-translational modifications O-glycosylated; chondroitin sulfate.

Cellular localization Endoplasmic reticulum. Secreted > extracellular space > extracellular matrix. Secreted into the extracellular matrix as a chondroitin sulfate proteoglycan.

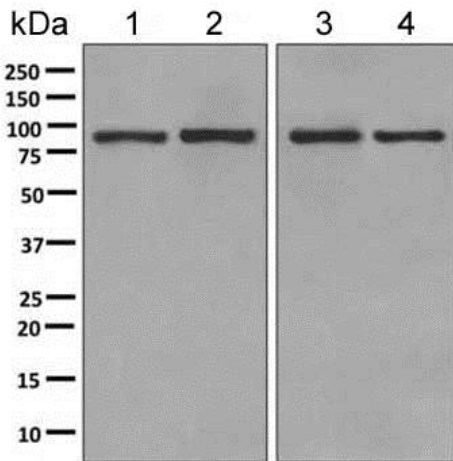
Images

**Indirect ELISA antibody dose-response curve
antigen at 1000 ng/ml**



Indirect ELISA - Anti-LEPRE1/P3H1 antibody
[EPR10193(B)] (ab154799)

ELISA using ab154799 at varying antibody concentrations and antigen concentration at 1000 ng/mL. An Alkaline Phosphatase-conjugated AffiniPure Goat Anti-Rabbit IgG (H+L) (1/2500) was used as the secondary antibody.



Western blot - Anti-LEPRE1/P3H1 antibody
[EPR10193(B)] (ab154799)

All lanes : Anti-LEPRE1/P3H1 antibody [EPR10193(B)]
(ab154799) at 1/1000 dilution

Lane 1 : HeLa cell lysate

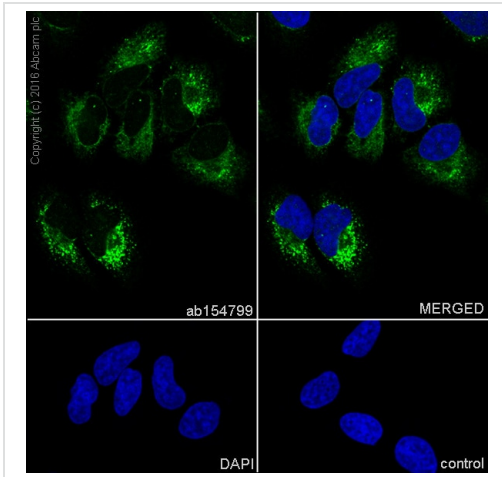
Lane 2 : HepG2 cell lysate

Lane 3 : A549 cell lysate

Lane 4 : Human placenta tissue lysate

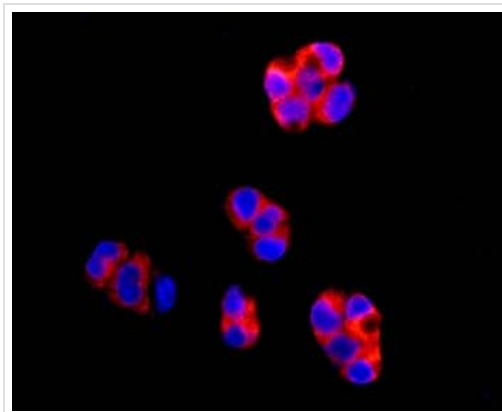
Lysates/proteins at 10 µg per lane.

Predicted band size: 83 kDa



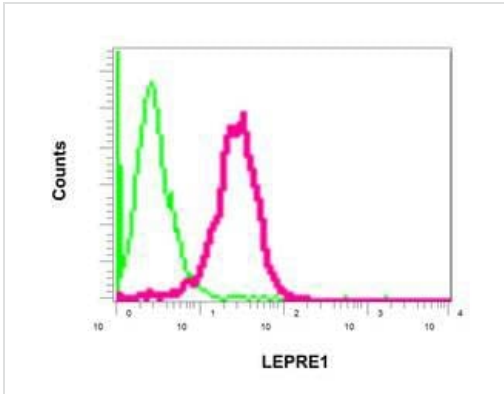
Immunocytochemistry/ Immunofluorescence - Anti-LEPRE1/P3H1 antibody [EPR10193(B)] (ab154799)

Immunocytochemistry/Immunofluorescence analysis of HeLa (Human epithelial cell line from cervix adenocarcinoma) labeling LEPRE1/P3H1 with Purified ab154799 at 1/500 dilution (5µg/ml). Cells were fixed with 100% methanol. **ab150077** Goat anti rabbit IgG(Alexa Fluor® 488) at 1/1000 dilution was used as the secondary antibody. Nuclei were counterstained with DAPI. PBS was used instead of the primary antibody as the negative control.



Immunocytochemistry/ Immunofluorescence - Anti-LEPRE1/P3H1 antibody [EPR10193(B)] (ab154799)

Immunofluorescence analysis of HepG2 cells labeling LEPRE1/P3H1 with ab154799 at 1/250 dilution.



Intracellular flow cytometric analysis of permeabilized A549 cells labeling LEPRE1/P3H1 with ab154799 at 1/10 dilution (red) or a negative rabbit IgG (green).

Flow Cytometry (Intracellular) - Anti-LEPRE1/P3H1 antibody [EPR10193(B)] (ab154799)

Why choose a recombinant antibody?

 <p>Research with confidence Consistent and reproducible results</p>	 <p>Long-term and scalable supply Recombinant technology</p>
 <p>Success from the first experiment Confirmed specificity</p>	 <p>Ethical standards compliant Animal-free production</p>

Anti-LEPRE1/P3H1 antibody [EPR10193(B)] (ab154799)

Please note: All products are "FOR RESEARCH USE ONLY. NOT FOR USE IN DIAGNOSTIC PROCEDURES"

Our Promise to you: Quality guaranteed and expert technical support

- Replacement or refund for products not performing as stated on the datasheet
- Valid for 12 months from date of delivery
- Response to your inquiry within 24 hours
- We provide support in Chinese, English, French, German, Japanese and Spanish
- Extensive multi-media technical resources to help you

- We investigate all quality concerns to ensure our products perform to the highest standards

If the product does not perform as described on this datasheet, we will offer a refund or replacement. For full details of the Abpromise, please visit <https://www.abcam.com/abpromise> or contact our technical team.

Terms and conditions

- Guarantee only valid for products bought direct from Abcam or one of our authorized distributors