




Product datasheet

Anti-Leptin Receptor antibody ab216690

[2 Images](#)

Overview

Product name	Anti-Leptin Receptor antibody
Description	Rabbit polyclonal to Leptin Receptor
Host species	Rabbit
Tested applications	Suitable for: Flow Cyt, IHC-P
Species reactivity	Reacts with: Mouse, Human Predicted to work with: Rat 
Immunogen	Synthetic peptide aa 500-600 conjugated to keyhole limpet haemocyanin. The exact immunogen sequence used to generate this antibody is proprietary information. If additional detail on the immunogen is needed to determine the suitability of the antibody for your needs, please contact our Scientific Support team to discuss your requirements. Database link: P48357  Run BLAST with  Run BLAST with
Positive control	K562 cells
General notes	<p>The Life Science industry has been in the grips of a reproducibility crisis for a number of years. Abcam is leading the way in addressing this with our range of recombinant monoclonal antibodies and knockout edited cell lines for gold-standard validation. Please check that this product meets your needs before purchasing.</p> <p>If you have any questions, special requirements or concerns, please send us an inquiry and/or contact our Support team ahead of purchase. Recommended alternatives for this product can be found below, along with publications, customer reviews and Q&As</p>

Properties

Form	Liquid
Storage instructions	Shipped at 4°C. Store at +4°C short term (1-2 weeks). Upon delivery aliquot. Store at -20°C long term. Avoid freeze / thaw cycle.
Storage buffer	pH: 7.40 Preservative: 0.02% Proclin 300 Constituents: 50% Glycerol (glycerin, glycerine), 1% BSA, 48.98% TBS, 1X
Purity	Protein A purified
Clonality	Polyclonal

Isotype

IgG

Applications

The Abpromise guarantee

Our **Abpromise guarantee** covers the use of ab216690 in the following tested applications.

The application notes include recommended starting dilutions; optimal dilutions/concentrations should be determined by the end user.

Application	Abreviews	Notes
Flow Cyt		1/20 - 1/100.
IHC-P		1/200.

Target

Function

Receptor for obesity factor (leptin). On ligand binding, mediates signaling through JAK2/STAT3. Involved in the regulation of fat metabolism and, in a hematopoietic pathway, required for normal lymphopoiesis. May play a role in reproduction. Can also mediate the ERK/FOS signaling pathway.

Tissue specificity

Isoform A is expressed in fetal liver and in hematopoietic tissues and choroid plexus. In adults highest expression in heart, liver, small intestine, prostate and ovary. Low level in lung and kidney. Isoform B is highly expressed in hypothalamus.

Sequence similarities

Belongs to the type I cytokine receptor family. Type 2 subfamily.
Contains 4 fibronectin type-III domains.
Contains 1 Ig-like (immunoglobulin-like) domain.

Domain

The cytoplasmic domain may be essential for intracellular signal transduction by activation of JAK tyrosine kinase and STATs.
The WSXWS motif appears to be necessary for proper protein folding and thereby efficient intracellular transport and cell-surface receptor binding.
The box 1 motif is required for JAK interaction and/or activation.

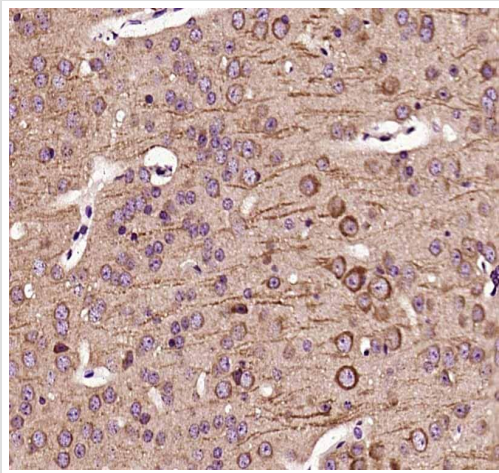
Post-translational modifications

On ligand binding, phosphorylated on two conserved C-terminal tyrosine residues (isoform B only) by JAK2. Tyr-986 is required for complete binding and activation of PTPN11, ERK/FOS activation and, for interaction with SOCS3 (By similarity). Phosphorylation on Tyr-1141 is required for STAT3 binding/activation.

Cellular localization

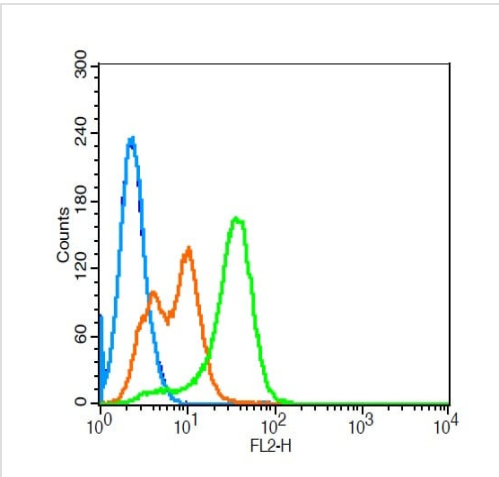
Secreted and Cell membrane.

Images



Immunohistochemistry (Formalin/PFA-fixed paraffin-embedded sections) of Mouse Brain with ab216690 at 1/200

Immunohistochemistry (Formalin/PFA-fixed paraffin-embedded sections) - Anti-Leptin Receptor antibody (ab216690)



Flow cytometric analysis of K562 cells labeling Leptin Receptor using ab216690 at 3 µg for 30 minutes, followed by incubation with a conjugated secondary (PE Conjugated) (green) for 30 minutes, compared to control cells (blue), secondary only (light blue) and isotype control (orange).

Flow Cytometry - Anti-Leptin Receptor antibody (ab216690)

Please note: All products are "FOR RESEARCH USE ONLY. NOT FOR USE IN DIAGNOSTIC PROCEDURES"

Our Abpromise to you: Quality guaranteed and expert technical support

- Replacement or refund for products not performing as stated on the datasheet
- Valid for 12 months from date of delivery

- Response to your inquiry within 24 hours
- We provide support in Chinese, English, French, German, Japanese and Spanish
- Extensive multi-media technical resources to help you
- We investigate all quality concerns to ensure our products perform to the highest standards

If the product does not perform as described on this datasheet, we will offer a refund or replacement. For full details of the Abpromise, please visit <https://www.abcam.com/abpromise> or contact our technical team.

Terms and conditions

- Guarantee only valid for products bought direct from Abcam or one of our authorized distributors