


Anti-LETMD1/HCCR-1 antibody ab175410

[1 References](#) [5 Images](#)

Overview

Product name	Anti-LETMD1/HCCR-1 antibody
Description	Rabbit polyclonal to LETMD1/HCCR-1
Host species	Rabbit
Tested applications	Suitable for: ICC/IF, WB, IHC-P
Species reactivity	Reacts with: Mouse, Rat, Human Predicted to work with: Cow 
Immunogen	Recombinant full length protein corresponding to Human LETMD1/HCCR-1 aa 1-360. Sequence:

MALSRVCWARSVWGSVTPGHFVTRRLQLGRSGLAW
GAPRSSKLHLSPK
ADVKNLMSYVVTCKAINGKYHRFLGRHFPRFYVLYTIFMK
GLQMLWADA
KKARRIKTNMWKHNKFKHQLPYREMEHLRQFRQDVTCKLF
LGIISPPFA
NYLVFLLMYLFPRQLLIRHFWTPKQQTDFLDYHAFRKQSH
PEISYLEK
VIPLISDAGLRWRLTDLCTKIQRGTHPAIHDILALRECFSNH
PLGMNQLQ
ALHVKALSRAMLLTSYLPPLLRLHRLKTHTTVIHQDKALA
KLGIGQLTA
QEVKSACYLRGLNSTHIGEDRCRTWLGEWLQISCSLKEAE
LSLLLHNVVL LSTNYLGTRR

Database link: [Q6P1Q0](#)

 [Run BLAST with](#)

 [Run BLAST with](#)

Positive control PANC1 cell extract.

General notes

The Life Science industry has been in the grips of a reproducibility crisis for a number of years. Abcam is leading the way in addressing this with our range of recombinant monoclonal antibodies and knockout edited cell lines for gold-standard validation. Please check that this product meets your needs before purchasing.

If you have any questions, special requirements or concerns, please send us an inquiry and/or contact our Support team ahead of purchase. Recommended alternatives for this product can be found below, along with publications, customer reviews and Q&As

Properties

Form	Liquid
Storage instructions	Shipped at 4°C. Store at +4°C short term (1-2 weeks). Upon delivery aliquot. Store at -20°C long term. Avoid freeze / thaw cycle.
Storage buffer	pH: 7.30 Preservative: 0.02% Sodium azide Constituents: 49% PBS, 50% Glycerol
Purity	Immunogen affinity purified
Clonality	Polyclonal
Isotype	IgG

Applications

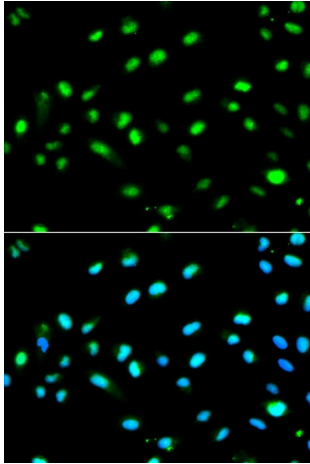
The Abpromise guarantee Our **Abpromise guarantee** covers the use of ab175410 in the following tested applications. The application notes include recommended starting dilutions; optimal dilutions/concentrations should be determined by the end user.

Application	Abreviews	Notes
ICC/IF		Use at an assay dependent concentration.
WB		1/500 - 1/2000. Predicted molecular weight: 42 kDa.
IHC-P		1/50 - 1/200.

Target

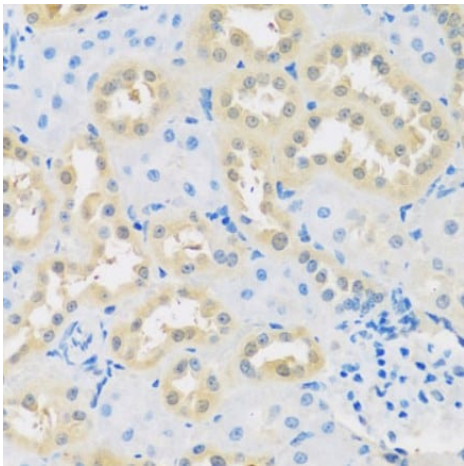
Relevance	LETMD1 is involved in tumorigenesis and may function as a negative regulator of the TP53/p53. It is found in kidney, liver, skeletal muscle, heart and brain and is over-expressed in various tumors including leukemia, lymphoma, and carcinomas of the breast, kidney, ovary, stomach, colon and uterine cervix. There are six isoforms.
Cellular localization	Membrane; Single-pass membrane protein

Images



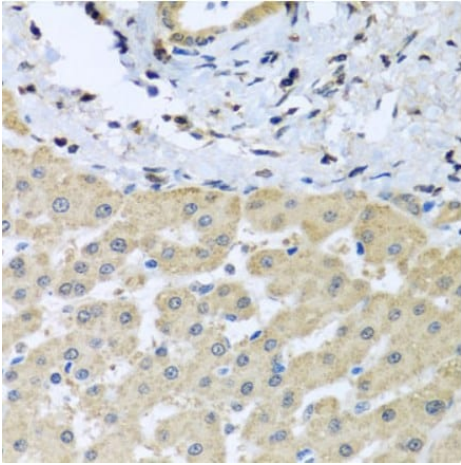
Immunocytochemistry/Immunofluorescence analysis of MCF7 cells using ab175410. Blue DAPI for nuclear staining.

Immunocytochemistry/ Immunofluorescence - Anti-LETMD1/HCCR-1 antibody (ab175410)



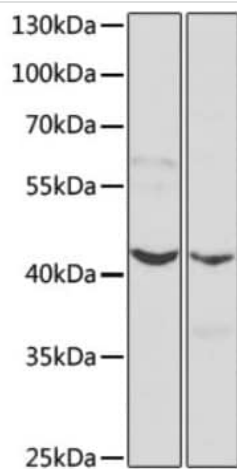
Immunohistochemistry of paraffin-embedded rat kidney damage using ab175410 at dilution of 1:100

Immunohistochemistry (Formalin/PFA-fixed paraffin-embedded sections) - Anti-LETMD1/HCCR-1 antibody (ab175410)



Immunohistochemistry (Formalin/PFA-fixed paraffin-embedded sections) - Anti-LETMD1/HCCR-1 antibody (ab175410)

Immunohistochemistry of paraffin-embedded human liver damage using ab175410 at dilution of 1:100



Western blot - Anti-LETMD1/HCCR-1 antibody (ab175410)

All lanes : Anti-LETMD1/HCCR-1 antibody (ab175410) at 1/1000 dilution

Lane 1 : MCF7 cell lysate with 3% nonfat dry milk in TBST.

Lane 2 : Mouse liver lysate with 3% nonfat dry milk in TBST.

Lysates/proteins at 25 µg per lane.

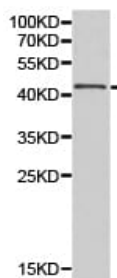
Secondary

All lanes : HRP Goat Anti-Rabbit IgG (H+L) at 1/1000 dilution

Developed using the ECL technique.

Predicted band size: 42 kDa

Exposure time: 90 seconds



Western blot - Anti-LETMD1/HCCR-1 antibody
(ab175410)

Anti-LETMD1/HCCR-1 antibody (ab175410) at 1/500 dilution +
PANC1 cell extract

Predicted band size: 42 kDa

Please note: All products are "FOR RESEARCH USE ONLY. NOT FOR USE IN DIAGNOSTIC PROCEDURES"

Our Abpromise to you: Quality guaranteed and expert technical support

- Replacement or refund for products not performing as stated on the datasheet
- Valid for 12 months from date of delivery
- Response to your inquiry within 24 hours
- We provide support in Chinese, English, French, German, Japanese and Spanish
- Extensive multi-media technical resources to help you
- We investigate all quality concerns to ensure our products perform to the highest standards

If the product does not perform as described on this datasheet, we will offer a refund or replacement. For full details of the Abpromise, please visit <https://www.abcam.com/abpromise> or contact our technical team.

Terms and conditions

- Guarantee only valid for products bought direct from Abcam or one of our authorized distributors