


### Anti-LIFR antibody ab101228

★★★★★ [1 Abreviews](#) [9 References](#) [2 Images](#)

#### Overview

<b>Product name</b>	Anti-LIFR antibody
<b>Description</b>	Rabbit polyclonal to LIFR
<b>Host species</b>	Rabbit
<b>Tested applications</b>	<b>Suitable for:</b> IHC-P, WB
<b>Species reactivity</b>	<b>Reacts with:</b> Mouse <b>Predicted to work with:</b> Rat, Horse, Human, Pig, Chimpanzee, Macaque monkey, Orangutan 
<b>Immunogen</b>	Synthetic peptide corresponding to Mouse LIFR aa 500-600 conjugated to keyhole limpet haemocyanin. (Peptide available as <a href="#">ab130816</a> )
<b>Positive control</b>	This antibody gave a positive signal in Mouse Placenta tissue lysate and in mouse placenta FFPE tissue sections.
<b>General notes</b>	<p>The Life Science industry has been in the grips of a reproducibility crisis for a number of years. Abcam is leading the way in addressing this with our range of recombinant monoclonal antibodies and knockout edited cell lines for gold-standard validation. Please check that this product meets your needs before purchasing.</p> <p>If you have any questions, special requirements or concerns, please send us an inquiry and/or contact our Support team ahead of purchase. Recommended alternatives for this product can be found below, along with publications, customer reviews and Q&amp;As</p>

#### Properties

<b>Form</b>	Liquid
<b>Storage instructions</b>	Shipped at 4°C. Store at +4°C short term (1-2 weeks). Upon delivery aliquot. Store at -20°C or -80°C. Avoid freeze / thaw cycle.
<b>Storage buffer</b>	pH: 7.40 Preservative: 0.02% Sodium azide Constituent: PBS  Batches of this product that have a concentration < 1mg/ml may have BSA added as a stabilising agent. If you would like information about the formulation of a specific lot, please contact our scientific support team who will be happy to help.

<b>Purity</b>	Immunogen affinity purified
<b>Clonality</b>	Polyclonal
<b>Isotype</b>	IgG

## Applications

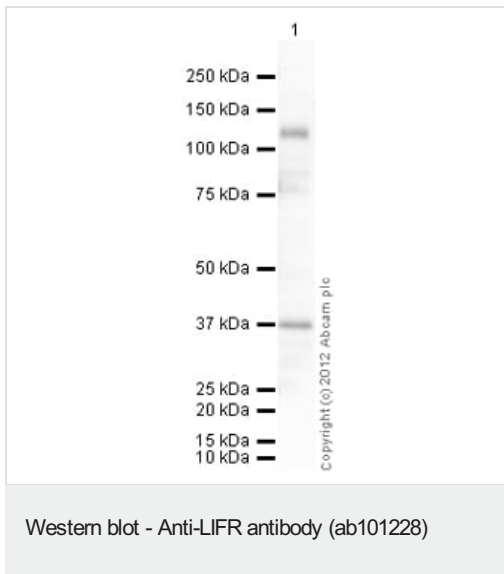
**The Abpromise guarantee** Our **Abpromise guarantee** covers the use of ab101228 in the following tested applications. The application notes include recommended starting dilutions; optimal dilutions/concentrations should be determined by the end user.

Application	Abreviews	Notes
IHC-P	★★★★★ (1)	Use a concentration of 1 µg/ml. Perform heat mediated antigen retrieval before commencing with IHC staining protocol.
WB		Use a concentration of 1 µg/ml. Detects a band of approximately 122 kDa (predicted molecular weight: 122 kDa).

## Target

<b>Function</b>	Signal-transducing molecule. May have a common pathway with IL6ST. The soluble form inhibits the biological activity of LIF by blocking its binding to receptors on target cells.
<b>Involvement in disease</b>	<p>Defects in LIFR are the cause of Stueve-Wiedemann syndrome (SWS) [MIM:601559]; also known as Schwartz-Jampel syndrome type 2 (SJS2). SWS is a severe autosomal recessive condition and belongs to the group of the bent-bone dysplasias. SWS is characterized by bowing of the lower limbs, with internal cortical thickening, wide metaphyses with abnormal trabecular pattern, and camptodactyly. Additional features include feeding and swallowing difficulties, as well as respiratory distress and hyperthermic episodes, which cause death in the first months of life. The rare survivors develop progressive scoliosis, spontaneous fractures, bowing of the lower limbs, with prominent joints and dysautonomia symptoms, including temperature instability, absent corneal and patellar reflexes, and smooth tongue.</p> <p>Note=A chromosomal aberration involving LIFR is found in salivary gland pleiomorphic adenomas, the most common benign epithelial tumors of the salivary gland. Translocation t(5;8) (p13;q12) with PLAG1.</p>
<b>Sequence similarities</b>	<p>Belongs to the type I cytokine receptor family. Type 2 subfamily.</p> <p>Contains 6 fibronectin type-III domains.</p>
<b>Domain</b>	<p>The WSXWS motif appears to be necessary for proper protein folding and thereby efficient intracellular transport and cell-surface receptor binding.</p> <p>The box 1 motif is required for JAK interaction and/or activation.</p>
<b>Cellular localization</b>	Secreted and Cell membrane.

## Images



Anti-LIFR antibody (ab101228) at 1 µg/ml + Mouse Placenta Tissue Lysate at 10 µg

### Secondary

Goat Anti-Rabbit IgG H&L (HRP) preadsorbed ([ab97080](#)) at 1/5000 dilution

Developed using the ECL technique.

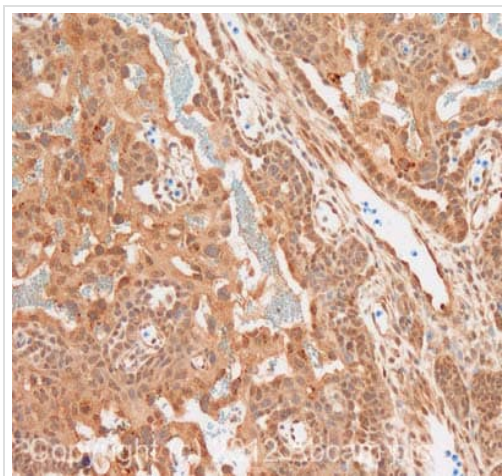
Performed under reducing conditions.

**Predicted band size:** 122 kDa

**Observed band size:** 122 kDa

**Additional bands at:** 37 kDa. We are unsure as to the identity of these extra bands.

**Exposure time:** 90 seconds



Immunohistochemistry (Formalin/PFA-fixed paraffin-embedded sections) - Anti-LIFR antibody (ab101228)

IHC image of LIFR staining in mouse placenta formalin fixed paraffin embedded tissue section, performed on a Leica Bond™ system using the standard protocol B. The section was pre-treated using heat mediated antigen retrieval with sodium citrate buffer (pH6, epitope retrieval solution 1) for 20 mins. The section was then incubated with ab101228, 1µg/ml, for 15 mins at room temperature. A goat anti-rabbit biotinylated secondary antibody was used to detect the primary, and visualized using an HRP conjugated ABC system. DAB was used as the chromogen. The section was then counterstained with haematoxylin and mounted with DPX.

For other IHC staining systems (automated and non-automated) customers should optimize variable parameters such as antigen retrieval conditions, primary antibody concentration and antibody incubation times.

**Please note:** All products are "FOR RESEARCH USE ONLY. NOT FOR USE IN DIAGNOSTIC PROCEDURES"

### Our Abpromise to you: Quality guaranteed and expert technical support

- Replacement or refund for products not performing as stated on the datasheet

- Valid for 12 months from date of delivery
- Response to your inquiry within 24 hours
- We provide support in Chinese, English, French, German, Japanese and Spanish
- Extensive multi-media technical resources to help you
- We investigate all quality concerns to ensure our products perform to the highest standards

If the product does not perform as described on this datasheet, we will offer a refund or replacement. For full details of the Abpromise, please visit <https://www.abcam.com/abpromise> or contact our technical team.

#### **Terms and conditions**

---

- Guarantee only valid for products bought direct from Abcam or one of our authorized distributors