


Anti-LIG1 antibody [EPR12464] - BSA and Azide free ab240202

Recombinant RabMAb

4 Images

Overview

| | |
|---------------------|---|
| Product name | Anti-LIG1 antibody [EPR12464] - BSA and Azide free |
| Description | Rabbit monoclonal [EPR12464] to LIG1 - BSA and Azide free |
| Host species | Rabbit |
| Tested applications | Suitable for: WB, ICC/IF, IHC-P Unsuitable for: Flow Cyt or IP |
| Species reactivity | Reacts with: Human Predicted to work with: Rat  Does not react with: Mouse |
| Immunogen | Synthetic peptide. This information is proprietary to Abcam and/or its suppliers. |
| General notes | <p>ab240202 is the carrier-free version of ab177946.</p> <p>Our carrier-free antibodies are typically supplied in a PBS-only formulation, purified and free of BSA, sodium azide and glycerol. The carrier-free buffer and high concentration allow for increased conjugation efficiency.</p> <p>This conjugation-ready format is designed for use with fluorochromes, metal isotopes, oligonucleotides, and enzymes, which makes them ideal for antibody labelling, functional and cell-based assays, flow-based assays (e.g. mass cytometry) and Multiplex Imaging applications.</p> <p>Use our conjugation kits for antibody conjugates that are ready-to-use in as little as 20 minutes with <1 minute hands-on-time and 100% antibody recovery: available for fluorescent dyes, HRP, biotin and gold.</p> <p>This product is compatible with the Maxpar[®] Antibody Labeling Kit from Fluidigm, without the need for antibody preparation. Maxpar[®] is a trademark of Fluidigm Canada Inc.</p> <p>This product is a recombinant monoclonal antibody, which offers several advantages including:</p> <ul style="list-style-type: none"> - High batch-to-batch consistency and reproducibility - Improved sensitivity and specificity - Long-term security of supply - Animal-free production <p>For more information see here.</p> <p>Our RabMAb[®] technology is a patented hybridoma-based technology for making rabbit monoclonal antibodies. For details on our patents, please refer to RabMAb[®] patents.</p> |

Properties

| | |
|----------------------|---|
| Form | Liquid |
| Storage instructions | Shipped at 4°C. Store at +4°C. Do Not Freeze. |
| Storage buffer | pH: 7.2 Constituent: PBS |
| Carrier free | Yes |
| Purity | Protein A purified |
| Clonality | Monoclonal |
| Clone number | EPR12464 |
| Isotype | IgG |

Applications

The Abpromise guarantee Our **Abpromise guarantee** covers the use of ab240202 in the following tested applications. The application notes include recommended starting dilutions; optimal dilutions/concentrations should be determined by the end user.

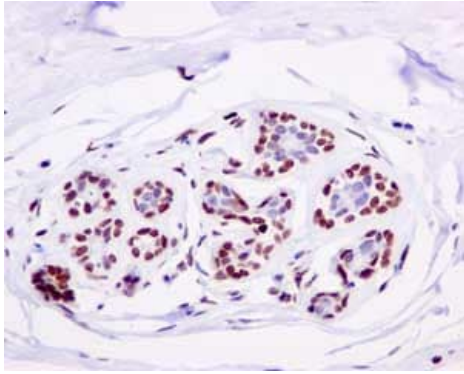
| Application | Abreviews | Notes |
|-------------|-----------|---|
| WB | | Use at an assay dependent concentration. Predicted molecular weight: 102 kDa. |
| ICC/IF | | Use at an assay dependent concentration. |
| IHC-P | | Use at an assay dependent concentration. Perform heat mediated antigen retrieval with citrate buffer pH 6 before commencing with IHC staining protocol. |

Application notes Is unsuitable for Flow Cyt or IP.

Target

| | |
|-----------------------|--|
| Function | DNA ligase that seals nicks in double-stranded DNA during DNA replication, DNA recombination and DNA repair. |
| Sequence similarities | Belongs to the ATP-dependent DNA ligase family. |
| Cellular localization | Nucleus. |

Images

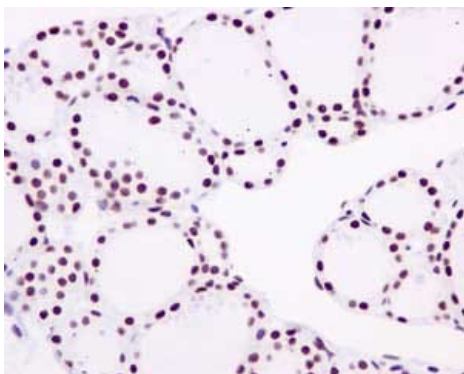


Immunohistochemistry (Formalin/PFA-fixed paraffin-embedded sections) - Anti-LIG1 antibody
[EPR12464] - BSA and Azide free (ab240202)

Immunohistochemical analysis of paraffin-embedded Human gastric carcinoma tissue labeling LIG1 with **ab177946** at 1/50 dilution.

This data was developed using the same antibody clone in a different buffer formulation containing PBS, BSA, glycerol, and sodium azide (**ab177946**).

Perform heat mediated antigen retrieval with citrate buffer pH 6 before commencing with IHC staining protocol.

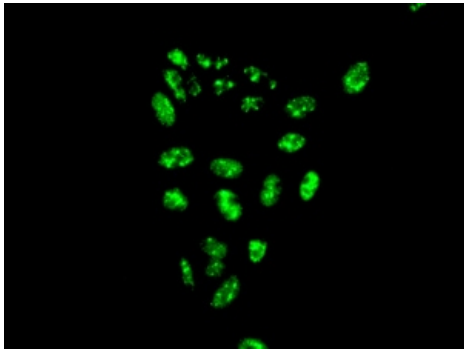


Immunohistochemistry (Formalin/PFA-fixed paraffin-embedded sections) - Anti-LIG1 antibody
[EPR12464] - BSA and Azide free (ab240202)

Immunohistochemical analysis of paraffin-embedded Human thyroid gland tissue labeling LIG1 with **ab177946** at 1/50 dilution.

This data was developed using the same antibody clone in a different buffer formulation containing PBS, BSA, glycerol, and sodium azide (**ab177946**).

Perform heat mediated antigen retrieval with citrate buffer pH 6 before commencing with IHC staining protocol.

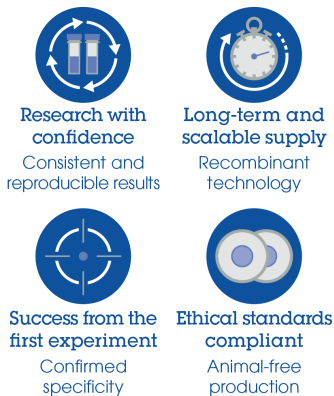


Immunocytochemistry/ Immunofluorescence - Anti-LIG1 antibody [EPR12464] - BSA and Azide free (ab240202)

Immunofluorescent analysis of HeLa cells labeling LIG1 with **ab177946** at 1/100 dilution.

This data was developed using the same antibody clone in a different buffer formulation containing PBS, BSA, glycerol, and sodium azide (**ab177946**).

Why choose a recombinant antibody?



Anti-LIG1 antibody [EPR12464] - BSA and Azide free (ab240202)

Please note: All products are "FOR RESEARCH USE ONLY. NOT FOR USE IN DIAGNOSTIC PROCEDURES"

Our Abpromise to you: Quality guaranteed and expert technical support

- Replacement or refund for products not performing as stated on the datasheet
- Valid for 12 months from date of delivery
- Response to your inquiry within 24 hours
- We provide support in Chinese, English, French, German, Japanese and Spanish
- Extensive multi-media technical resources to help you
- We investigate all quality concerns to ensure our products perform to the highest standards

If the product does not perform as described on this datasheet, we will offer a refund or replacement. For full details of the Abpromise, please visit <https://www.abcam.com/abpromise> or contact our technical team.

Terms and conditions

- Guarantee only valid for products bought direct from Abcam or one of our authorized distributors