




Product datasheet

Anti-LIGHT/TNFSF14 antibody ab233502

3 Images

Overview

Product name	Anti-LIGHT/TNFSF14 antibody
Description	Rabbit polyclonal to LIGHT/TNFSF14
Host species	Rabbit
Tested applications	Suitable for: WB, Sandwich ELISA
Species reactivity	Reacts with: Recombinant fragment Predicted to work with: Mouse 
Immunogen	Recombinant fragment corresponding to Mouse LIGHT/TNFSF14 aa 50 to the C-terminus. (E.coli derived). Database link: Q9QYH9  Run BLAST with  Run BLAST with
Positive control	WB: Recombinant mouse LIGHT/TNFSF14 protein.
General notes	<p>The Life Science industry has been in the grips of a reproducibility crisis for a number of years. Abcam is leading the way in addressing this with our range of recombinant monoclonal antibodies and knockout edited cell lines for gold-standard validation. Please check that this product meets your needs before purchasing.</p> <p>If you have any questions, special requirements or concerns, please send us an inquiry and/or contact our Support team ahead of purchase. Recommended alternatives for this product can be found below, along with publications, customer reviews and Q&As</p>

Properties

Form	Lyophilized:For lot specific reconstitution information please contact our Scientific Support Team.
Storage instructions	Shipped at 4°C. Store at +4°C short term (1-2 weeks). Upon delivery aliquot. Store at -20°C long term. Avoid freeze / thaw cycle.
Storage buffer	Constituent: PBS Sterile filtered
Purity	Immunogen affinity purified
Purification notes	ab233502 was purified by affinity chromatography employing an immobilized Murine LIGHT/TNFSF14 matrix.
Clonality	Polyclonal

Isotype

IgG

Applications

The Abpromise guarantee

Our **Abpromise guarantee** covers the use of ab233502 in the following tested applications.

The application notes include recommended starting dilutions; optimal dilutions/concentrations should be determined by the end user.

Application	Abreviews	Notes
WB		Use a concentration of 0.1 - 0.2 µg/ml. Predicted molecular weight: 26 kDa.
Sandwich ELISA		Use a concentration of 0.5 - 2 µg/ml.

Target

Function

Cytokine that binds to TNFRSF3/LTBR. Binding to the decoy receptor TNFRSF6B modulates its effects. Activates NFκB, stimulates the proliferation of T-cells, and inhibits growth of the adenocarcinoma HT-29. Acts as a receptor for Herpes simplex virus.

Tissue specificity

Predominantly expressed in the spleen but also found in the brain. Weakly expressed in peripheral lymphoid tissues and in heart, placenta, liver, lung, appendix, and kidney, and no expression seen in fetal tissues, endocrine glands, or nonhematopoietic tumor lines.

Sequence similarities

Belongs to the tumor necrosis factor family.

Post-translational modifications

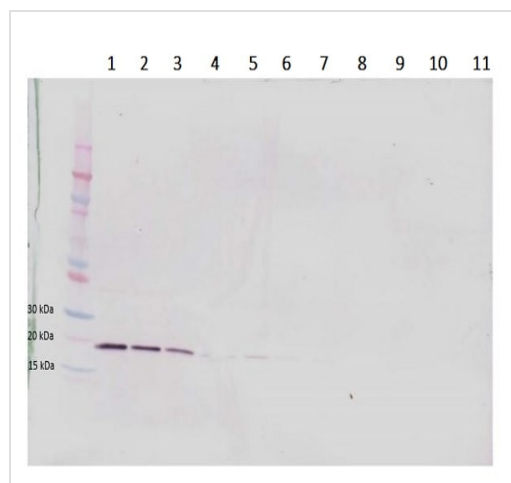
N-glycosylated.

The soluble form of isoform 1 derives from the membrane form by proteolytic processing.

Cellular localization

Cytoplasm; Secreted and Cell membrane.

Images



Western blot - Anti-LIGHT/TNFSF14 antibody (ab233502)

All lanes : Anti-LIGHT/TNFSF14 antibody (ab233502) at 0.2 µg/ml

Lane 1 : Recombinant mouse LIGHT/TNFSF14 protein, 250 ng

Lane 2 : Recombinant mouse LIGHT/TNFSF14 protein, 125 ng

Lane 3 : Recombinant mouse LIGHT/TNFSF14 protein, 62.5 ng

Lane 4 : Recombinant mouse LIGHT/TNFSF14 protein, 31.25 ng

Lane 5 : Recombinant mouse LIGHT/TNFSF14 protein, 15.625 ng

Lane 6 : Recombinant mouse LIGHT/TNFSF14 protein, 7.8 ng

Lane 7 : Recombinant mouse LIGHT/TNFSF14 protein, 3.9 ng

Lane 8 : Recombinant mouse LIGHT/TNFSF14 protein, 1.95 ng

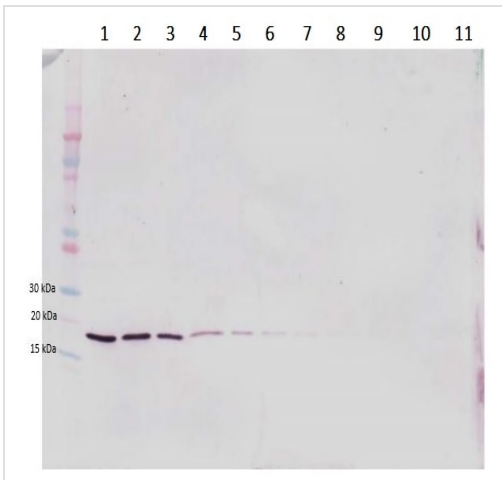
Lane 9 : Recombinant mouse LIGHT/TNFSF14 protein, 0.975 ng

Lane 10 : Recombinant mouse LIGHT/TNFSF14 protein, 0.49 ng

Lane 11 : Recombinant mouse LIGHT/TNFSF14 protein, 0.24 ng

Predicted band size: 26 kDa

Reducing conditions.



Western blot - Anti-LIGHT/TNFSF14 antibody (ab233502)

All lanes : Anti-LIGHT/TNFSF14 antibody (ab233502) at 0.1 µg/ml

Lane 1 : Recombinant mouse LIGHT/TNFSF14 protein, 250 ng

Lane 2 : Recombinant mouse LIGHT/TNFSF14 protein, 125 ng

Lane 3 : Recombinant mouse LIGHT/TNFSF14 protein, 62.5 ng

Lane 4 : Recombinant mouse LIGHT/TNFSF14 protein, 31.25 ng

Lane 5 : Recombinant mouse LIGHT/TNFSF14 protein, 15.625 ng

Lane 6 : Recombinant mouse LIGHT/TNFSF14 protein, 7.8 ng

Lane 7 : Recombinant mouse LIGHT/TNFSF14 protein, 3.9 ng

Lane 8 : Recombinant mouse LIGHT/TNFSF14 protein, 1.95 ng

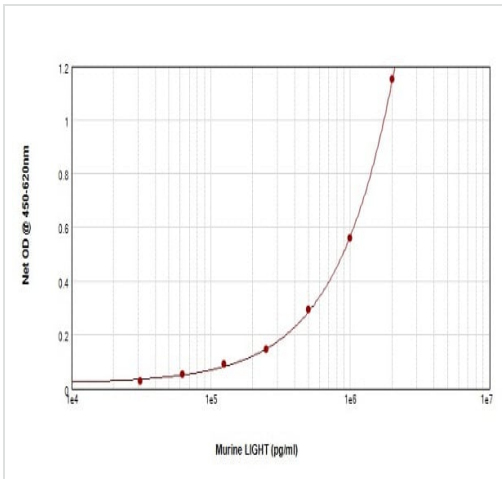
Lane 9 : Recombinant mouse LIGHT/TNFSF14 protein, 0.98 ng

Lane 10 : Recombinant mouse LIGHT/TNFSF14 protein, 0.49 ng

Lane 11 : Recombinant mouse LIGHT/TNFSF14 protein, 0.24 ng

Predicted band size: 26 kDa

Non-reducing conditions..



Sandwich ELISA - Anti-LIGHT/TNFSF14 antibody (ab233502)

ab233502, in conjunction a Biotinylated Anti-Murine

LIGHT/TNFSF14 as a detection antibody, allows the detection of at least 2000-4000 pg/ml of Recombinant Murine LIGHT/TNFSF14.

Please note: All products are "FOR RESEARCH USE ONLY. NOT FOR USE IN DIAGNOSTIC PROCEDURES"

Our Abpromise to you: Quality guaranteed and expert technical support

- Replacement or refund for products not performing as stated on the datasheet
- Valid for 12 months from date of delivery
- Response to your inquiry within 24 hours

- We provide support in Chinese, English, French, German, Japanese and Spanish
- Extensive multi-media technical resources to help you
- We investigate all quality concerns to ensure our products perform to the highest standards

If the product does not perform as described on this datasheet, we will offer a refund or replacement. For full details of the Abpromise, please visit <https://www.abcam.com/abpromise> or contact our technical team.

Terms and conditions

- Guarantee only valid for products bought direct from Abcam or one of our authorized distributors