

Product datasheet

Anti-LIM2 antibody [EPR16947] ab198502

Recombinant RabMAb

3 Images

Overview

Product name	Anti-LIM2 antibody [EPR16947]
Description	Rabbit monoclonal [EPR16947] to LIM2
Host species	Rabbit
Tested applications	Suitable for: WB
Species reactivity	Reacts with: Mouse, Rat
Immunogen	Synthetic peptide. This information is proprietary to Abcam and/or its suppliers.
Positive control	Mouse and Rat eyeball lysates.
General notes	<p>This product is a recombinant monoclonal antibody, which offers several advantages including:</p> <ul style="list-style-type: none"> - High batch-to-batch consistency and reproducibility - Improved sensitivity and specificity - Long-term security of supply - Animal-free production <p>For more information see here.</p> <p>Our RabMAb[®] technology is a patented hybridoma-based technology for making rabbit monoclonal antibodies. For details on our patents, please refer to RabMAb[®] patents.</p>

Properties

Form	Liquid
Storage instructions	Shipped at 4°C. Store at +4°C short term (1-2 weeks). Upon delivery aliquot. Store at -20°C long term. Avoid freeze / thaw cycle.
Storage buffer	<p>pH: 7.2</p> <p>Preservative: 0.01% Sodium azide</p> <p>Constituents: 40% Glycerol (glycerin, glycerine), 0.05% BSA, 59% PBS</p>
Purity	Protein A purified
Clonality	Monoclonal
Clone number	EPR16947
Isotype	IgG

Applications

The Abpromise guarantee

Our **Abpromise guarantee** covers the use of ab198502 in the following tested applications.

The application notes include recommended starting dilutions; optimal dilutions/concentrations should be determined by the end user.

Application	Abreviews	Notes
WB		1/5000. Detects a band of approximately 20 kDa (predicted molecular weight: 20 kDa).

Target

Function

Present in the thicker 16-17 nm junctions of mammalian lens fiber cells, where it may contribute to cell junctional organization. Acts as a receptor for calmodulin. May play an important role in both lens development and cataractogenesis.

Tissue specificity

Eye lens specific.

Involvement in disease

Cataract, multiple types 19

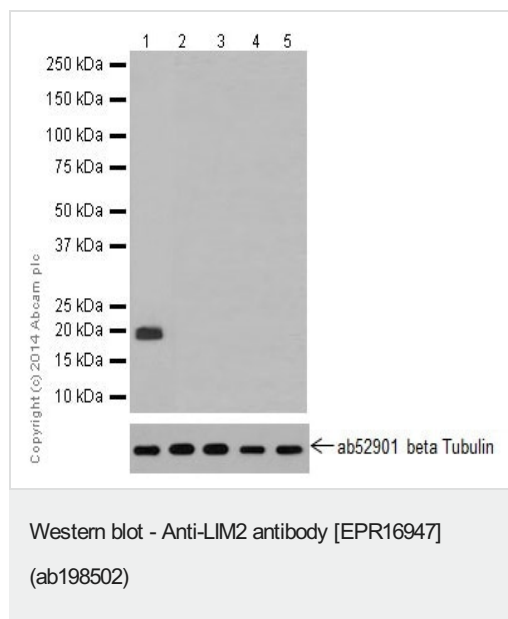
Sequence similarities

Belongs to the PMP-22/EMP/MP20 family.

Cellular localization

Membrane.

Images



All lanes : Anti-LIM2 antibody [EPR16947] (ab198502) at 1/50000 dilution

Lane 1 : Mouse eyeball tissue lysate

Lane 2 : Mouse brain tissue lysate

Lane 3 : Mouse heart tissue lysate

Lane 4 : Mouse kidney tissue lysate

Lane 5 : Mouse spleen tissue lysate

Lysates/proteins at 10 µg per lane.

Secondary

All lanes : Peroxidase-conjugated goat anti-rabbit IgG (H+L) at 1/1000 dilution

Developed using the ECL technique.

Predicted band size: 20 kDa

Observed band size: 20 kDa

Exposure time: 30 seconds

Blocking and dilution buffer: 5% NFDM/TBST.

All lanes : Anti-LIM2 antibody [EPR16947] (ab198502) at 1/5000 dilution

Lane 1 : Rat eyeball tissue lysate

Lane 2 : Rat brain tissue lysate

Lane 3 : Rat heart tissue lysate

Lane 4 : Rat kidney tissue lysate

Lane 5 : Rat spleen tissue lysate

Lysates/proteins at 10 µg per lane.

Secondary

All lanes : Peroxidase-conjugated goat anti-rabbit IgG (H+L) at 1/1000 dilution

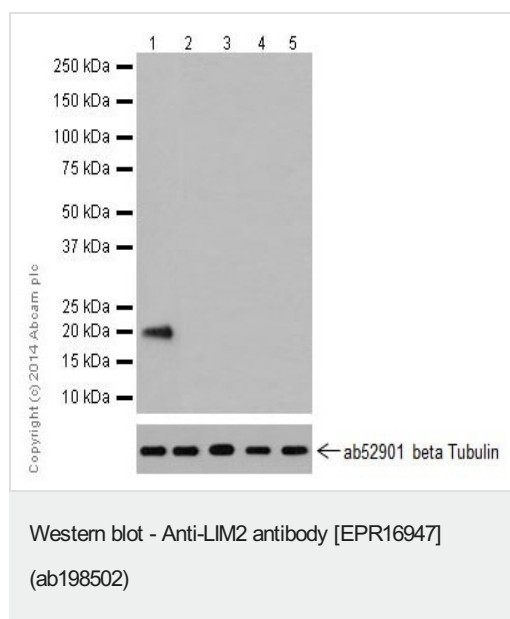
Developed using the ECL technique.

Predicted band size: 20 kDa





Observed band size: 20 kDa

Exposure time: 3 minutes

Blocking and dilution buffer: 5% NFDM/TBST.



Why choose a recombinant antibody?

 <p>Research with confidence Consistent and reproducible results</p>	 <p>Long-term and scalable supply Recombinant technology</p>
 <p>Success from the first experiment Confirmed specificity</p>	 <p>Ethical standards compliant Animal-free production</p>

Anti-LIM2 antibody [EPR16947] (ab198502)

Please note: All products are "FOR RESEARCH USE ONLY. NOT FOR USE IN DIAGNOSTIC PROCEDURES"

Our Abpromise to you: Quality guaranteed and expert technical support

- Replacement or refund for products not performing as stated on the datasheet
- Valid for 12 months from date of delivery
- Response to your inquiry within 24 hours

- We provide support in Chinese, English, French, German, Japanese and Spanish
- Extensive multi-media technical resources to help you
- We investigate all quality concerns to ensure our products perform to the highest standards

If the product does not perform as described on this datasheet, we will offer a refund or replacement. For full details of the Abpromise, please visit <https://www.abcam.com/abpromise> or contact our technical team.

Terms and conditions

- Guarantee only valid for products bought direct from Abcam or one of our authorized distributors