


Product datasheet

Anti-LIMK2 antibody [EP969Y] - C-terminal ab45165

KO VALIDATED Recombinant RabMAB

★ ★ ★ ☆ ☆ [2 Abreviews](#) [8 References](#) [5 Images](#)

Overview

Product name	Anti-LIMK2 antibody [EP969Y] - C-terminal
Description	Rabbit monoclonal [EP969Y] to LIMK2 - C-terminal
Host species	Rabbit
Tested applications	Suitable for: IHC-P, ICC/IF, WB
Species reactivity	Reacts with: Human Predicted to work with: Mouse, Rat 
Immunogen	Synthetic peptide. This information is proprietary to Abcam and/or its suppliers.
Positive control	WB: Wild-type HAP1 cell lysate. Jurkat cell lysate. Ramos membrane lysate. IHC-P: Human endometrium carcinoma tissue. ICC/IF: Ramos cells.
General notes	Our RabMAB [®] technology is a patented hybridoma-based technology for making rabbit monoclonal antibodies. For details on our patents, please refer to RabMAB[®] patents .

Properties

Form	Liquid
Storage instructions	Shipped at 4°C. Upon delivery aliquot and store at -20°C. Avoid freeze / thaw cycles.
Storage buffer	pH: 7.20 Preservative: 0.01% Sodium azide Constituents: PBS, 40% Glycerol (glycerin, glycerine), 0.5% BSA
Purity	Protein A purified
Clonality	Monoclonal
Clone number	EP969Y
Isotype	IgG

Applications

The Abpromise guarantee Our [Abpromise guarantee](#) covers the use of ab45165 in the following tested applications. The application notes include recommended starting dilutions; optimal dilutions/concentrations should be determined by the end user.

Application	Abreviews	Notes
IHC-P	★☆☆☆☆ (1)	1/250. Perform heat mediated antigen retrieval before commencing with IHC staining protocol.
ICC/IF		1/50 - 1/100.
WB	★★★★★ (1)	1/2000. Predicted molecular weight: 72 kDa.

Target

Function

Displays serine/threonine-specific phosphorylation of myelin basic protein and histone (MBP) in vitro.

Tissue specificity

Highest expression in the placenta; moderate level in liver, lung, kidney, and pancreas. LIMK2a is found to be more abundant than LIMK2b in liver, colon, stomach, and spleen, while in brain, kidney, and placenta LIMK2b is the dominant form. In adult lung, both LIMK2a and LIMK2b is nearly equally observed.

Sequence similarities

Belongs to the protein kinase superfamily. TKL Ser/Thr protein kinase family.
 Contains 2 LIM zinc-binding domains.
 Contains 1 PDZ (DHR) domain.
 Contains 1 protein kinase domain.

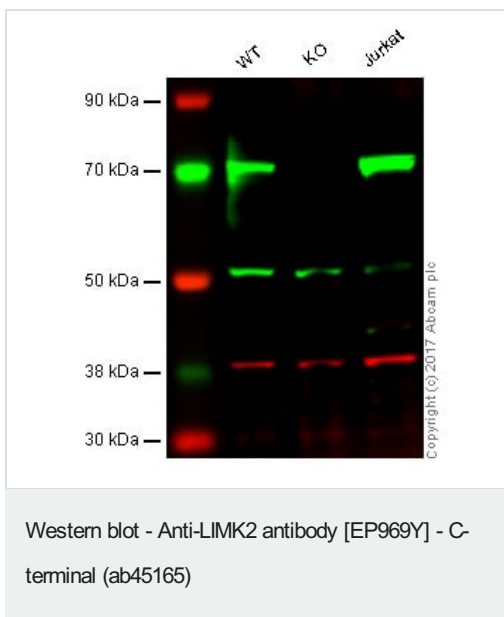
Post-translational modifications

Phosphorylated on serine and/or threonine residues by ROCK1.

Cellular localization

Cytoplasm. Nucleus. Isoform LIMK2a is distributed in the cytoplasm and the nucleus and Cytoplasm. Nucleus. Isoform LIMK2b occurs mainly in the cytoplasm and is scarcely translocated to the nucleus.

Images



Lane 1: Wild-type HAP1 whole cell lysate (40 µg)

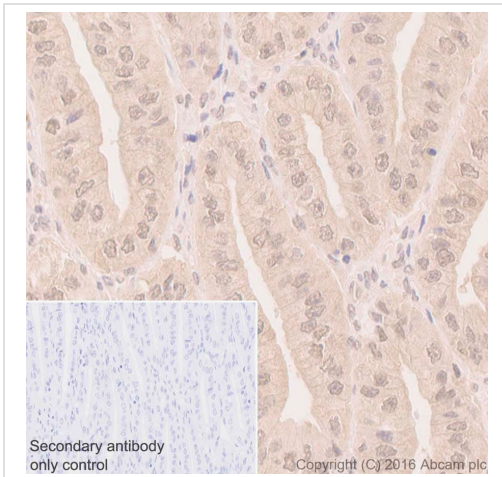
Lane 2: LIMK2 (LIMK2) knockout HAP1 whole cell lysate (40 µg)

Lane 3: Jurkat whole cell lysate (40 µg)

Lanes 1 - 3: Merged signal (red and green). Green - ab45165 observed at 72 kDa. Red - loading control, **ab9484**, observed at 37 kDa.

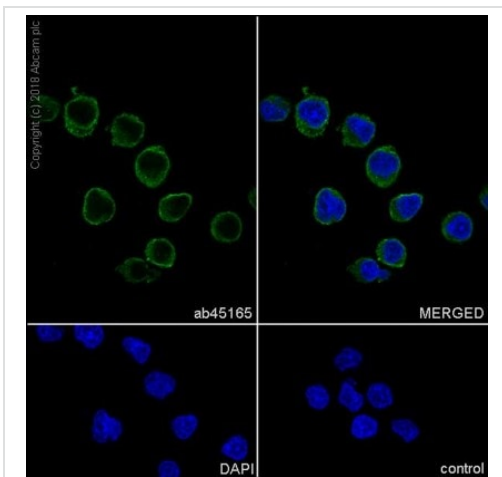
ab45165 was shown to specifically recognize LIMK2 (LIMK2) in wild-type HAP1 cells along with additional cross-reactive bands. No band was observed with knockout cells were examined. Wild-type and LIMK2 (LIMK2) knockout samples were subjected to SDS-PAGE. Ab45165 and **ab9484** (Mouse anti GAPDH loading control) were incubated overnight at 4°C at 1/2000 dilution and 1/20,000 dilution respectively. Blots were developed with Goat anti-Rabbit IgG H&L (IRDye® 800CW) preabsorbed (**ab216773**) and Goat anti-Mouse IgG H&L (IRDye® 680RD) preabsorbed (**ab216776**)

secondary antibodies at 1/20,000 dilution for 1 hour at room temperature before imaging.



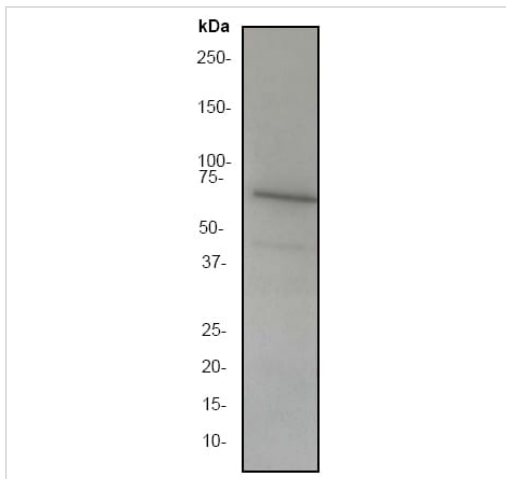
Immunohistochemistry (Formalin/PFA-fixed paraffin-embedded sections) analysis of human endometrium cancer tissue labeling LIMK2 with ab45165 at 1/250 dilution. Heat mediated antigen retrieval was performed using Tris/EDTA buffer pH 9. **ab97051**, a HRP-conjugated goat anti-rabbit IgG (H+L) was used as the secondary antibody (1/500). Negative control using PBS instead of primary antibody. Counterstained with hematoxylin.

Immunohistochemistry (Formalin/PFA-fixed paraffin-embedded sections) - Anti-LIMK2 antibody [EP969Y] - C-terminal (ab45165)



Immunocytochemistry/ Immunofluorescence analysis of Ramos cells labeling LIMK2 with ab45165 at 1/250. Goat anti rabbit IgG(Alexa Fluor® 488); **ab150077** at 1/1000 dilution was used as the secondary antibody. Cells were fixed with 4% paraformaldehyde and permeabilised with 0.1% tritonX-100. DAPI (blue) was used as a nuclear counterstain.

Immunocytochemistry/ Immunofluorescence - Anti-LIMK2 antibody [EP969Y] - C-terminal (ab45165)







Anti-LIMK2 antibody [EP969Y] - C-terminal (ab45165) at 1/2000 dilution + Ramos (Human Burkitt's lymphoma cell line) membrane lysate

Predicted band size: 72 kDa

Observed band size: 70 kDa

Western blot - Anti-LIMK2 antibody [EP969Y] - C-terminal (ab45165)

Why choose a recombinant antibody?

 Research with confidence Consistent and reproducible results	 Long-term and scalable supply Recombinant technology
 Success from the first experiment Confirmed specificity	 Ethical standards compliant Animal-free production

Anti-LIMK2 antibody [EP969Y] - C-terminal (ab45165)

Please note: All products are "FOR RESEARCH USE ONLY. NOT FOR USE IN DIAGNOSTIC PROCEDURES"

Our Abpromise to you: Quality guaranteed and expert technical support

- Replacement or refund for products not performing as stated on the datasheet
- Valid for 12 months from date of delivery
- Response to your inquiry within 24 hours
- We provide support in Chinese, English, French, German, Japanese and Spanish
- Extensive multi-media technical resources to help you
- We investigate all quality concerns to ensure our products perform to the highest standards

If the product does not perform as described on this datasheet, we will offer a refund or replacement. For full details of the Abpromise, please visit <https://www.abcam.com/abpromise> or contact our technical team.

Terms and conditions

- Guarantee only valid for products bought direct from Abcam or one of our authorized distributors