


Product datasheet

Anti-LIN7 antibody ab127049

3 Images

Overview

Product name	Anti-LIN7 antibody
Description	Rabbit polyclonal to LIN7
Host species	Rabbit
Tested applications	Suitable for: WB, IHC-P, ICC/IF
Species reactivity	Reacts with: Human Predicted to work with: Mouse, Rat, Cow, Zebrafish 
Immunogen	Recombinant fragment, corresponding to a region within amino acids 1-187 of Human LIN7 (UniProt O14910).
Positive control	NT2D1, IMR32, U87-MG and MCF7 whole cell lysate, MCF7 cells, Human colon carcinoma tissue
General notes	<p>The Life Science industry has been in the grips of a reproducibility crisis for a number of years. Abcam is leading the way in addressing this with our range of recombinant monoclonal antibodies and knockout edited cell lines for gold-standard validation. Please check that this product meets your needs before purchasing.</p> <p>If you have any questions, special requirements or concerns, please send us an inquiry and/or contact our Support team ahead of purchase. Recommended alternatives for this product can be found below, along with publications, customer reviews and Q&As</p>

Properties

Form	Liquid
Storage instructions	Shipped at 4°C. Upon delivery aliquot. Store at -20°C or -80°C. Avoid freeze / thaw cycle.
Storage buffer	pH: 7.00 Preservative: 0.01% Thimerosal (merthiolate) Constituents: 78.99% PBS, 1% BSA, 20% Glycerol (glycerin, glycerine)
Purity	Immunogen affinity purified
Clonality	Polyclonal
Isotype	IgG

Applications

The Abpromise guarantee

Our **Abpromise guarantee** covers the use of ab127049 in the following tested applications.

The application notes include recommended starting dilutions; optimal dilutions/concentrations should be determined by the end user.

Application	Abreviews	Notes
WB		1/1000 - 1/10000. Predicted molecular weight: 22 kDa.
IHC-P		1/100 - 1/500. Perform heat mediated antigen retrieval with citrate buffer pH 6 before commencing with IHC staining protocol.
ICC/IF		1/100 - 1/500.

Target**Function**

Plays a role in establishing and maintaining the asymmetric distribution of channels and receptors at the plasma membrane of polarized cells. Forms membrane-associated multiprotein complexes that may regulate delivery and recycling of proteins to the correct membrane domains. The tripartite complex composed of LIN7 (LIN7A, LIN7B or LIN7C), CASK and APBA1 may have the potential to couple synaptic vesicle exocytosis to cell adhesion in brain. Ensures the proper localization of GRIN2B (subunit 2B of the NMDA receptor) to neuronal postsynaptic density and may function in localizing synaptic vesicles at synapses where it is recruited by beta-catenin and cadherin. Required to localize Kir2 channels, GABA transporter (SLC6A12) and EGFR/ERBB1, ERBB2, ERBB3 and ERBB4 to the basolateral membrane of epithelial cells.

Sequence similarities

Belongs to the lin-7 family.
Contains 1 L27 domain.
Contains 1 PDZ (DHR) domain.

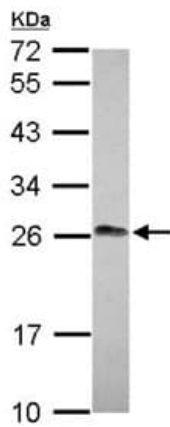
Domain

The kinase interacting site is required for proper delivery of ERBB2 to the basolateral membrane. The PDZ domain regulates endocytosis and recycling of the receptor at the membrane. The L27 domain mediates interaction with CASK and is involved in the formation of multimeric complexes and the association of LIN7 to membranes.

Cellular localization

Cell membrane. Basolateral cell membrane. Cell junction. Cell junction > synapse > postsynaptic cell membrane > postsynaptic density. Cell junction > tight junction. Cell junction > synapse > synaptosome. Enriched in synaptosomes and at epithelial cell-cell junctions (By similarity). Mainly basolateral in renal epithelial cells.

Images

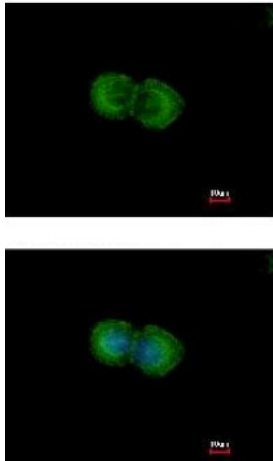


Western blot - Anti-LIN7 antibody (ab127049)

Anti-LIN7 antibody (ab127049) at 1/5000 dilution + MCF7 whole cell lysate at 30 μ g

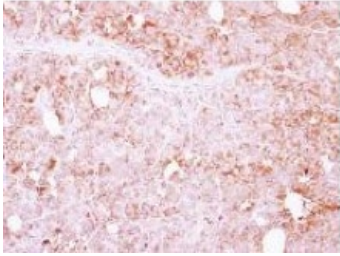
Predicted band size: 22 kDa

12% SDS PAGE



Immunocytochemistry/ Immunofluorescence - Anti-LIN7 antibody (ab127049)

ab127049, at a dilution of 1/500, staining LIN7 in methanol-fixed MCF7 cells by Immunofluorescence. Lower image has been costained with Hoechst 33342.



ab127049, at a dilution of 1/250, staining LIN7 in paraffin-embedded Human colon carcinoma tissue by Immunohistochemistry.

Immunohistochemistry (Formalin/PFA-fixed paraffin-embedded sections) - Anti-LIN7 antibody (ab127049)

Please note: All products are "FOR RESEARCH USE ONLY. NOT FOR USE IN DIAGNOSTIC PROCEDURES"

Our Abpromise to you: Quality guaranteed and expert technical support

- Replacement or refund for products not performing as stated on the datasheet
- Valid for 12 months from date of delivery
- Response to your inquiry within 24 hours
- We provide support in Chinese, English, French, German, Japanese and Spanish
- Extensive multi-media technical resources to help you
- We investigate all quality concerns to ensure our products perform to the highest standards

If the product does not perform as described on this datasheet, we will offer a refund or replacement. For full details of the Abpromise, please visit <https://www.abcam.com/abpromise> or contact our technical team.

Terms and conditions

- Guarantee only valid for products bought direct from Abcam or one of our authorized distributors