

Product datasheet

Anti-LIPG antibody ab24447

★ ★ ★ ★ ★ [1 Abreviews](#) [3 References](#) [1 Image](#)

Overview

Product name	Anti-LIPG antibody
Description	Rabbit polyclonal to LIPG
Host species	Rabbit
Specificity	ab24447 reacts with Endothelial lipase.
Tested applications	Suitable for: WB
Species reactivity	Reacts with: Human
Immunogen	Synthetic peptide surrounding amino acid 22 of human Endothelial Lipase. (Peptide available as ab53323 .)
General notes	<p>This product is manufactured by BioVision, an Abcam company and was previously called 3657 Endothelial Lipase Antibody. 3657-100 is the same size as the 100 µg size of ab24447.</p> <p>The Life Science industry has been in the grips of a reproducibility crisis for a number of years. Abcam is leading the way in addressing this with our range of recombinant monoclonal antibodies and knockout edited cell lines for gold-standard validation. Please check that this product meets your needs before purchasing.</p> <p>If you have any questions, special requirements or concerns, please send us an inquiry and/or contact our Support team ahead of purchase. Recommended alternatives for this product can be found below, along with publications, customer reviews and Q&As</p>

Properties

Form	Liquid
Storage instructions	Shipped at 4°C. Upon delivery aliquot and store at -20°C. Avoid freeze / thaw cycles.
Storage buffer	Preservative: 0.02% Sodium azide Constituents: PBS, 50% Glycerol (glycerin, glycerine), 1% BSA
Purity	Immunogen affinity purified
Clonality	Polyclonal
Isotype	IgG

Applications

The Abpromise guarantee

Our **Abpromise guarantee** covers the use of ab24447 in the following tested applications.

The application notes include recommended starting dilutions; optimal dilutions/concentrations should be determined by the end user.

Application	Abreviews	Notes
WB		Use a concentration of 1 - 4 µg/ml. Detects a band of approximately 57 kDa.

Target

Function

Has phospholipase and triglyceride lipase activities. Hydrolyzes high density lipoproteins (HDL) more efficiently than other lipoproteins. Binds heparin.

Tissue specificity

High level of expression in the liver, placenta, lung, thyroid, kidney, testis and in the corpus luteum of the ovary. Expressed also in coronary artery endothelial cells, umbilical vein endothelial cells and in hepatocyte and osteosarcoma cell lines. Not detected in heart, brain and muscle.

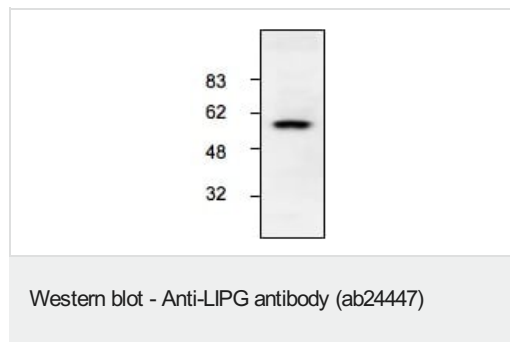
Sequence similarities

Belongs to the AB hydrolase superfamily. Lipase family.
Contains 1 PLAT domain.

Cellular localization

Secreted.

Images



Anti-LIPG antibody (ab24447) + HepG2 lysate

Observed band size: 57 kDa

Use ab24447 at 1-4µg/ml.

Please note: All products are "FOR RESEARCH USE ONLY. NOT FOR USE IN DIAGNOSTIC PROCEDURES"

Our Abpromise to you: Quality guaranteed and expert technical support

- Replacement or refund for products not performing as stated on the datasheet
- Valid for 12 months from date of delivery
- Response to your inquiry within 24 hours
- We provide support in Chinese, English, French, German, Japanese and Spanish
- Extensive multi-media technical resources to help you
- We investigate all quality concerns to ensure our products perform to the highest standards

If the product does not perform as described on this datasheet, we will offer a refund or replacement. For full details of the Abpromise, please visit <https://www.abcam.com/abpromise> or contact our technical team.

Terms and conditions

- Guarantee only valid for products bought direct from Abcam or one of our authorized distributors