

Product datasheet

Anti-Lipin 2/LPIN2 antibody ab63928

[2 References](#) [1 Image](#)

Overview

Product name	Anti-Lipin 2/LPIN2 antibody
Description	Rabbit polyclonal to Lipin 2/LPIN2
Host species	Rabbit
Tested applications	Suitable for: WB
Species reactivity	Reacts with: Mouse, Human
Immunogen	Synthetic peptide corresponding to Mouse Lipin 2/LPIN2.
Positive control	Jurkat cell and Mouse tissue lysates.
General notes	<p>This product is manufactured by BioVision, an Abcam company and was previously called 3832 Lipin 2 Antibody. 3832-100 is the same size as the 100 µg size of ab63928.</p> <p>The Life Science industry has been in the grips of a reproducibility crisis for a number of years. Abcam is leading the way in addressing this with our range of recombinant monoclonal antibodies and knockout edited cell lines for gold-standard validation. Please check that this product meets your needs before purchasing.</p> <p>If you have any questions, special requirements or concerns, please send us an inquiry and/or contact our Support team ahead of purchase. Recommended alternatives for this product can be found below, along with publications, customer reviews and Q&As</p>

Properties

Form	Liquid
Storage instructions	Shipped at 4°C. Upon delivery aliquot and store at -20°C. Avoid freeze / thaw cycles.
Storage buffer	<p>pH: 7.2</p> <p>Preservative: 0.01% Thimerosal (merthiolate)</p> <p>Constituents: PBS, 30% Glycerol (glycerin, glycerine), 0.5% BSA</p>
Purity	Immunogen affinity purified
Clonality	Polyclonal
Isotype	IgG

Applications

The Abpromise guarantee

Our **Abpromise guarantee** covers the use of ab63928 in the following tested applications.

The application notes include recommended starting dilutions; optimal dilutions/concentrations should be determined by the end user.

Application	Abreviews	Notes
WB		Use a concentration of 0.5 - 4 µg/ml. Detects a band of approximately 99 kDa (predicted molecular weight: 99 kDa).

Target

Function

Plays important roles in controlling the metabolism of fatty acids at different levels. Acts as a magnesium-dependent phosphatidate phosphatase enzyme which catalyzes the conversion of phosphatidic acid to diacylglycerol during triglyceride, phosphatidylcholine and phosphatidylethanolamine biosynthesis in the reticulum endoplasmic membrane. Acts also as a nuclear transcriptional coactivator for PPARGC1A to modulate lipid metabolism.

Tissue specificity

Expressed in liver, lung, kidney, placenta, spleen, thymus, lymph node, prostate, testes, small intestine, and colon.

Involvement in disease

Defects in LPIN2 are the cause of Majeed syndrome (MAJEEDS) [MIM:609628]. An autosomal recessive syndrome characterized by chronic recurrent multifocal osteomyelitis that is of early onset with a lifelong course, congenital dyserythropoietic anemia that presents as hypochromic, microcytic anemia during the first year of life and ranges from mild to transfusion-dependent, and transient inflammatory dermatosis, often manifesting as Sweet syndrome (neutrophilic skin infiltration).

Sequence similarities

Belongs to the lipin family.

Domain

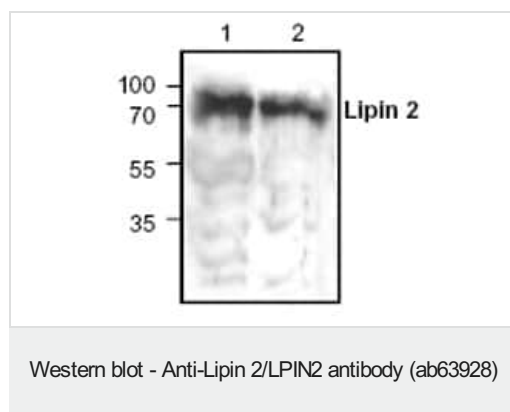
Contains 1 Asp-Xaa-Asp-Xaa-Thr (DXDXT) motif, a catalytic motif known to be essential for phosphatidate phosphatase activity.

Contains one Leu-Xaa-Xaa-Ile-Leu (LXXIL) motif, a motif known to be a transcriptional binding motif.

Cellular localization

Nucleus. Cytoplasm > cytosol. Endoplasmic reticulum membrane. Translocates to endoplasmic reticulum membrane with increasing levels of oleate.

Images



All lanes : Anti-Lipin 2/LPIN2 antibody (ab63928) at 0.5 µg/ml

Lane 1 : Jurkat cell lysate

Lane 2 : Mouse tissue lysate

Predicted band size: 99 kDa

Observed band size: 99 kDa

Please note: All products are "FOR RESEARCH USE ONLY. NOT FOR USE IN DIAGNOSTIC PROCEDURES"

Our Abpromise to you: Quality guaranteed and expert technical support

- Replacement or refund for products not performing as stated on the datasheet
- Valid for 12 months from date of delivery
- Response to your inquiry within 24 hours

- We provide support in Chinese, English, French, German, Japanese and Spanish
- Extensive multi-media technical resources to help you
- We investigate all quality concerns to ensure our products perform to the highest standards

If the product does not perform as described on this datasheet, we will offer a refund or replacement. For full details of the Abpromise, please visit <https://www.abcam.com/abpromise> or contact our technical team.

Terms and conditions

- Guarantee only valid for products bought direct from Abcam or one of our authorized distributors