


Product datasheet

Anti-Lipin 2/LPIN2 antibody [EPR12479] ab176347

Recombinant RabMAb

[3 References](#) [3 Images](#)

Overview

Product name	Anti-Lipin 2/LPIN2 antibody [EPR12479]
Description	Rabbit monoclonal [EPR12479] to Lipin 2/LPIN2
Host species	Rabbit
Tested applications	Suitable for: Flow Cyt (Intra), WB Unsuitable for: ICC/IF, IHC-P or IP
Species reactivity	Reacts with: Human Predicted to work with: Mouse, Rat 
Immunogen	Synthetic peptide within Human Lipin 2/LPIN2 aa 850 to the C-terminus (C terminal). The exact sequence is proprietary. Database link: Q92539
Positive control	WB: Jurkat, HepG2, 293T and HeLa whole cell lysate (ab150035). Flow Cyt (intra): Jurkat cells.
General notes	This product is a recombinant monoclonal antibody, which offers several advantages including: <ul style="list-style-type: none"> - High batch-to-batch consistency and reproducibility - Improved sensitivity and specificity - Long-term security of supply - Animal-free production For more information see here . Our RabMAb [®] technology is a patented hybridoma-based technology for making rabbit monoclonal antibodies. For details on our patents, please refer to RabMAb[®] patents .

Properties

Form	Liquid
Storage instructions	Shipped at 4°C. Store at +4°C short term (1-2 weeks). Upon delivery aliquot. Store at -20°C long term. Avoid freeze / thaw cycle.
Storage buffer	pH: 7.20 Preservative: 0.01% Sodium azide Constituents: 9% PBS, 40% Glycerol (glycerin, glycerine), 0.05% BSA, 50% Tissue culture supernatant
Purity	Tissue culture supernatant

Clonality	Monoclonal
Clone number	EPR12479
Isotype	IgG

Applications

The Abpromise guarantee Our **Abpromise guarantee** covers the use of ab176347 in the following tested applications. The application notes include recommended starting dilutions; optimal dilutions/concentrations should be determined by the end user.

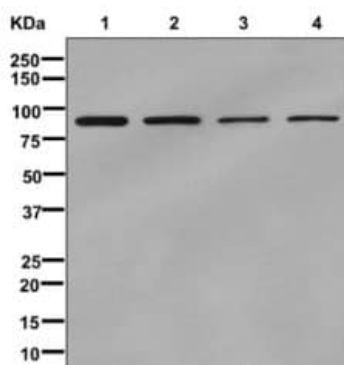
Application	Abreviews	Notes
Flow Cyt (Intra)		1/10 - 1/100. ab172730 - Rabbit monoclonal IgG, is suitable for use as an isotype control with this antibody.
WB		1/1000 - 1/10000. Predicted molecular weight: 99 kDa.

Application notes Is unsuitable for ICC/IF, IHC-P or IP.

Target

Function	Plays important roles in controlling the metabolism of fatty acids at different levels. Acts as a magnesium-dependent phosphatidate phosphatase enzyme which catalyzes the conversion of phosphatidic acid to diacylglycerol during triglyceride, phosphatidylcholine and phosphatidylethanolamine biosynthesis in the reticulum endoplasmic membrane. Acts also as a nuclear transcriptional coactivator for PPARGC1A to modulate lipid metabolism.
Tissue specificity	Expressed in liver, lung, kidney, placenta, spleen, thymus, lymph node, prostate, testes, small intestine, and colon.
Involvement in disease	Defects in LPIN2 are the cause of Majeed syndrome (MAJEEDS) [MIM:609628]. An autosomal recessive syndrome characterized by chronic recurrent multifocal osteomyelitis that is of early onset with a lifelong course, congenital dyserythropoietic anemia that presents as hypochromic, microcytic anemia during the first year of life and ranges from mild to transfusion-dependent, and transient inflammatory dermatosis, often manifesting as Sweet syndrome (neutrophilic skin infiltration).
Sequence similarities	Belongs to the lipin family.
Domain	Contains 1 Asp-Xaa-Asp-Xaa-Thr (DXDXT) motif, a catalytic motif known to be essential for phosphatidate phosphatase activity. Contains one Leu-Xaa-Xaa-Ile-Leu (LXXIL) motif, a motif known to be a transcriptional binding motif.
Cellular localization	Nucleus. Cytoplasm > cytosol. Endoplasmic reticulum membrane. Translocates to endoplasmic reticulum membrane with increasing levels of oleate.

Images



Western blot - Anti-Lipin 2/LPIN2 antibody [EPR12479] (ab176347)

All lanes : Anti-Lipin 2/LPIN2 antibody [EPR12479] (ab176347) at 1/1000 dilution

Lane 1 : Jurkat cell lysate

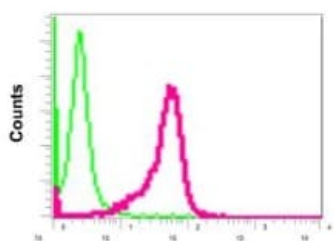
Lane 2 : HepG2 cell lysate

Lane 3 : 293T cell lysate

Lane 4 : HeLa cell lysate

Lysates/proteins at 10 µg per lane.

Predicted band size: 99 kDa



Flow Cytometry (Intracellular) - Anti-Lipin 2/LPIN2 antibody [EPR12479] (ab176347)

Intracellular flow cytometric analysis of permeabilized Jurkat cells labeling Lipin 2/LPIN2 with ab176347 at 1/10 dilution (red) or a rabbit IgG (negative) (green).

Why choose a recombinant antibody?



Research with confidence
Consistent and reproducible results



Long-term and scalable supply
Recombinant technology



Success from the first experiment
Confirmed specificity



Ethical standards compliant
Animal-free production

Anti-Lipin 2/LPIN2 antibody [EPR12479] (ab176347)

Please note: All products are "FOR RESEARCH USE ONLY. NOT FOR USE IN DIAGNOSTIC PROCEDURES"

Our Abpromise to you: Quality guaranteed and expert technical support

- Replacement or refund for products not performing as stated on the datasheet
- Valid for 12 months from date of delivery
- Response to your inquiry within 24 hours
- We provide support in Chinese, English, French, German, Japanese and Spanish
- Extensive multi-media technical resources to help you
- We investigate all quality concerns to ensure our products perform to the highest standards

If the product does not perform as described on this datasheet, we will offer a refund or replacement. For full details of the Abpromise, please visit <https://www.abcam.com/abpromise> or contact our technical team.

Terms and conditions

- Guarantee only valid for products bought direct from Abcam or one of our authorized distributors