


Product datasheet

Anti-Lipoamide Dehydrogenase antibody - C-terminal ab226202

4 Images

Overview

Product name	Anti-Lipoamide Dehydrogenase antibody - C-terminal
Description	Rabbit polyclonal to Lipoamide Dehydrogenase - C-terminal
Host species	Rabbit
Tested applications	Suitable for: IHC-P, WB, IP
Species reactivity	Reacts with: Mouse, Human Predicted to work with: Dog, Orangutan 
Immunogen	Synthetic peptide within Human Lipoamide Dehydrogenase aa 459-509 (C terminal). The exact sequence is proprietary. (NP_000099.2). Database link: P09622
Positive control	IHC-P: Human prostate carcinoma and ovarian carcinoma tissues. WB: HeLa, HEK-293T, Jurkat, TCMK-1 and NIH/3T3 whole cell lysates. IP: HEK-293T whole cell lysate.
General notes	<p>The Life Science industry has been in the grips of a reproducibility crisis for a number of years. Abcam is leading the way in addressing this with our range of recombinant monoclonal antibodies and knockout edited cell lines for gold-standard validation. Please check that this product meets your needs before purchasing.</p> <p>If you have any questions, special requirements or concerns, please send us an inquiry and/or contact our Support team ahead of purchase. Recommended alternatives for this product can be found below, along with publications, customer reviews and Q&As</p>

Properties

Form	Liquid
Storage instructions	Shipped at 4°C. Store at +4°C short term (1-2 weeks). Upon delivery aliquot. Store at -20°C long term. Avoid freeze / thaw cycle.
Storage buffer	pH: 7 Preservative: 0.09% Sodium azide Constituent: Tris citrate/phosphate
	pH 7 to 8
Purity	Immunogen affinity purified

Purification notes	ab226202 was affinity purified using an epitope specific to Lipoamide Dehydrogenase immobilized on solid support.
Clonality	Polyclonal
Isotype	IgG

Applications

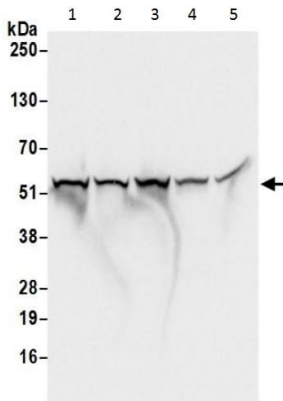
The Abpromise guarantee Our **Abpromise guarantee** covers the use of ab226202 in the following tested applications. The application notes include recommended starting dilutions; optimal dilutions/concentrations should be determined by the end user.

Application	Abreviews	Notes
IHC-P		1/1000 - 1/5000. Perform heat mediated antigen retrieval with citrate buffer pH 6 before commencing with IHC staining protocol.
WB		1/1000 - 1/5000. Predicted molecular weight: 54 kDa.
IP		Use at 2-10 µg/mg of lysate.

Target

Function	Lipoamide dehydrogenase is a component of the glycine cleavage system as well as of the alpha-ketoacid dehydrogenase complexes. Involved in the hyperactivation of spermatazoa during capacitation and in the spermatazoal acrosome reaction.
Involvement in disease	Note=Defects in DLD are involved in the development of congenital infantile lactic acidosis. Defects in DLD are a cause of maple syrup urine disease (MSUD) [MIM:248600]. MSUD is characterized by mental and physical retardation, feeding problems and a maple syrup odor to the urine. The keto acids of the branched-chain amino acids are present in the urine, resulting from a block in oxidative decarboxylation.
Sequence similarities	Belongs to the class-I pyridine nucleotide-disulfide oxidoreductase family.
Post-translational modifications	Tyrosine phosphorylated.
Cellular localization	Mitochondrion matrix.

Images



Western blot - Anti-Lipoamide Dehydrogenase antibody - C-terminal (ab226202)

All lanes : Anti-Lipoamide Dehydrogenase antibody - C-terminal (ab226202) at 0.4 µg/ml

Lane 1 : HeLa (human epithelial cell line from cervix adenocarcinoma) whole cell lysate

Lane 2 : HEK-293T (human epithelial cell line from embryonic kidney transformed with large T antigen) whole cell lysate

Lane 3 : Jurkat (human T cell leukemia cell line from peripheral blood) whole cell lysate

Lane 4 : TCMK-1 (mouse kidney epithelial cell line) whole cell lysate

Lane 5 : NIH/3T3 (mouse embryo fibroblast cell line) whole cell lysate

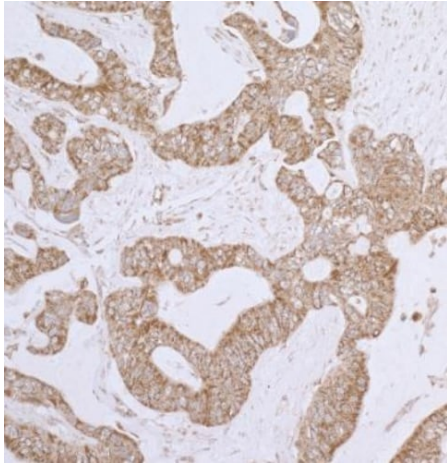
Lysates/proteins at 50 µg per lane.

Developed using the ECL technique.

Predicted band size: 54 kDa

Exposure time: 1 second

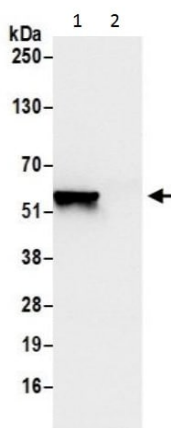
Lysates prepared using NETN lysis buffer.



Formalin-fixed, paraffin-embedded human ovarian carcinoma tissue stained for Lipoamide Dehydrogenase with ab226202 at 1/1000 dilution in immunohistochemical analysis.

Detection: DAB staining.

Immunohistochemistry (Formalin/PFA-fixed paraffin-embedded sections) - Anti-Lipoamide Dehydrogenase antibody - C-terminal (ab226202)



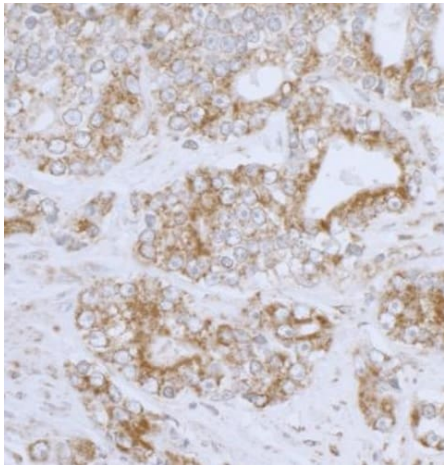
Lipoamide Dehydrogenase was immunoprecipitated from HEK-293T (human epithelial cell line from embryonic kidney transformed with large T antigen) whole cell lysate (prepared using NETN lysis buffer; 1 mg for IP, 20% of IP loaded) with ab226202 at 6 $\mu\text{g}/\text{mg}$ lysate. Western blot was performed from the immunoprecipitate using ab226202 at 0.4 $\mu\text{g}/\text{ml}$.

Lane 1: ab226202 IP in HEK-293T whole cell lysate.

Lane 2: Control IgG IP in HEK-293T whole cell lysate.

Detection: Chemiluminescence with exposure time of 1 second.

Immunoprecipitation - Anti-Lipoamide Dehydrogenase antibody - C-terminal (ab226202)



Formalin-fixed, paraffin-embedded human prostate carcinoma tissue stained for Lipoamide Dehydrogenase with ab226202 at 1/5000 dilution in immunohistochemical analysis.

Detection: DAB staining.

Immunohistochemistry (Formalin/PFA-fixed paraffin-embedded sections) - Anti-Lipoamide Dehydrogenase antibody - C-terminal (ab226202)

Please note: All products are "FOR RESEARCH USE ONLY. NOT FOR USE IN DIAGNOSTIC PROCEDURES"

Our Abpromise to you: Quality guaranteed and expert technical support

- Replacement or refund for products not performing as stated on the datasheet
- Valid for 12 months from date of delivery
- Response to your inquiry within 24 hours
- We provide support in Chinese, English, French, German, Japanese and Spanish
- Extensive multi-media technical resources to help you
- We investigate all quality concerns to ensure our products perform to the highest standards

If the product does not perform as described on this datasheet, we will offer a refund or replacement. For full details of the Abpromise, please visit <https://www.abcam.com/abpromise> or contact our technical team.

Terms and conditions

- Guarantee only valid for products bought direct from Abcam or one of our authorized distributors