


## Product datasheet

# Anti-Lipoprotein lipase antibody [EPR1555(2)] ab172953

Recombinant RabMAb

[1 References](#) [4 Images](#)

### Overview

<b>Product name</b>	Anti-Lipoprotein lipase antibody [EPR1555(2)]
<b>Description</b>	Rabbit monoclonal [EPR1555(2)] to Lipoprotein lipase
<b>Host species</b>	Rabbit
<b>Tested applications</b>	<b>Suitable for:</b> WB, IHC-P <b>Unsuitable for:</b> ICC/IF or IP
<b>Species reactivity</b>	<b>Reacts with:</b> Human <b>Predicted to work with:</b> Guinea pig, Cat 
<b>Immunogen</b>	Synthetic peptide. This information is proprietary to Abcam and/or its suppliers.
<b>Positive control</b>	Human fetal kidney, fetal heart, pancreas and fetal liver lysates. Human liver and pancreas tissue.
<b>General notes</b>	<p>This product is a recombinant monoclonal antibody, which offers several advantages including:</p> <ul style="list-style-type: none"> <li>- High batch-to-batch consistency and reproducibility</li> <li>- Improved sensitivity and specificity</li> <li>- Long-term security of supply</li> <li>- Animal-free production</li> </ul> <p>For more information <a href="#">see here</a>.</p> <p>Our RabMAb<sup>®</sup> technology is a patented hybridoma-based technology for making rabbit monoclonal antibodies. For details on our patents, please refer to <a href="#">RabMAb<sup>®</sup> patents</a>.</p> <p>Mouse, Rat: We have preliminary internal testing data to indicate this antibody may not react with these species. Please contact us for more information.</p>

### Properties

<b>Form</b>	Liquid
<b>Storage instructions</b>	Shipped at 4°C. Store at +4°C short term (1-2 weeks). Upon delivery aliquot. Store at -20°C long term. Avoid freeze / thaw cycle.
<b>Storage buffer</b>	pH: 7.20 Preservative: 0.01% Sodium azide Constituents: 9% PBS, 40% Glycerol (glycerin, glycerine), 0.05% BSA, 50% Tissue culture supernatant

<b>Purity</b>	Protein A purified
<b>Clonality</b>	Monoclonal
<b>Clone number</b>	EPR1555(2)
<b>Isotype</b>	IgG

## Applications

**The Abpromise guarantee** Our **Abpromise guarantee** covers the use of ab172953 in the following tested applications.

The application notes include recommended starting dilutions; optimal dilutions/concentrations should be determined by the end user.

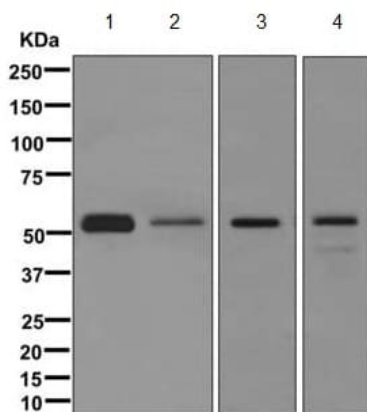
Application	Abreviews	Notes
<b>WB</b>		1/10000 - 1/50000. Predicted molecular weight: 53 kDa.
<b>IHC-P</b>		1/250 - 1/500. Perform heat mediated antigen retrieval with citrate buffer pH 6 before commencing with IHC staining protocol.

**Application notes** Is unsuitable for ICC/IF or IP.

## Target

<b>Function</b>	The primary function of this lipase is the hydrolysis of triglycerides of circulating chylomicrons and very low density lipoproteins (VLDL). Binding to heparin sulfate proteoglycans at the cell surface is vital to the function. The apolipoprotein, APOC2, acts as a coactivator of LPL activity in the presence of lipids on the luminal surface of vascular endothelium.
<b>Involvement in disease</b>	Defects in LPL are the cause of lipoprotein lipase deficiency (LPL deficiency) [MIM:238600]; also known as familial chylomicronemia or hyperlipoproteinemia type I. LPL deficiency chylomicronemia is a recessive disorder usually manifesting in childhood. On a normal diet, patients often present with abdominal pain, hepatosplenomegaly, lipemia retinalis, eruptive xanthomata, and massive hypertriglyceridemia, sometimes complicated with acute pancreatitis.
<b>Sequence similarities</b>	Belongs to the AB hydrolase superfamily. Lipase family. Contains 1 PLAT domain.
<b>Post-translational modifications</b>	Tyrosine nitration after lipopolysaccharide (LPS) challenge down-regulates the lipase activity.
<b>Cellular localization</b>	Cell membrane. Secreted. Locates to the plasma membrane of microvilli of hepatocytes with triacyl-glycerol-rich lipoproteins (TRL). Some of the bound LPL is then internalized and located inside non-coated endocytic vesicles.

## Images



Western blot - Anti-Lipoprotein lipase antibody  
[EPR1555(2)] (ab172953)

**All lanes :** Anti-Lipoprotein lipase antibody [EPR1555(2)]  
(ab172953) at 1/10000 dilution

**Lane 1 :** Human fetal kidney tissue lysate

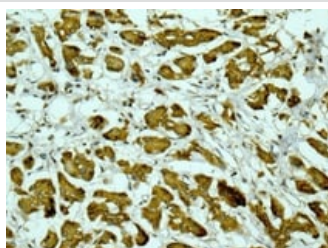
**Lane 2 :** Human fetal heart tissue lysate

**Lane 3 :** Human pancreas tissue lysate

**Lane 4 :** Human fetal liver tissue lysate

Lysates/proteins at 10 µg per lane.

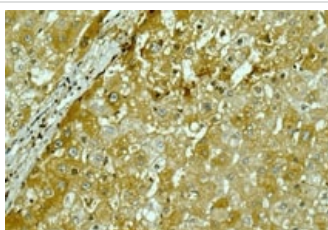
**Predicted band size:** 53 kDa



Immunohistochemistry (Formalin/PFA-fixed paraffin-  
embedded sections) - Anti-Lipoprotein lipase  
antibody [EPR1555(2)] (ab172953)

Immunohistochemical analysis of paraffin-embedded Human  
pancreas tissue labeling Lipoprotein lipase with ab172953 at a  
1/250 dilution.

Perform heat mediated antigen retrieval with citrate buffer pH 6  
before commencing with IHC staining protocol.



Immunohistochemistry (Formalin/PFA-fixed paraffin-  
embedded sections) - Anti-Lipoprotein lipase  
antibody [EPR1555(2)] (ab172953)

Immunohistochemical analysis of paraffin-embedded Human liver  
tissue labeling Lipoprotein lipase with ab172953 at a 1/250 dilution.

Perform heat mediated antigen retrieval with citrate buffer pH 6  
before commencing with IHC staining protocol.

### Why choose a recombinant antibody?



**Research with confidence**  
Consistent and reproducible results



**Long-term and scalable supply**  
Recombinant technology



**Success from the first experiment**  
Confirmed specificity



**Ethical standards compliant**  
Animal-free production

Anti-Lipoprotein lipase antibody [EPR1555(2)]  
(ab172953)

**Please note:** All products are "FOR RESEARCH USE ONLY. NOT FOR USE IN DIAGNOSTIC PROCEDURES"

### Our Abpromise to you: Quality guaranteed and expert technical support

---

- Replacement or refund for products not performing as stated on the datasheet
- Valid for 12 months from date of delivery
- Response to your inquiry within 24 hours
- We provide support in Chinese, English, French, German, Japanese and Spanish
- Extensive multi-media technical resources to help you
- We investigate all quality concerns to ensure our products perform to the highest standards

If the product does not perform as described on this datasheet, we will offer a refund or replacement. For full details of the Abpromise, please visit <https://www.abcam.com/abpromise> or contact our technical team.

### Terms and conditions

---

- Guarantee only valid for products bought direct from Abcam or one of our authorized distributors