

## Product datasheet

### Anti-LKB1 (phospho S428) antibody ab63473

★★★★★ [1 Abreviews](#) [8 References](#) [2 Images](#)

#### Overview

<b>Product name</b>	Anti-LKB1 (phospho S428) antibody
<b>Description</b>	Rabbit polyclonal to LKB1 (phospho S428)
<b>Host species</b>	Rabbit
<b>Tested applications</b>	<b>Suitable for:</b> ICC/IF, WB
<b>Species reactivity</b>	<b>Reacts with:</b> Mouse
<b>Immunogen</b>	Synthetic peptide corresponding to Human LKB1 (phospho S428). Database link: <a href="#">Q15831</a>
<b>General notes</b>	<p>The Life Science industry has been in the grips of a reproducibility crisis for a number of years. Abcam is leading the way in addressing this with our range of recombinant monoclonal antibodies and knockout edited cell lines for gold-standard validation. Please check that this product meets your needs before purchasing.</p> <p>If you have any questions, special requirements or concerns, please send us an inquiry and/or contact our Support team ahead of purchase. Recommended alternatives for this product can be found below, along with publications, customer reviews and Q&amp;As</p>

#### Properties

<b>Form</b>	Liquid
<b>Storage instructions</b>	Shipped at 4°C. Upon delivery aliquot and store at -20°C. Avoid freeze / thaw cycles.
<b>Storage buffer</b>	<p>pH: 7.40</p> <p>Preservative: 0.02% Sodium azide</p> <p>Constituents: PBS, 50% Glycerol (glycerin, glycerine), 0.87% Sodium chloride</p> <p>Without Mg<sup>2+</sup> and Ca<sup>2+</sup></p>
<b>Purity</b>	Immunogen affinity purified
<b>Purification notes</b>	ab63473 was affinity purified from rabbit antiserum by affinity chromatography using epitope specific phosphopeptide. The antibody against non phosphopeptide was removed by chromatography using non phosphopeptide corresponding to the phosphorylation site.
<b>Clonality</b>	Polyclonal
<b>Isotype</b>	IgG

## Applications

### The Abpromise guarantee

Our **Abpromise guarantee** covers the use of ab63473 in the following tested applications.

The application notes include recommended starting dilutions; optimal dilutions/concentrations should be determined by the end user.

Application	Abreviews	Notes
ICC/IF		1/500 - 1/1000.
WB	★★★★★ (1)	1/500 - 1/1000. Predicted molecular weight: 48 kDa.

## Target

### Function

Essential role in G1 cell cycle arrest. Phosphorylates and activates members of the AMPK-related subfamily of protein kinases. Tumor suppressor.

### Tissue specificity

Ubiquitously expressed. Strongest expression in testis and fetal liver.

### Involvement in disease

Defects in STK11 are a cause of Peutz-Jeghers syndrome (PJS) [MIM:175200]. PJS is a rare hereditary disease in which there is predisposition to benign and malignant tumors of many organ systems. PJS is an autosomal dominant disorder characterized by melanocytic macules of the lips, multiple gastrointestinal hamartomatous polyps and an increased risk for various neoplasms, including gastrointestinal cancer.

Defects in STK11 have been associated with testicular tumors (TEST) [MIM:273300]. A common solid malignancy in males. Germ cell tumors of the testis constitute 95% of all testicular neoplasms.

### Sequence similarities

Belongs to the protein kinase superfamily. CAMK Ser/Thr protein kinase family. LKB1 subfamily. Contains 1 protein kinase domain.

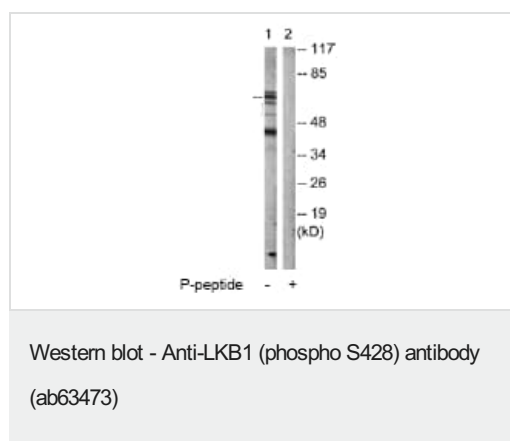
### Post-translational modifications

Phosphorylated by a cAMP-dependent protein kinase.

### Cellular localization

Nucleus. Cytoplasm. Relocates to the cytoplasm when bound to CAB39 and STRAD or CAB39 and ALS2CR2.

## Images



**All lanes :** Anti-LKB1 (phospho S428) antibody (ab63473) at 1/500 dilution

**Lane 1 :** mouse brain extracts

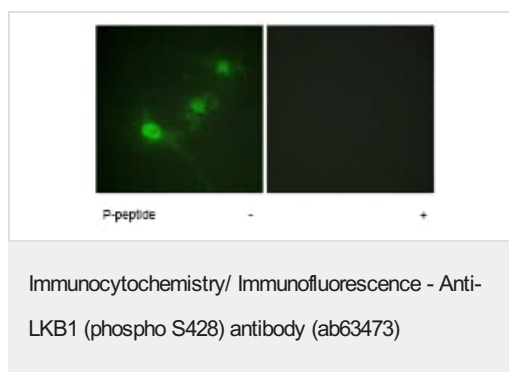
**Lane 2 :** mouse brain extracts with immunising peptide at 10 µg

Lysates/proteins at 30 µg per lane.

**Predicted band size:** 48 kDa

**Observed band size:** 48 kDa

**Additional bands at:** 45 kDa. We are unsure as to the identity of these extra bands.



ab63473 at 1/500 dilution staining LKB1 in NIH3T3 cells by Immunofluorescence, in the absence or presence of the immunising peptide.

**Please note:** All products are "FOR RESEARCH USE ONLY. NOT FOR USE IN DIAGNOSTIC PROCEDURES"

### Our Abpromise to you: Quality guaranteed and expert technical support

---

- Replacement or refund for products not performing as stated on the datasheet
- Valid for 12 months from date of delivery
- Response to your inquiry within 24 hours
- We provide support in Chinese, English, French, German, Japanese and Spanish
- Extensive multi-media technical resources to help you
- We investigate all quality concerns to ensure our products perform to the highest standards

If the product does not perform as described on this datasheet, we will offer a refund or replacement. For full details of the Abpromise, please visit <https://www.abcam.com/abpromise> or contact our technical team.

### Terms and conditions

---

- Guarantee only valid for products bought direct from Abcam or one of our authorized distributors