

Product datasheet

Anti-LMOD1 antibody ab244415

[6 Images](#)

Overview

Product name	Anti-LMOD1 antibody
Description	Rabbit polyclonal to LMOD1
Host species	Rabbit
Tested applications	Suitable for: WB, ICC/IF, IHC-P
Species reactivity	Reacts with: Human
Immunogen	Recombinant fragment corresponding to Human LMOD1 aa 50-150. Database link: P29536 Run BLAST with Run BLAST with
Positive control	IHC-P: Human prostate, smooth muscle and colon tissues. WB: RT4 cell lysate. ICC/IF: U-2 OS cells.
General notes	<p>The Life Science industry has been in the grips of a reproducibility crisis for a number of years. Abcam is leading the way in addressing this with our range of recombinant monoclonal antibodies and knockout edited cell lines for gold-standard validation. Please check that this product meets your needs before purchasing.</p> <p>If you have any questions, special requirements or concerns, please send us an inquiry and/or contact our Support team ahead of purchase. Recommended alternatives for this product can be found below, along with publications, customer reviews and Q&As</p>

Properties

Form	Liquid
Storage instructions	Shipped at 4°C. Store at +4°C short term (1-2 weeks). Upon delivery aliquot. Store at -20°C long term. Avoid freeze / thaw cycle.
Storage buffer	pH: 7.20 Preservative: 0.02% Sodium azide Constituents: PBS, 40% Glycerol (glycerin, glycerine)
Purity	Immunogen affinity purified
Clonality	Polyclonal
Isotype	IgG

Applications

The Abpromise guarantee Our **Abpromise guarantee** covers the use of ab244415 in the following tested applications.

The application notes include recommended starting dilutions; optimal dilutions/concentrations should be determined by the end user.

Application	Abreviews	Notes
WB		Use a concentration of 0.04 - 0.4 µg/ml. Predicted molecular weight: 67 kDa.
ICC/IF		Use a concentration of 0.25 - 2 µg/ml. Fixation/Permeabilization: PFA/Triton X-100.
IHC-P		1/50 - 1/200. Perform heat mediated antigen retrieval with citrate buffer pH 6 before commencing with IHC staining protocol.

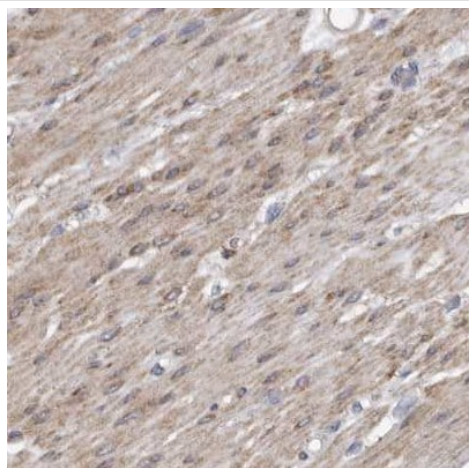
Target

Tissue specificity Smooth muscle (heart, skeletal muscle, colon and small intestine), a subset of striated muscle fibers, and at low level in thyroid.

Sequence similarities Belongs to the tropomodulin family.
Contains 1 WH2 domain.

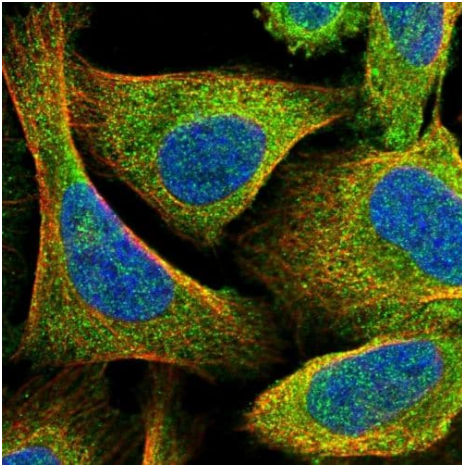
Cellular localization Cytoplasm. Cytoplasm > cytoskeleton.

Images



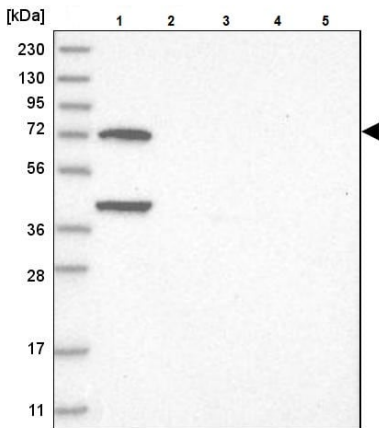
Paraffin-embedded human smooth muscle tissue stained for LMOD1 using ab244415 at 1/50 dilution in immunohistochemical analysis.

Immunohistochemistry (Formalin/PFA-fixed paraffin-embedded sections) - Anti-LMOD1 antibody (ab244415)



Immunocytochemistry/ Immunofluorescence - Anti-LMOD1 antibody (ab244415)

PFA-fixed, Triton X-100 permeabilized U-2 OS (human bone osteosarcoma epithelial cell line) cells stained for LMOD1 (green) using ab244415 at 4 $\mu\text{g/ml}$ in ICC/IF.



Western blot - Anti-LMOD1 antibody (ab244415)

All lanes : Anti-LMOD1 antibody (ab244415) at 0.4 $\mu\text{g/ml}$

Lane 1 : RT4 (human urinary bladder cancer cell line) cell lysate

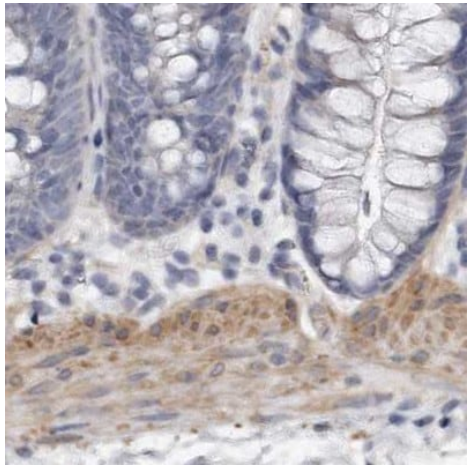
Lane 2 : U-251 MG (human brain glioma cell line) cell lysate

Lane 3 : Human plasma (IgG/HSA depleted)

Lane 4 : Human liver lysate

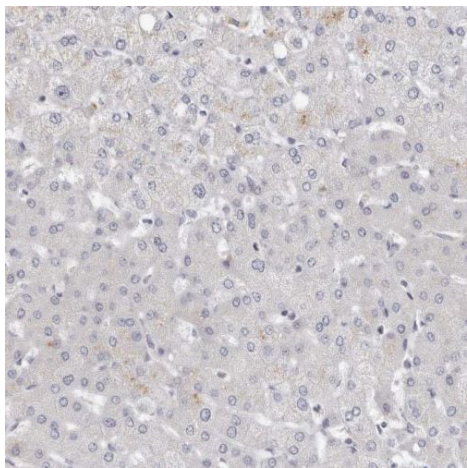
Lane 5 : Human tonsil lysate

Predicted band size: 67 kDa



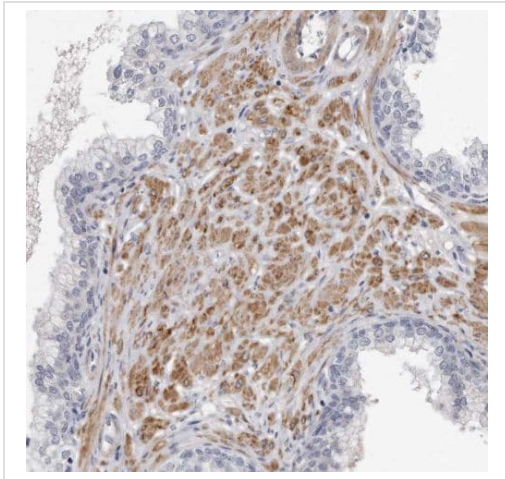
Paraffin-embedded human colon tissue stained for LMOD1 using ab244415 at 1/50 dilution in immunohistochemical analysis.

Immunohistochemistry (Formalin/PFA-fixed paraffin-embedded sections) - Anti-LMOD1 antibody (ab244415)



Paraffin-embedded human liver tissue stained for LMOD1 using ab244415 at 1/50 dilution in immunohistochemical analysis.

Immunohistochemistry (Formalin/PFA-fixed paraffin-embedded sections) - Anti-LMOD1 antibody (ab244415)



Paraffin-embedded human prostate tissue stained for LMOD1 using ab244415 at 1/50 dilution in immunohistochemical analysis.

Immunohistochemistry (Formalin/PFA-fixed paraffin-embedded sections) - Anti-LMOD1 antibody (ab244415)

Please note: All products are "FOR RESEARCH USE ONLY. NOT FOR USE IN DIAGNOSTIC PROCEDURES"

Our Abpromise to you: Quality guaranteed and expert technical support

- Replacement or refund for products not performing as stated on the datasheet
- Valid for 12 months from date of delivery
- Response to your inquiry within 24 hours
- We provide support in Chinese, English, French, German, Japanese and Spanish
- Extensive multi-media technical resources to help you
- We investigate all quality concerns to ensure our products perform to the highest standards

If the product does not perform as described on this datasheet, we will offer a refund or replacement. For full details of the Abpromise, please visit <https://www.abcam.com/abpromise> or contact our technical team.

Terms and conditions

- Guarantee only valid for products bought direct from Abcam or one of our authorized distributors