

Product datasheet

Anti-LMTK2 antibody [EPR7836(2)] ab172622

Recombinant RabMAb

3 Images

Overview

Product name	Anti-LMTK2 antibody [EPR7836(2)]
Description	Rabbit monoclonal [EPR7836(2)] to LMTK2
Host species	Rabbit
Tested applications	Suitable for: IHC-P, WB Unsuitable for: IP
Species reactivity	Reacts with: Human Does not react with: Mouse, Rat
Immunogen	Synthetic peptide within Human LMTK2 aa 1300-1400. The exact sequence is proprietary. Database link: Q8IWU2
Positive control	Human skeletal muscle lysate; Human skeletal muscle tissue.
General notes	This product is a recombinant monoclonal antibody, which offers several advantages including: <ul style="list-style-type: none"> - High batch-to-batch consistency and reproducibility - Improved sensitivity and specificity - Long-term security of supply - Animal-free production For more information see here . Our RabMAb [®] technology is a patented hybridoma-based technology for making rabbit monoclonal antibodies. For details on our patents, please refer to RabMAb[®] patents .

Properties

Form	Liquid
Storage instructions	Shipped at 4°C. Store at +4°C short term (1-2 weeks). Upon delivery aliquot. Store at -20°C long term. Avoid freeze / thaw cycle.
Storage buffer	pH: 7.20 Preservative: 0.01% Sodium azide Constituents: 9% PBS, 40% Glycerol (glycerin, glycerine), 0.05% BSA, 50% Tissue culture supernatant
Purity	Tissue culture supernatant
Clonality	Monoclonal

Clone number EPR7836(2)
Isotype IgG

Applications

The Abpromise guarantee Our **Abpromise guarantee** covers the use of ab172622 in the following tested applications.
The application notes include recommended starting dilutions; optimal dilutions/concentrations should be determined by the end user.

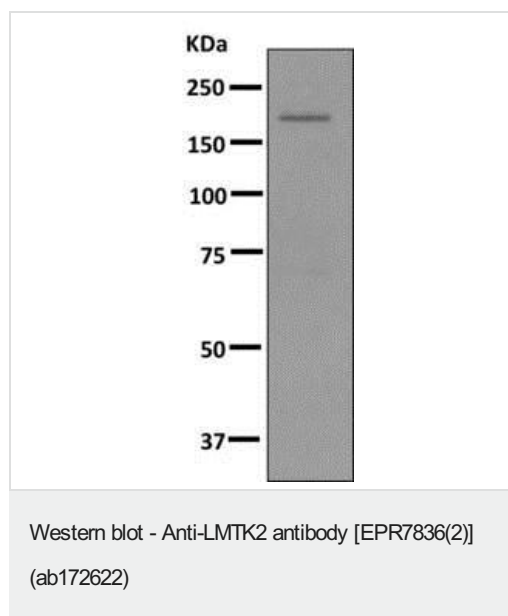
Application	Abreviews	Notes
IHC-P		1/100 - 1/250. Perform heat mediated antigen retrieval before commencing with IHC staining protocol.
WB		1/1000 - 1/5000. Predicted molecular weight: 164 kDa.

Application notes Is unsuitable for IP.

Target

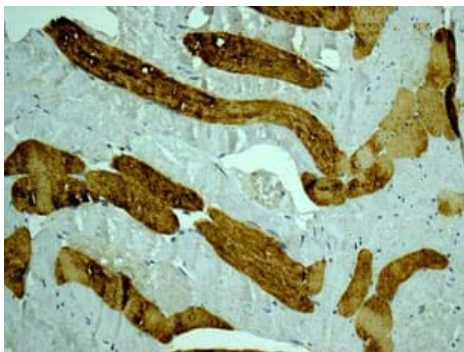
Function Phosphorylates PPP1C, phosphorylase b and CFTR.
Tissue specificity Mainly expressed in skeletal muscle, and weakly in brain and pancreas.
Sequence similarities Belongs to the protein kinase superfamily. Tyr protein kinase family. Contains 1 protein kinase domain.
Post-translational modifications Autophosphorylated. Phosphorylated.
Cellular localization Membrane.

Images



Anti-LMTK2 antibody [EPR7836(2)] (ab172622) at 1/1000 dilution
+ Human skeletal muscle lysate at 10 µg

Predicted band size: 164 kDa



Immunohistochemistry (Formalin/PFA-fixed paraffin-embedded sections) - Anti-LMTK2 antibody [EPR7836(2)] (ab172622)

Immunohistochemical analysis of paraffin-embedded Human skeletal muscle tissue labeling LMTK2 with ab172622 at 1/100 dilution.

Perform heat mediated antigen retrieval before commencing with IHC staining protocol.

Why choose a recombinant antibody?



Research with confidence
Consistent and reproducible results



Long-term and scalable supply
Recombinant technology



Success from the first experiment
Confirmed specificity



Ethical standards compliant
Animal-free production

Anti-LMTK2 antibody [EPR7836(2)] (ab172622)

Please note: All products are "FOR RESEARCH USE ONLY. NOT FOR USE IN DIAGNOSTIC PROCEDURES"

Our Abpromise to you: Quality guaranteed and expert technical support

- Replacement or refund for products not performing as stated on the datasheet
- Valid for 12 months from date of delivery
- Response to your inquiry within 24 hours
- We provide support in Chinese, English, French, German, Japanese and Spanish
- Extensive multi-media technical resources to help you
- We investigate all quality concerns to ensure our products perform to the highest standards

If the product does not perform as described on this datasheet, we will offer a refund or replacement. For full details of the Abpromise, please visit <https://www.abcam.com/abpromise> or contact our technical team.

Terms and conditions

- Guarantee only valid for products bought direct from Abcam or one of our authorized distributors