

Product datasheet

Anti-LNP antibody ab121416

★★★★★ [2 Abreviews](#) [2 References](#) [7 Images](#)

Overview

Product name	Anti-LNP antibody
Description	Rabbit polyclonal to LNP
Host species	Rabbit
Tested applications	Suitable for: ICC/IF, WB, IHC-P
Species reactivity	Reacts with: Human
Immunogen	antigen, corresponding to amino acids 254-375 of Human LNP (Q9C0E8).
Positive control	IHC-P: Human tonsil, cerebellum, testis and cervix tissues. WB: U-138 MG cell lysate. ICC: U-251 MG cells.
General notes	<p>The Life Science industry has been in the grips of a reproducibility crisis for a number of years. Abcam is leading the way in addressing this with our range of recombinant monoclonal antibodies and knockout edited cell lines for gold-standard validation. Please check that this product meets your needs before purchasing.</p> <p>If you have any questions, special requirements or concerns, please send us an inquiry and/or contact our Support team ahead of purchase. Recommended alternatives for this product can be found below, along with publications, customer reviews and Q&As</p>

Properties

Form	Liquid
Storage instructions	Shipped at 4°C. Upon delivery aliquot and store at -20°C. Avoid repeated freeze / thaw cycles.
Storage buffer	pH: 7.20 Preservative: 0.02% Sodium azide Constituents: 59% PBS, 40% Glycerol
Purity	Immunogen affinity purified
Clonality	Polyclonal
Isotype	IgG

Applications

The Abpromise guarantee Our **Abpromise guarantee** covers the use of ab121416 in the following tested applications.

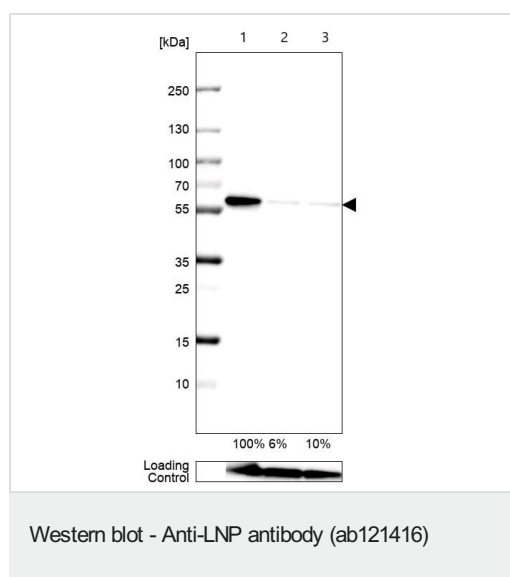
The application notes include recommended starting dilutions; optimal dilutions/concentrations should be determined by the end user.

Application	Abreviews	Notes
ICC/IF	★★★★★ (1)	Use a concentration of 0.25 - 2 µg/ml.
WB	★★★★★ (1)	Use a concentration of 0.04 - 0.4 µg/ml. Predicted molecular weight: 48 kDa.
IHC-P		1/200 - 1/500. Perform heat mediated antigen retrieval with citrate buffer pH 6 before commencing with IHC staining protocol.

Target

Function	May be involved in limb and central nervous system development.
Sequence similarities	Belongs to the lunapark family.
Cellular localization	Membrane.

Images



All lanes : Anti-LNP antibody (ab121416) at 0.4 µg/ml

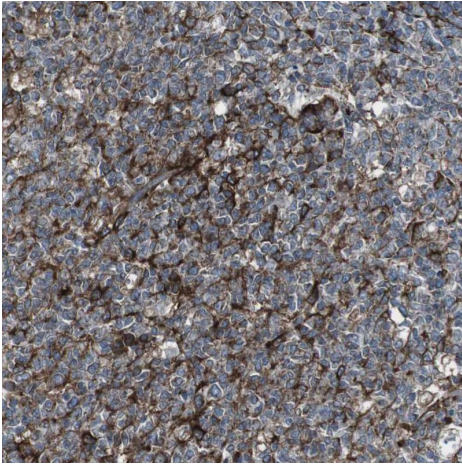
Lane 1 : U-138 MG (human glioblastoma cell line) transfected with control siRNA, whole cell lysate

Lane 2 : U-138 MG transfected with target specific siRNA probe #1, whole cell lysate

Lane 3 : U-138 MG transfected with target specific siRNA probe #2, whole cell lysate

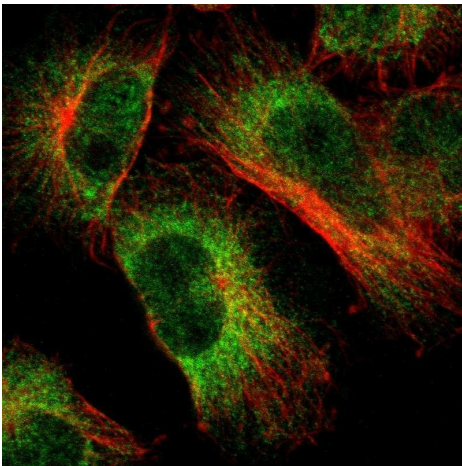
Predicted band size: 48 kDa

Loading Control: Anti-GAPDH



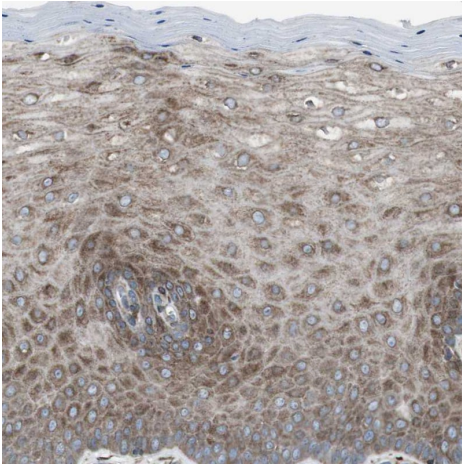
Immunohistochemical analysis of human tonsil tissue labeling LNP with ab121416 at 1/500 dilution.

Immunohistochemistry (Formalin/PFA-fixed paraffin-embedded sections) - Anti-LNP antibody (ab121416)



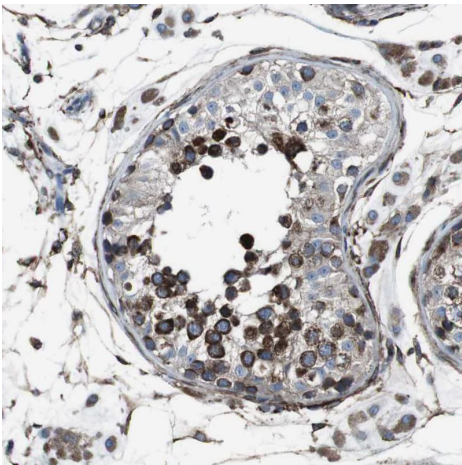
Immunofluorescent staining of Human cell line U-251MG shows positivity in nucleus but not nucleoli and cytoplasm. Recommended concentration of ab121416 1-4 $\mu\text{g/ml}$. Cells treated with PFA/Triton X-100.

Immunocytochemistry/ Immunofluorescence - Anti-LNP antibody (ab121416)



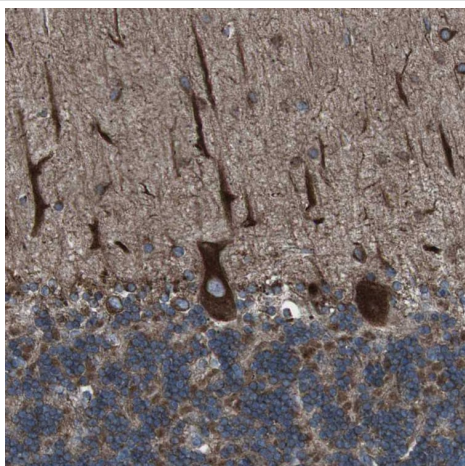
Immunohistochemical analysis of human cervix tissue labeling LNP with ab121416 at 1/500 dilution.

Immunohistochemistry (Formalin/PFA-fixed paraffin-embedded sections) - Anti-LNP antibody (ab121416)



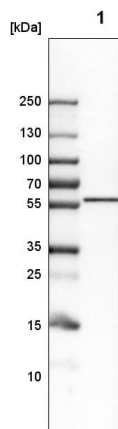
Immunohistochemical analysis of human testis tissue labeling LNP with ab121416 at 1/500 dilution.

Immunohistochemistry (Formalin/PFA-fixed paraffin-embedded sections) - Anti-LNP antibody (ab121416)



Immunohistochemical analysis of human cerebellum tissue labeling LNP with ab121416 at 1/500 dilution.

Immunohistochemistry (Formalin/PFA-fixed paraffin-embedded sections) - Anti-LNP antibody (ab121416)



Anti-LNP antibody (ab121416) at 0.04 $\mu\text{g/ml}$ + U-138 MG cell lysate

Performed under reducing conditions.

Predicted band size: 48 kDa

Western blot analysis of human U-138 MG cell lysate labeling LNP with ab121416 at 0.04 $\mu\text{g/ml}$.

Western blot - Anti-LNP antibody (ab121416)

Please note: All products are "FOR RESEARCH USE ONLY. NOT FOR USE IN DIAGNOSTIC PROCEDURES"

Our Abpromise to you: Quality guaranteed and expert technical support

- Replacement or refund for products not performing as stated on the datasheet

- Valid for 12 months from date of delivery
- Response to your inquiry within 24 hours

- We provide support in Chinese, English, French, German, Japanese and Spanish
- Extensive multi-media technical resources to help you
- We investigate all quality concerns to ensure our products perform to the highest standards

If the product does not perform as described on this datasheet, we will offer a refund or replacement. For full details of the Abpromise, please visit <https://www.abcam.com/abpromise> or contact our technical team.

Terms and conditions

- Guarantee only valid for products bought direct from Abcam or one of our authorized distributors