


### Anti-LOK antibody ab70484

[2 References](#) [2 Images](#)

#### Overview

<b>Product name</b>	Anti-LOK antibody
<b>Description</b>	Rabbit polyclonal to LOK
<b>Host species</b>	Rabbit
<b>Tested applications</b>	<b>Suitable for:</b> WB, IP
<b>Species reactivity</b>	<b>Reacts with:</b> Human <b>Predicted to work with:</b> Mouse, Chimpanzee, Gorilla, Orangutan 
<b>Immunogen</b>	Synthetic peptide, corresponding to a region between C terminal amino acids 900-968 of Human LOK
<b>Positive control</b>	Whole cell lysate from HeLa cells
<b>General notes</b>	<p>The Life Science industry has been in the grips of a reproducibility crisis for a number of years. Abcam is leading the way in addressing this with our range of recombinant monoclonal antibodies and knockout edited cell lines for gold-standard validation. Please check that this product meets your needs before purchasing.</p> <p>If you have any questions, special requirements or concerns, please send us an inquiry and/or contact our Support team ahead of purchase. Recommended alternatives for this product can be found below, along with publications, customer reviews and Q&amp;As</p>

#### Properties

<b>Form</b>	Liquid
<b>Storage instructions</b>	Shipped at 4°C. Upon delivery aliquot and store at -20°C. Avoid freeze / thaw cycles.
<b>Storage buffer</b>	pH: 7 Preservative: 0.09% Sodium azide Constituents: 1.815% Tris, 1.764% Sodium citrate, 0.021% PBS
<b>Purity</b>	Immunogen affinity purified
<b>Clonality</b>	Polyclonal
<b>Isotype</b>	IgG

#### Applications

## The Abpromise guarantee

Our **Abpromise guarantee** covers the use of ab70484 in the following tested applications.

The application notes include recommended starting dilutions; optimal dilutions/concentrations should be determined by the end user.

Application	Abreviews	Notes
WB		1/2000 - 1/15000. Predicted molecular weight: 112 kDa.
IP		Use at 1-4 µg/mg of lysate.

## Target

### Function

Can act on substrates such as myelin basic protein and histone 2A on serine and threonine residues.

### Tissue specificity

Expressed predominantly in lymphoid organs.

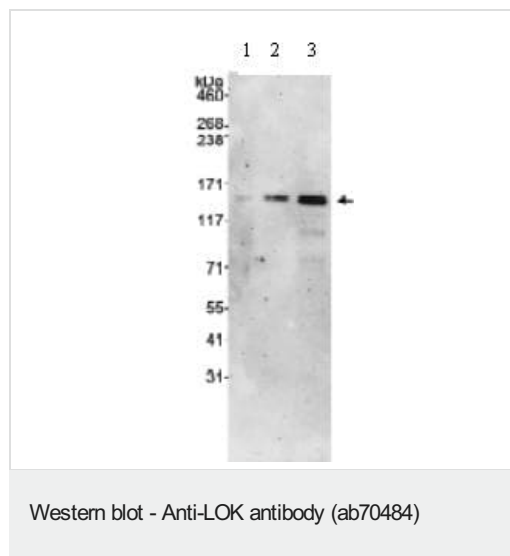
### Sequence similarities

Belongs to the protein kinase superfamily. STE Ser/Thr protein kinase family. STE20 subfamily. Contains 1 protein kinase domain.

### Post-translational modifications

Autophosphorylated.

## Images



**All lanes :** Anti-LOK antibody (ab70484) at 0.1 µg/ml

**Lane 1 :** Whole cell lysate from HeLa cells at 5 µg

**Lane 2 :** Whole cell lysate from HeLa cells at 15 µg

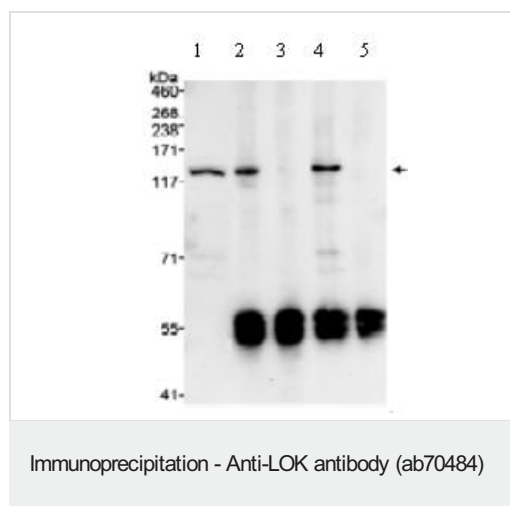
**Lane 3 :** Whole cell lysate from HeLa cells at 50 µg

Developed using the ECL technique.

**Predicted band size:** 112 kDa

**Observed band size:** 112 kDa

Chemiluminescence with exposure times of 1 to 2 minutes.



Detection of Human LOK by Immunoprecipitation in Whole cell lysate from HeLa cells (1 mg for IP), using ab70484 at 1 µg/mg lysate for IP.

Lane 1: input of Human LOK at 50µg

Lane 2: Other anti-human LOK antibody

Lane 3: Other anti-human LOK antibody plus blocking peptide

Lane 4: ab70484

Lane 5: ab70484 plus blocking peptide

Subsequent Western blot LOK detection was performed with 0.1 µg/mg ab70484.

Chemiluminescence with exposure times of 1 to 2 minutes.

**Please note:** All products are "FOR RESEARCH USE ONLY. NOT FOR USE IN DIAGNOSTIC PROCEDURES"

### Our Abpromise to you: Quality guaranteed and expert technical support

- Replacement or refund for products not performing as stated on the datasheet
- Valid for 12 months from date of delivery
- Response to your inquiry within 24 hours
- We provide support in Chinese, English, French, German, Japanese and Spanish
- Extensive multi-media technical resources to help you
- We investigate all quality concerns to ensure our products perform to the highest standards

If the product does not perform as described on this datasheet, we will offer a refund or replacement. For full details of the Abpromise, please visit <https://www.abcam.com/abpromise> or contact our technical team.

### Terms and conditions

- Guarantee only valid for products bought direct from Abcam or one of our authorized distributors