


## Product datasheet

# Anti-Loricrin antibody ab183646

[2 References](#) [1 Image](#)

### Overview

---

<b>Product name</b>	Anti-Loricrin antibody
<b>Description</b>	Rabbit polyclonal to Loricrin
<b>Host species</b>	Rabbit
<b>Tested applications</b>	<b>Suitable for:</b> WB
<b>Species reactivity</b>	<b>Reacts with:</b> Human <b>Predicted to work with:</b> Mouse, Cow, Rhesus monkey 
<b>Immunogen</b>	Recombinant fragment within Human Loricrin aa 248-312. The exact sequence is proprietary. Database link: <a href="#">P23490</a>
<b>Positive control</b>	293T , A431 , HeLa and HepG2 whole cell lysate.
<b>General notes</b>	<p>The Life Science industry has been in the grips of a reproducibility crisis for a number of years. Abcam is leading the way in addressing this with our range of recombinant monoclonal antibodies and knockout edited cell lines for gold-standard validation. Please check that this product meets your needs before purchasing.</p> <p>If you have any questions, special requirements or concerns, please send us an inquiry and/or contact our Support team ahead of purchase. Recommended alternatives for this product can be found below, along with publications, customer reviews and Q&amp;As</p>

### Properties

---

<b>Form</b>	Liquid
<b>Storage instructions</b>	Shipped at 4°C. Store at +4°C short term (1-2 weeks). Upon delivery aliquot. Store at -20°C long term. Avoid freeze / thaw cycle.
<b>Storage buffer</b>	pH: 7.00 Preservative: 0.01% Thimerosal (merthiolate) Constituents: 79.99% PBS, 20% Glycerol (glycerin, glycerine)
<b>Purity</b>	Immunogen affinity purified
<b>Clonality</b>	Polyclonal
<b>Isotype</b>	IgG

### Applications

## The Abpromise guarantee

Our **Abpromise guarantee** covers the use of ab183646 in the following tested applications.

The application notes include recommended starting dilutions; optimal dilutions/concentrations should be determined by the end user.

Application	Abreviews	Notes
WB		1/500 - 1/3000. Predicted molecular weight: 26 kDa.

## Target

### Function

Major keratinocyte cell envelope protein.

### Involvement in disease

Defects in LOR are a cause of progressive symmetric erythrokeratoderma (PSEK) [MIM:133200]. Erythrokeratodermas are a group of disorders characterized by widespread erythematous plaques, either stationary or migratory, associated with features that include palmoplantar keratoderma. PSEK is characterized by erythematous and hyperkeratotic plaques. Defects in LOR are the cause of Vohwinkel syndrome with ichthyosis (VSI) [MIM:604117]; also known as lorocrin keratoderma (LK) or mutilating keratoderma with ichthyosis. VSI is an ichthyotic variant of Vohwinkel syndrome (VS) characterized by progressive symmetric erythrokeratoderma or congenital ichthyosiform erythroderma born as a collodion baby. Common clinical features include hyperkeratosis of the palms and soles with digital constriction.

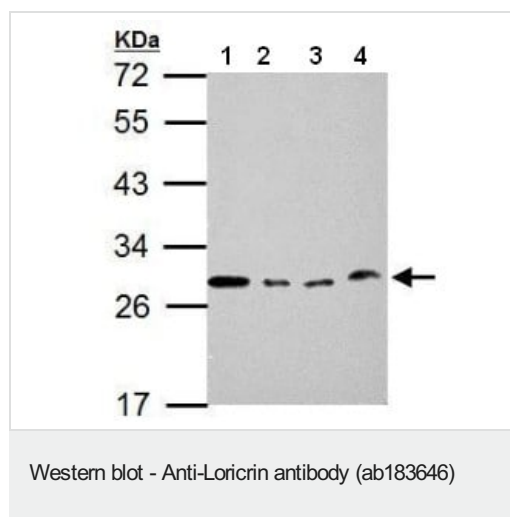
### Post-translational modifications

Substrate of transglutaminases. Some glutamines and lysines are cross-linked to other lorocrin molecules and to SPRRs proteins.  
Contains inter- or intramolecular disulfide-bonds.

### Cellular localization

Cytoplasm. Nucleus > nucleoplasm.

## Images



**All lanes** : Anti-Loricrin antibody (ab183646) at 1/1000 dilution

**Lane 1** : 293T whole cell lysates

**Lane 2** : A431 whole cell lysates

**Lane 3** : HeLa whole cell lysates

**Lane 4** : HepG2 whole cell lysates

Lysates/proteins at 30 µg per lane.

**Predicted band size:** 26 kDa

12 % SDS-PAGE

**Please note:** All products are "FOR RESEARCH USE ONLY. NOT FOR USE IN DIAGNOSTIC PROCEDURES"

## **Our Abpromise to you: Quality guaranteed and expert technical support**

---

- Replacement or refund for products not performing as stated on the datasheet
- Valid for 12 months from date of delivery
- Response to your inquiry within 24 hours
  
- We provide support in Chinese, English, French, German, Japanese and Spanish
- Extensive multi-media technical resources to help you
- We investigate all quality concerns to ensure our products perform to the highest standards

If the product does not perform as described on this datasheet, we will offer a refund or replacement. For full details of the Abpromise, please visit <https://www.abcam.com/abpromise> or contact our technical team.

## **Terms and conditions**

---

- Guarantee only valid for products bought direct from Abcam or one of our authorized distributors