

## Product datasheet

# Anti-Loricrin antibody [EPR7149(2)] - C-terminal ab198994

Recombinant RabMAb

★★★★★ [3 Abreviews](#) [5 References](#) [5 Images](#)

### Overview

<b>Product name</b>	Anti-Loricrin antibody [EPR7149(2)] - C-terminal
<b>Description</b>	Rabbit monoclonal [EPR7149(2)] to Loricrin - C-terminal
<b>Host species</b>	Rabbit
<b>Tested applications</b>	<b>Suitable for:</b> ICC/IF, IHC-P
<b>Species reactivity</b>	<b>Reacts with:</b> Rat, Human
<b>Immunogen</b>	Synthetic peptide. This information is proprietary to Abcam and/or its suppliers.
<b>Positive control</b>	Human skin and rat skin tissue. A431 cells.
<b>General notes</b>	<p>This product is a recombinant monoclonal antibody, which offers several advantages including:</p> <ul style="list-style-type: none"><li>- High batch-to-batch consistency and reproducibility</li><li>- Improved sensitivity and specificity</li><li>- Long-term security of supply</li><li>- Animal-free production</li></ul> <p>For more information <a href="#">see here</a>.</p> <p>Our RabMAb<sup>®</sup> technology is a patented hybridoma-based technology for making rabbit monoclonal antibodies. For details on our patents, please refer to <a href="#">RabMAb<sup>®</sup> patents</a>.</p>

### Properties

<b>Form</b>	Liquid
<b>Storage instructions</b>	Shipped at 4°C. Store at +4°C short term (1-2 weeks). Upon delivery aliquot. Store at -20°C long term. Avoid freeze / thaw cycle.
<b>Storage buffer</b>	pH: 7.2 Preservative: 0.01% Sodium azide Constituents: 40% Glycerol (glycerin, glycerine), 59% PBS, 0.05% BSA
<b>Purity</b>	Protein A purified
<b>Clonality</b>	Monoclonal
<b>Clone number</b>	EPR7149(2)
<b>Isotype</b>	IgG

## Applications

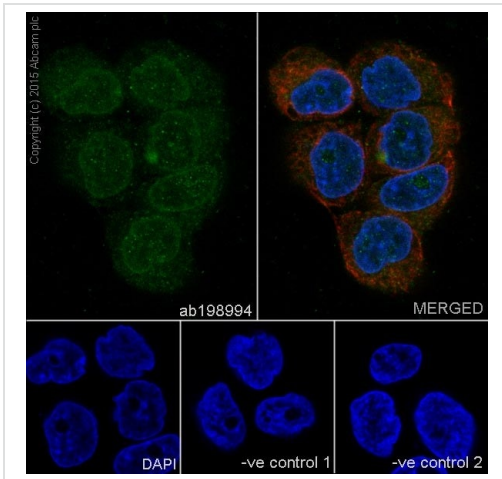
**The Abpromise guarantee** Our **Abpromise guarantee** covers the use of ab198994 in the following tested applications. The application notes include recommended starting dilutions; optimal dilutions/concentrations should be determined by the end user.

Application	Abreviews	Notes
ICC/IF		1/250.
IHC-P	★★★★★ (3)	1/250. Perform heat mediated antigen retrieval with Tris/EDTA buffer pH 9.0 before commencing with IHC staining protocol.

## Target

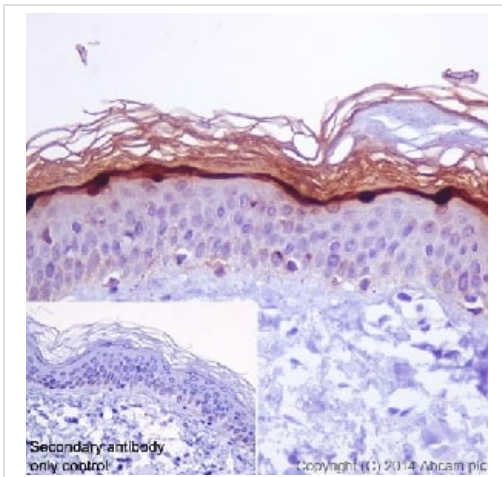
<b>Function</b>	Major keratinocyte cell envelope protein.
<b>Involvement in disease</b>	Defects in LOR are a cause of progressive symmetric erythrokeratoderma (PSEK) [MIM:133200]. Erythrokeratodermas are a group of disorders characterized by widespread erythematous plaques, either stationary or migratory, associated with features that include palmoplantar keratoderma. PSEK is characterized by erythematous and hyperkeratotic plaques. Defects in LOR are the cause of Vohwinkel syndrome with ichthyosis (VSI) [MIM:604117]; also known as loricrin keratoderma (LK) or mutilating keratoderma with ichthyosis. VSI is an ichthyotic variant of Vohwinkel syndrome (VS) characterized by progressive symmetric erythrokeratoderma or congenital ichthyosiform erythroderma born as a collodion baby. Common clinical features include hyperkeratosis of the palms and soles with digital constriction.
<b>Post-translational modifications</b>	Substrate of transglutaminases. Some glutamines and lysines are cross-linked to other loricrin molecules and to SPRRs proteins. Contains inter- or intramolecular disulfide-bonds.
<b>Cellular localization</b>	Cytoplasm. Nucleus > nucleoplasm.

## Images



Immunocytochemistry/ Immunofluorescence - Anti-Loricrin antibody [EPR7149(2)] - C-terminal (ab198994)

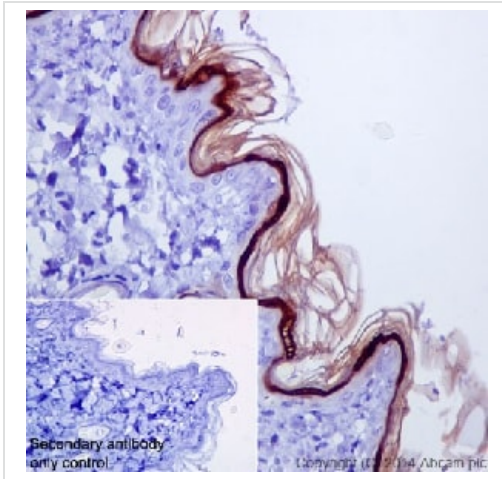
Immunocytochemistry/ Immunofluorescence analysis of A431 cell line labeling Loricrin with ab198994 at a 1/250 dilution. Cells were fixed with 4% paraformaldehyde and permeabilized using 0.1% Triton X-100. Alexa Fluor® 488 Goat anti-Rabbit **ab150077** used as the secondary at a 1/1000 dilution. Counterstained using **ab7291** anti-Tubulin (mouse mAb) at a 1/1000 dilution and **ab150120** Alexa Fluor® 594 Goat anti-Mouse secondary at a 1/500 dilution.



Immunohistochemistry (Formalin/PFA-fixed paraffin-embedded sections) - Anti-Loricrin antibody [EPR7149(2)] - C-terminal (ab198994)

Immunohistochemical analysis of paraffin-embedded human skin tissue sections labeling Loricrin with ab198994 at a 1/500 dilution. Goat anti-rabbit IgG H&L (HRP) **ab97051** used as the secondary at a 1/500 dilution. Counterstain hematoxylin.

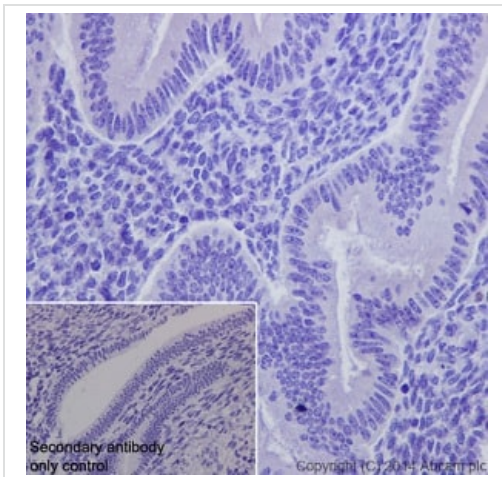
Perform heat mediated antigen retrieval with Tris/EDTA buffer pH 9.0 before commencing with IHC staining protocol.



Immunohistochemistry (Formalin/PFA-fixed paraffin-embedded sections) - Anti-Loricrin antibody [EPR7149(2)] - C-terminal (ab198994)

Immunohistochemical analysis of paraffin-embedded rat skin tissue sections labeling Loricrin with ab198994 at a 1/500 dilution. Goat anti-rabbit IgG H&L (HRP) **ab97051** used as the secondary at a 1/500 dilution. Counterstain hematoxylin.

Perform heat mediated antigen retrieval with Tris/EDTA buffer pH 9.0 before commencing with IHC staining protocol.



Immunohistochemistry (Formalin/PFA-fixed paraffin-embedded sections) - Anti-Loricrin antibody [EPR7149(2)] - C-terminal (ab198994)

Immunohistochemical analysis of paraffin-embedded human uterus tissue sections labeling Loricrin with ab198994 at a 1/500 dilution. Goat anti-rabbit IgG H&L (HRP) **ab97051** used as the secondary at a 1/500 dilution. Counterstain hematoxylin. Used as a negative tissue control.

Perform heat mediated antigen retrieval with Tris/EDTA buffer pH 9.0 before commencing with IHC staining protocol.

### Why choose a recombinant antibody?



**Research with confidence**  
Consistent and reproducible results



**Long-term and scalable supply**  
Recombinant technology



**Success from the first experiment**  
Confirmed specificity



**Ethical standards compliant**  
Animal-free production

Anti-Loricrin antibody [EPR7149(2)] - C-terminal  
(ab198994)

**Please note:** All products are "FOR RESEARCH USE ONLY. NOT FOR USE IN DIAGNOSTIC PROCEDURES"

### Our Abpromise to you: Quality guaranteed and expert technical support

---

- Replacement or refund for products not performing as stated on the datasheet
- Valid for 12 months from date of delivery
- Response to your inquiry within 24 hours
- We provide support in Chinese, English, French, German, Japanese and Spanish
- Extensive multi-media technical resources to help you
- We investigate all quality concerns to ensure our products perform to the highest standards

If the product does not perform as described on this datasheet, we will offer a refund or replacement. For full details of the Abpromise, please visit <https://www.abcam.com/abpromise> or contact our technical team.

### Terms and conditions

---

- Guarantee only valid for products bought direct from Abcam or one of our authorized distributors