

## Product datasheet

# Anti-LPCAT3 antibody ab232958

[2 References](#) [5 Images](#)

### Overview

---

<b>Product name</b>	Anti-LPCAT3 antibody
<b>Description</b>	Rabbit polyclonal to LPCAT3
<b>Host species</b>	Rabbit
<b>Tested applications</b>	<b>Suitable for:</b> WB, IHC-P
<b>Species reactivity</b>	<b>Reacts with:</b> Human
<b>Immunogen</b>	Recombinant fragment (His-tag) corresponding to Human LPCAT3 aa 100-250. Expressed in E.coli. N-terminal tag. Database link: <a href="#">Q6P1A2</a>

 [Run BLAST with](#)

 [Run BLAST with](#)

<b>Positive control</b>	WB: Recombinant human LPCAT3 protein IHC-P: Human kidney, rectum, thyroid cancer and breast cancer tissues.
-------------------------	---

<b>General notes</b>	<p>The Life Science industry has been in the grips of a reproducibility crisis for a number of years. Abcam is leading the way in addressing this with our range of recombinant monoclonal antibodies and knockout edited cell lines for gold-standard validation. Please check that this product meets your needs before purchasing.</p> <p>If you have any questions, special requirements or concerns, please send us an inquiry and/or contact our Support team ahead of purchase. Recommended alternatives for this product can be found below, along with publications, customer reviews and Q&amp;As</p>
----------------------	---

### Properties

---

<b>Form</b>	Liquid
<b>Storage instructions</b>	Shipped at 4°C. Store at +4°C short term (1-2 weeks). Upon delivery aliquot. Store at -20°C long term. Avoid freeze / thaw cycle.
<b>Storage buffer</b>	pH: 7.40 Preservative: 0.011% Proclin 300 Constituents: 55.77% Glycerol (glycerin, glycerine), 44.219% PBS
<b>Purity</b>	Protein A purified
<b>Purification notes</b>	Antigen-specific affinity chromatography followed by Protein A affinity chromatography.
<b>Clonality</b>	Polyclonal
<b>Isotype</b>	IgG

## Applications

---

**The Abpromise guarantee** Our **Abpromise guarantee** covers the use of ab232958 in the following tested applications.

The application notes include recommended starting dilutions; optimal dilutions/concentrations should be determined by the end user.

Application	Abreviews	Notes
WB		Use a concentration of 0.5 - 2 µg/ml. Predicted molecular weight: 56 kDa.
IHC-P		Use a concentration of 5 - 20 µg/ml.

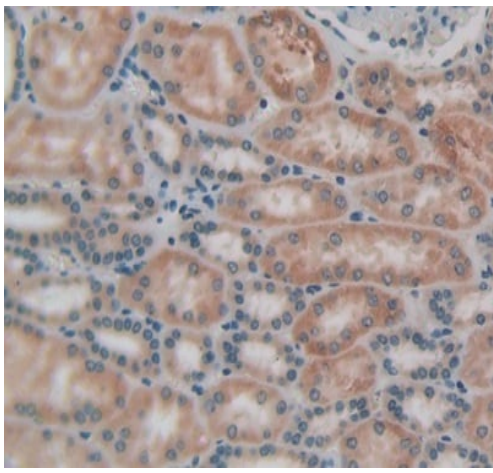
## Target

---

<b>Function</b>	Acyltransferase which mediates the conversion of lysophosphatidylcholine (1-acyl-sn-glycero-3-phosphocholine or LPC) into phosphatidylcholine (1,2-diacyl-sn-glycero-3-phosphocholine or PC) (LPCAT activity). Catalyzes also the conversion of lysophosphatidylserine (1-acyl-2-hydroxy-sn-glycero-3-phospho-L-serine or LPS) into phosphatidylserine (1,2-diacyl-sn-glycero-3-phospho-L-serine or PS) (LPSAT activity). Has also weak lysophosphatidylethanolamine acyltransferase activity (LPEAT activity). Favors polyunsaturated fatty acyl-CoAs as acyl donors compared to saturated fatty acyl-CoAs. Seems to be the major enzyme contributing to LPCAT activity in the liver. Lysophospholipid acyltransferases (LPLATs) catalyze the reacylation step of the phospholipid remodeling pathway also known as the Lands cycle.
<b>Tissue specificity</b>	Highly expressed in liver, pancreas and adipose tissue. Very low expression in skeletal muscle and heart. Detected in neutrophils.
<b>Pathway</b>	Lipid metabolism; phospholipid metabolism.
<b>Sequence similarities</b>	Belongs to the membrane-bound acyltransferase family.
<b>Domain</b>	The di-lysine motif confers endoplasmic reticulum localization.
<b>Cellular localization</b>	Endoplasmic reticulum membrane.

## Images

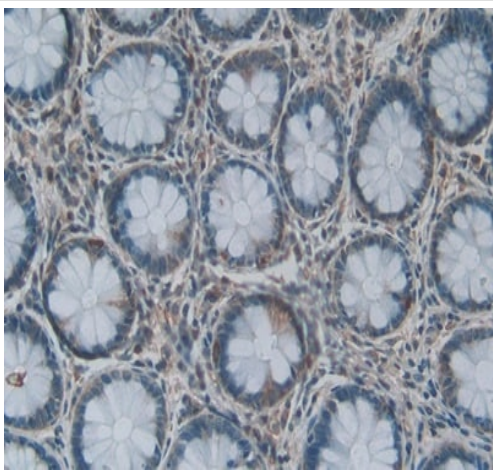
---



Immunohistochemistry (Formalin/PFA-fixed paraffin-embedded sections) - Anti-LPCAT3 antibody (ab232958)

Formalin-fixed, paraffin-embedded human kidney tissue stained for LPCAT3 using ab232958 at 20  $\mu\text{g}/\text{ml}$  in immunohistochemical analysis.

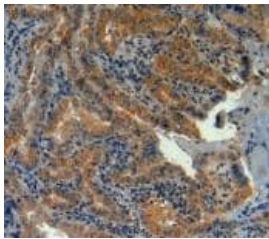
Secondary used: HRP-Linked Goat anti-Rabbit IgG polyclonal at 2  $\mu\text{g}/\text{ml}$ . DAB staining.



Immunohistochemistry (Formalin/PFA-fixed paraffin-embedded sections) - Anti-LPCAT3 antibody (ab232958)

Formalin-fixed, paraffin-embedded human rectum tissue stained for LPCAT3 using ab232958 at 20  $\mu\text{g}/\text{ml}$  in immunohistochemical analysis.

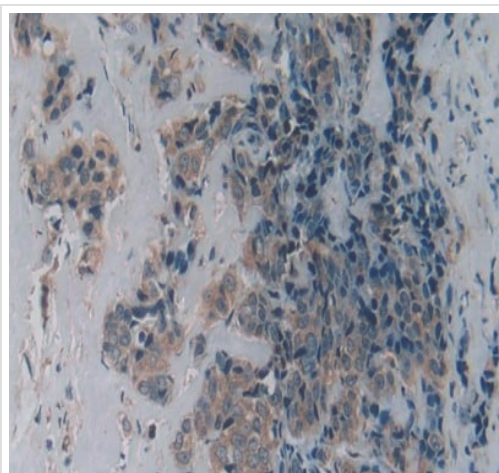
Secondary used: HRP-Linked Goat anti-Rabbit IgG polyclonal at 2  $\mu\text{g}/\text{ml}$ . DAB staining.



Immunohistochemistry (Formalin/PFA-fixed paraffin-embedded sections) - Anti-LPCAT3 antibody (ab232958)

Formalin-fixed, paraffin-embedded human thyroid cancer tissue stained for LPCAT3 using ab232958 at 20  $\mu\text{g}/\text{ml}$  in immunohistochemical analysis.

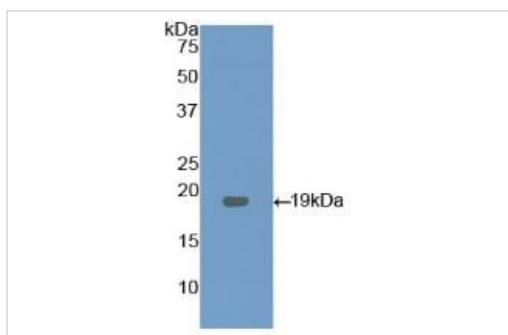
Secondary used: HRP-Linked Goat anti-Rabbit IgG polyclonal at 2  $\mu\text{g}/\text{ml}$ . DAB staining.



Immunohistochemistry (Formalin/PFA-fixed paraffin-embedded sections) - Anti-LPCAT3 antibody (ab232958)

Formalin-fixed, paraffin-embedded human breast cancer tissue stained for LPCAT3 using ab232958 at 20 µg/ml in immunohistochemical analysis.

Secondary used: HRP-Linked Goat anti-Rabbit IgG polyclonal at 2 µg/ml. DAB staining.



Western blot - Anti-LPCAT3 antibody (ab232958)

Anti-LPCAT3 antibody (ab232958) at 2 µg/ml + Recombinant human LPCAT3 protein

**Predicted band size: 56 kDa**

**Please note:** All products are "FOR RESEARCH USE ONLY. NOT FOR USE IN DIAGNOSTIC PROCEDURES"

### Our Abpromise to you: Quality guaranteed and expert technical support

- Replacement or refund for products not performing as stated on the datasheet
- Valid for 12 months from date of delivery
- Response to your inquiry within 24 hours
- We provide support in Chinese, English, French, German, Japanese and Spanish
- Extensive multi-media technical resources to help you
- We investigate all quality concerns to ensure our products perform to the highest standards

If the product does not perform as described on this datasheet, we will offer a refund or replacement. For full details of the Abpromise, please visit <https://www.abcam.com/abpromise> or contact our technical team.

### Terms and conditions

- Guarantee only valid for products bought direct from Abcam or one of our authorized distributors