

Product datasheet

Anti-LPO antibody [EPR9226(B)] ab166615

Recombinant RabMAb

[2 Images](#)

Overview

Product name	Anti-LPO antibody [EPR9226(B)]
Description	Rabbit monoclonal [EPR9226(B)] to LPO
Host species	Rabbit
Tested applications	Suitable for: WB Unsuitable for: IHC-P or IP
Species reactivity	Reacts with: Human
Immunogen	Synthetic peptide. This information is proprietary to Abcam and/or its suppliers.
Positive control	Human milk lysate.
General notes	<p>This product is a recombinant monoclonal antibody, which offers several advantages including:</p> <ul style="list-style-type: none">- High batch-to-batch consistency and reproducibility- Improved sensitivity and specificity- Long-term security of supply- Animal-free production <p>For more information see here.</p> <p>Our RabMAb[®] technology is a patented hybridoma-based technology for making rabbit monoclonal antibodies. For details on our patents, please refer to RabMAb[®] patents.</p> <p>Mouse, Rat: We have preliminary internal testing data to indicate this antibody may not react with these species. Please contact us for more information.</p>

Properties

Form	Liquid
Storage instructions	Shipped at 4°C. Store at -20°C.
Storage buffer	pH: 7.2 Preservative: 0.01% Sodium azide Constituents: 9% PBS, 40% Glycerol (glycerin, glycerine), 0.05% BSA, 50% Tissue culture supernatant
Purity	Tissue culture supernatant
Clonality	Monoclonal

Clone number EPR9226(B)
Isotype IgG

Applications

The Abpromise guarantee Our **Abpromise guarantee** covers the use of ab166615 in the following tested applications. The application notes include recommended starting dilutions; optimal dilutions/concentrations should be determined by the end user.

Application	Abreviews	Notes
WB		1/5000 - 1/10000. Predicted molecular weight: 80 kDa.

Application notes Is unsuitable for IHC-P or IP.

Target

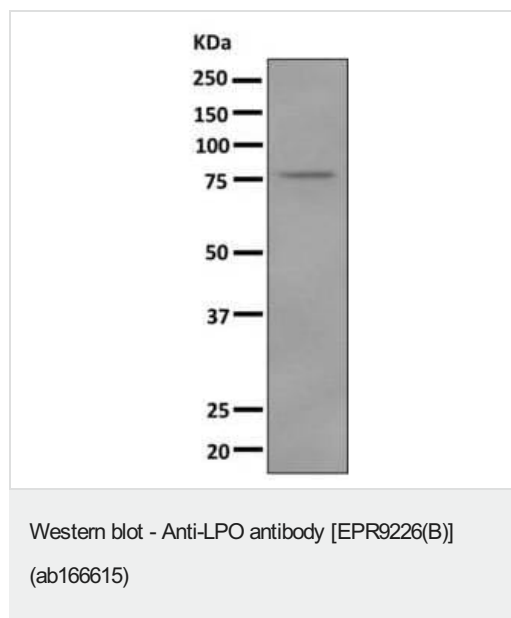
Function Antimicrobial agent which utilizes hydrogen peroxide and thiocyanate (SCN) to generate the antimicrobial substance hypothiocyanous acid (HOSCN) (By similarity). May contribute to airway host defense against infection.

Tissue specificity Mammary gland; milk and salivary gland. Found in bronchial submucosal glands.

Sequence similarities Belongs to the peroxidase family. XPO subfamily.

Cellular localization Secreted.

Images



Anti-LPO antibody [EPR9226(B)] (ab166615) at 1/5000 dilution + Human milk lysate at 10 µg

Secondary

Lactoperoxidase at 1/2000 dilution

Predicted band size: 80 kDa

Why choose a recombinant antibody?



Research with confidence
Consistent and reproducible results



Long-term and scalable supply
Recombinant technology



Success from the first experiment
Confirmed specificity



Ethical standards compliant
Animal-free production

Anti-LPO antibody [EPR9226(B)] (ab166615)

Please note: All products are "FOR RESEARCH USE ONLY. NOT FOR USE IN DIAGNOSTIC PROCEDURES"

Our Abpromise to you: Quality guaranteed and expert technical support

- Replacement or refund for products not performing as stated on the datasheet
- Valid for 12 months from date of delivery
- Response to your inquiry within 24 hours
- We provide support in Chinese, English, French, German, Japanese and Spanish
- Extensive multi-media technical resources to help you
- We investigate all quality concerns to ensure our products perform to the highest standards

If the product does not perform as described on this datasheet, we will offer a refund or replacement. For full details of the Abpromise, please visit <https://www.abcam.com/abpromise> or contact our technical team.

Terms and conditions

- Guarantee only valid for products bought direct from Abcam or one of our authorized distributors