


Anti-LRAT antibody ab137304

[1 Abreviews](#) [2 References](#) [1 Image](#)

Overview

Product name	Anti-LRAT antibody
Description	Rabbit polyclonal to LRAT
Host species	Rabbit
Tested applications	Suitable for: WB
Species reactivity	Reacts with: Human Predicted to work with: Mouse, Rat 
Immunogen	Synthetic peptide corresponding to amino acids within an internal region of Human LRAT.
Positive control	COLO205 cell lysates
General notes	<p>The Life Science industry has been in the grips of a reproducibility crisis for a number of years. Abcam is leading the way in addressing this with our range of recombinant monoclonal antibodies and knockout edited cell lines for gold-standard validation. Please check that this product meets your needs before purchasing.</p> <p>If you have any questions, special requirements or concerns, please send us an inquiry and/or contact our Support team ahead of purchase. Recommended alternatives for this product can be found below, along with publications, customer reviews and Q&As</p>

Properties

Form	Liquid
Storage instructions	Shipped at 4°C. Store at -20°C.
Storage buffer	pH: 7.40 Preservative: 0.02% Sodium azide Constituents: 49% PBS, 0.88% Sodium chloride, 50% Glycerol (glycerin, glycerine) PBS is without Mg ²⁺ and Ca ²⁺
Purity	Immunogen affinity purified
Purification notes	ab137304 was affinity purified from Rabbit antiserum by affinity chromatography using epitope specific peptide.
Clonality	Polyclonal
Isotype	IgG

Applications

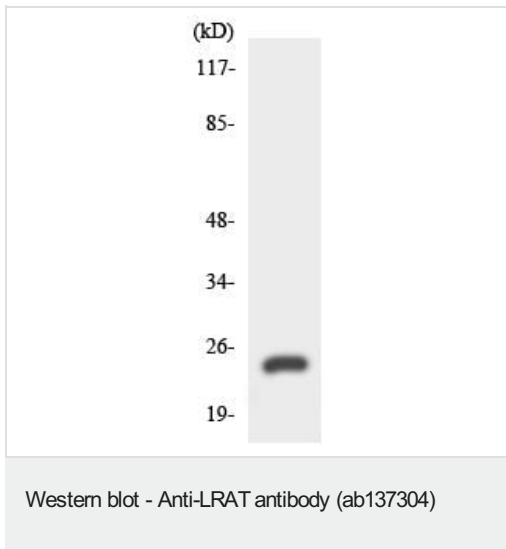
The Abpromise guarantee Our **Abpromise guarantee** covers the use of ab137304 in the following tested applications. The application notes include recommended starting dilutions; optimal dilutions/concentrations should be determined by the end user.

Application	Abreviews	Notes
WB		1/500 - 1/1000. Predicted molecular weight: 26 kDa.

Target

Function	Transfers the acyl group from the sn-1 position of phosphatidylcholine to all-trans retinol, producing all-trans retinyl esters. Retinyl esters are storage forms of vitamin A. LRAT plays a critical role in vision. It provides the all-trans retinyl ester substrates for the isomerohydrolase which processes the esters into 11-cis-retinol in the retinal pigment epithelium; due to a membrane-associated alcohol dehydrogenase, 11 cis-retinol is oxidized and converted into 11-cis-retinaldehyde which is the chromophore for rhodopsin and the cone photopigments.
Tissue specificity	Hepatic stellate cells and endothelial cells (at protein level). Found at high levels in testis and liver, followed by retinal pigment epithelium, small intestine, prostate, pancreas and colon. Low expression observed in brain. In fetal tissues, expressed in retinal pigment epithelium and liver, and barely in the brain.
Pathway	Cofactor metabolism; retinol metabolism.
Involvement in disease	Defects in LRAT are a cause of Leber congenital amaurosis type 14 (LCA14) [MIM:613341]. It is a severe dystrophy of the retina, typically becoming evident in the first years of life. Visual function is usually poor and often accompanied by nystagmus, sluggish or near-absent pupillary responses, photophobia, high hyperopia and keratoconus.
Sequence similarities	Belongs to the H-rev107 family.
Cellular localization	Endoplasmic reticulum membrane. Rough endoplasmic reticulum. Endosome > multivesicular body. Cytoplasm > perinuclear region. Present in the rough endoplasmic reticulum and multivesicular body in hepatic stellate cells. Present in the rough endoplasmic reticulum and perinuclear region in endothelial cells.

Images



Anti-LRAT antibody (ab137304) at 1/500 dilution + COLO205 cell lysate at 30 μ g

Predicted band size: 26 kDa

Please note: All products are "FOR RESEARCH USE ONLY. NOT FOR USE IN DIAGNOSTIC PROCEDURES"

Our Abpromise to you: Quality guaranteed and expert technical support

- Replacement or refund for products not performing as stated on the datasheet
- Valid for 12 months from date of delivery
- Response to your inquiry within 24 hours
- We provide support in Chinese, English, French, German, Japanese and Spanish
- Extensive multi-media technical resources to help you
- We investigate all quality concerns to ensure our products perform to the highest standards

If the product does not perform as described on this datasheet, we will offer a refund or replacement. For full details of the Abpromise, please visit <https://www.abcam.com/abpromise> or contact our technical team.

Terms and conditions

- Guarantee only valid for products bought direct from Abcam or one of our authorized distributors