

Anti-LRBA/BGL antibody ab121765

[1 References](#) [1 Image](#)

Overview

| | |
|----------------------------|---|
| Product name | Anti-LRBA/BGL antibody |
| Description | Rabbit polyclonal to LRBA/BGL |
| Host species | Rabbit |
| Tested applications | Suitable for: IHC-P |
| Species reactivity | Reacts with: Human |
| Immunogen | Recombinant fragment corresponding to Human LRBA/BGL aa 907-1038. |
| Positive control | Human rectum tissue. |
| General notes | <p>The Life Science industry has been in the grips of a reproducibility crisis for a number of years. Abcam is leading the way in addressing this with our range of recombinant monoclonal antibodies and knockout edited cell lines for gold-standard validation. Please check that this product meets your needs before purchasing.</p> <p>If you have any questions, special requirements or concerns, please send us an inquiry and/or contact our Support team ahead of purchase. Recommended alternatives for this product can be found below, along with publications, customer reviews and Q&As</p> |

Properties

| | |
|-----------------------------|---|
| Form | Liquid |
| Storage instructions | Shipped at 4°C. Upon delivery aliquot and store at -20°C. Avoid freeze / thaw cycles. |
| Storage buffer | pH: 7.20 Preservative: 0.02% Sodium azide Constituents: 40% Glycerol (glycerin, glycerine), 59% PBS |
| Purity | Immunogen affinity purified |
| Clonality | Polyclonal |
| Isotype | IgG |

Applications

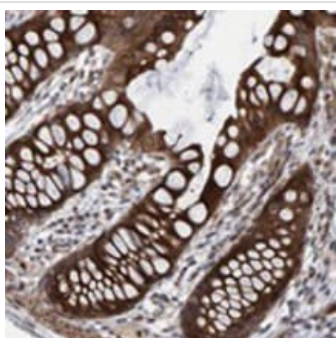
The Abpromise guarantee Our **Abpromise guarantee** covers the use of ab121765 in the following tested applications. The application notes include recommended starting dilutions; optimal dilutions/concentrations should be determined by the end user.

| Application | Abreviews | Notes |
|-------------|-----------|---|
| IHC-P | | 1/1000 - 1/2500. Perform heat mediated antigen retrieval with citrate buffer pH 6 before commencing with IHC staining protocol. |

Target

| | |
|---|--|
| Function | May be involved in coupling signal transduction and vesicle trafficking to enable polarized secretion and/or membrane deposition of immune effector molecules. |
| Tissue specificity | Ubiquitous. |
| Sequence similarities | Contains 1 BEACH domain. Contains 6 WD repeats. |
| Post-translational modifications | Phosphorylated upon DNA damage, probably by ATM or ATR. |
| Cellular localization | Cell membrane. Endoplasmic reticulum. Golgi apparatus > trans-Golgi network. Lysosome. |

Images



ab121765 at 1/200 dilution staining LRBA/BGL in paraffin embedded Human rectum tissue by Immunohistochemistry.

Immunohistochemistry (Formalin/PFA-fixed paraffin-embedded sections) - Anti-LRBA/BGL antibody (ab121765)

Please note: All products are "FOR RESEARCH USE ONLY. NOT FOR USE IN DIAGNOSTIC PROCEDURES"

Our Abpromise to you: Quality guaranteed and expert technical support

- Replacement or refund for products not performing as stated on the datasheet
- Valid for 12 months from date of delivery
- Response to your inquiry within 24 hours
- We provide support in Chinese, English, French, German, Japanese and Spanish
- Extensive multi-media technical resources to help you
- We investigate all quality concerns to ensure our products perform to the highest standards

If the product does not perform as described on this datasheet, we will offer a refund or replacement. For full details of the Abpromise, please visit <https://www.abcam.com/abpromise> or contact our technical team.

Terms and conditions

- Guarantee only valid for products bought direct from Abcam or one of our authorized distributors