

Product datasheet

Anti-LRCH2 antibody ab121182

3 Images

Overview

Product name	Anti-LRCH2 antibody
Description	Rabbit polyclonal to LRCH2
Host species	Rabbit
Tested applications	Suitable for: ICC/IF, IHC-P, WB
Species reactivity	Reacts with: Human
Immunogen	Recombinant fragment, corresponding to amino acids 348-489 of Human LRCH2 (Q5VUJ6).
Positive control	RT4 and U-251 MG cell lysates; Human stomach tissue.
General notes	<p>The Life Science industry has been in the grips of a reproducibility crisis for a number of years. Abcam is leading the way in addressing this with our range of recombinant monoclonal antibodies and knockout edited cell lines for gold-standard validation. Please check that this product meets your needs before purchasing.</p> <p>If you have any questions, special requirements or concerns, please send us an inquiry and/or contact our Support team ahead of purchase. Recommended alternatives for this product can be found below, along with publications, customer reviews and Q&As</p>

Properties

Form	Liquid
Storage instructions	Shipped at 4°C. Upon delivery aliquot and store at -20°C. Avoid freeze / thaw cycles.
Storage buffer	<p>pH: 7.20</p> <p>Preservative: 0.02% Sodium azide</p> <p>Constituents: 59% PBS, 40% Glycerol (glycerin, glycerine)</p>
Purity	Immunogen affinity purified
Clonality	Polyclonal
Isotype	IgG

Applications

The Abpromise guarantee Our **Abpromise guarantee** covers the use of ab121182 in the following tested applications. The application notes include recommended starting dilutions; optimal dilutions/concentrations should be determined by the end user.

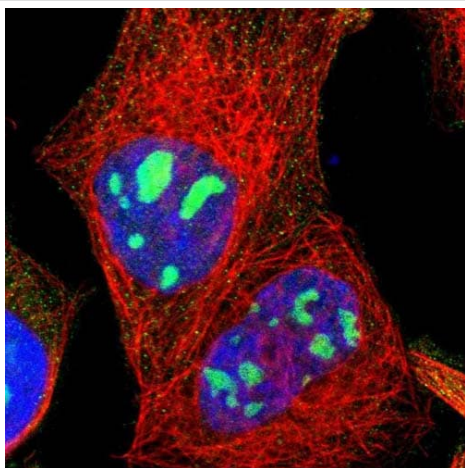
Application	Abreviews	Notes
ICC/IF		Use a concentration of 0.25 - 2 µg/ml.
IHC-P		1/350. Perform heat mediated antigen retrieval via the pressure cooker method before commencing with IHC staining protocol.
WB		1/250 - 1/500.

Target

Sequence similarities

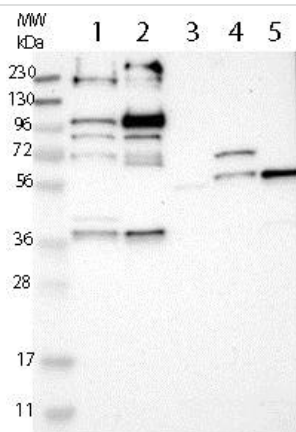
Contains 1 CH (calponin-homology) domain.
Contains 9 LRR (leucine-rich) repeats.

Images



Immunocytochemistry/ Immunofluorescence - Anti-LRCH2 antibody (ab121182)

Immunofluorescent staining of Human cell line A-431 shows positivity in nucleoli. Recommended concentration of ab121182 1-4 µg/ml. Cells treated with PFA/Triton X-100.



Western blot - Anti-LRCH2 antibody (ab121182)

All lanes : Anti-LRCH2 antibody (ab121182) at 1/250 dilution

Lane 1 : RT4 cell lysate

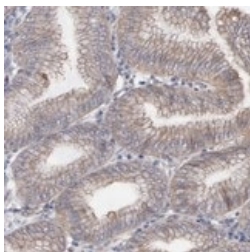
Lane 2 : U-251 MG cell lysate

Lane 3 : Human Plasma lysate

Lane 4 : Human Liver lysate

Lane 5 : Human Tonsil lysate

Developed using the ECL technique.



ab121182 at 1/350 dilution staining LRCH2 in Paraffin-embedded Human stomach tissue by Immunohistochemistry.

Immunohistochemistry (Formalin/PFA-fixed paraffin-embedded sections) - Anti-LRCH2 antibody (ab121182)

Please note: All products are "FOR RESEARCH USE ONLY. NOT FOR USE IN DIAGNOSTIC PROCEDURES"

Our Abpromise to you: Quality guaranteed and expert technical support

- Replacement or refund for products not performing as stated on the datasheet
- Valid for 12 months from date of delivery
- Response to your inquiry within 24 hours
- We provide support in Chinese, English, French, German, Japanese and Spanish
- Extensive multi-media technical resources to help you
- We investigate all quality concerns to ensure our products perform to the highest standards

If the product does not perform as described on this datasheet, we will offer a refund or replacement. For full details of the Abpromise, please visit <https://www.abcam.com/abpromise> or contact our technical team.

Terms and conditions

- Guarantee only valid for products bought direct from Abcam or one of our authorized distributors