

## Product datasheet

# Anti-LRFN5 antibody ab106370

[1 References](#) [2 Images](#)

### Overview

---

<b>Product name</b>	Anti-LRFN5 antibody
<b>Description</b>	Rabbit polyclonal to LRFN5
<b>Host species</b>	Rabbit
<b>Tested applications</b>	<b>Suitable for:</b> IHC-P, WB
<b>Species reactivity</b>	<b>Reacts with:</b> Mouse
<b>Immunogen</b>	Synthetic peptide corresponding to Human LRFN5 (C terminal). 16 amino acid peptide Database link: <a href="#">Q96NI6</a>
<b>Positive control</b>	EL4 cell lysate, Mouse brain tissue.
<b>General notes</b>	<p>The Life Science industry has been in the grips of a reproducibility crisis for a number of years. Abcam is leading the way in addressing this with our range of recombinant monoclonal antibodies and knockout edited cell lines for gold-standard validation. Please check that this product meets your needs before purchasing.</p> <p>If you have any questions, special requirements or concerns, please send us an inquiry and/or contact our Support team ahead of purchase. Recommended alternatives for this product can be found below, along with publications, customer reviews and Q&amp;As</p>

### Properties

---

<b>Form</b>	Liquid
<b>Storage instructions</b>	Shipped at 4°C. Store at 4°C (stable for up to 12 months).
<b>Storage buffer</b>	pH: 7.2 Preservative: 0.02% Sodium azide Constituent: PBS
<b>Purity</b>	Immunogen affinity purified
<b>Clonality</b>	Polyclonal
<b>Isotype</b>	IgG

### Applications

---

**The Abpromise guarantee** Our **Abpromise guarantee** covers the use of ab106370 in the following tested applications.

The application notes include recommended starting dilutions; optimal dilutions/concentrations should be determined by the end user.

Application	Abreviews	Notes
IHC-P		Use a concentration of 5 µg/ml. Perform heat mediated antigen retrieval via the microwave method before commencing with IHC staining protocol.
WB		Use a concentration of 0.5 - 1 µg/ml. Predicted molecular weight: 79 kDa.

## Target

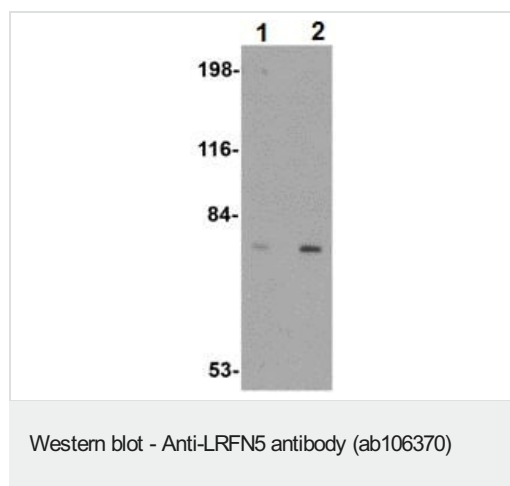
**Function** Cell adhesion molecule that mediates homophilic cell-cell adhesion in a Ca(2+)-independent manner. Promotes neurite outgrowth in hippocampal neurons.

**Sequence similarities** Belongs to the LRFN family.  
Contains 1 fibronectin type-III domain.  
Contains 1 Ig-like (immunoglobulin-like) domain.  
Contains 7 LRR (leucine-rich) repeats.  
Contains 1 LRRCT domain.  
Contains 1 LRRNT domain.

**Domain** Lacks a cytoplasmic PDZ-binding motif, which has been implicated in function of related LRFN proteins.

**Cellular localization** Membrane.

## Images



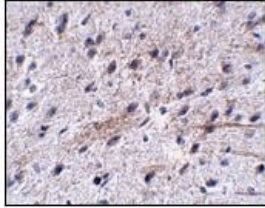
**Lane 1** : Anti-LRFN5 antibody (ab106370) at 0.5 µg/ml

**Lane 2** : Anti-LRFN5 antibody (ab106370) at 1 µg/ml

**All lanes** : EL4 cell lysate

Lysates/proteins at 15 µg per lane.

**Predicted band size:** 79 kDa



ab106370, at 5 ug/ml, staining LRFN5 in Mouse brain tissue by immunohistochemistry.

Immunohistochemistry (Formalin/PFA-fixed paraffin-embedded sections) - Anti-LRFN5 antibody (ab106370)

**Please note:** All products are "FOR RESEARCH USE ONLY. NOT FOR USE IN DIAGNOSTIC PROCEDURES"

### **Our Abpromise to you: Quality guaranteed and expert technical support**

---

- Replacement or refund for products not performing as stated on the datasheet
- Valid for 12 months from date of delivery
- Response to your inquiry within 24 hours
- We provide support in Chinese, English, French, German, Japanese and Spanish
- Extensive multi-media technical resources to help you
- We investigate all quality concerns to ensure our products perform to the highest standards

If the product does not perform as described on this datasheet, we will offer a refund or replacement. For full details of the Abpromise, please visit <https://www.abcam.com/abpromise> or contact our technical team.

### **Terms and conditions**

---

- Guarantee only valid for products bought direct from Abcam or one of our authorized distributors