

## Product datasheet

### Anti-LRG1/LRG antibody [EPR12363] ab170953

Recombinant RabMAb

[2 References](#) [3 Images](#)

#### Overview

<b>Product name</b>	Anti-LRG1/LRG antibody [EPR12363]
<b>Description</b>	Rabbit monoclonal [EPR12363] to LRG1/LRG
<b>Host species</b>	Rabbit
<b>Tested applications</b>	<b>Suitable for:</b> WB, IP <b>Unsuitable for:</b> ICC/IF or IHC-P
<b>Species reactivity</b>	<b>Reacts with:</b> Human <b>Does not react with:</b> Mouse, Rat
<b>Immunogen</b>	Synthetic peptide within Human LRG1/LRG aa 1-100. The exact sequence is proprietary. Database link: <a href="#">P02750</a>
<b>Positive control</b>	WB: Human plasma.
<b>General notes</b>	This product is a recombinant monoclonal antibody, which offers several advantages including: <ul style="list-style-type: none"> <li>- High batch-to-batch consistency and reproducibility</li> <li>- Improved sensitivity and specificity</li> <li>- Long-term security of supply</li> <li>- Animal-free production</li> </ul> For more information <a href="#">see here</a> . Our RabMAb <sup>®</sup> technology is a patented hybridoma-based technology for making rabbit monoclonal antibodies. For details on our patents, please refer to <a href="#">RabMAb<sup>®</sup> patents</a> .

#### Properties

<b>Form</b>	Liquid
<b>Storage instructions</b>	Shipped at 4°C. Store at +4°C short term (1-2 weeks). Upon delivery aliquot. Store at -20°C long term. Avoid freeze / thaw cycle.
<b>Storage buffer</b>	pH: 7.2 Preservative: 0.01% Sodium azide Constituents: 9% PBS, 40% Glycerol (glycerin, glycerine), 0.05% BSA, 50% Tissue culture supernatant
<b>Purity</b>	Tissue culture supernatant
<b>Clonality</b>	Monoclonal

**Clone number**                      EPR12363

**Isotype**                              IgG

## Applications

**The Abpromise guarantee**              Our **Abpromise guarantee** covers the use of ab170953 in the following tested applications. The application notes include recommended starting dilutions; optimal dilutions/concentrations should be determined by the end user.

Application	Abreviews	Notes
WB		1/1000 - 1/10000. Predicted molecular weight: 38 kDa.
IP		1/10 - 1/100.

**Application notes**                      Is unsuitable for ICC/IF or IHC-P.

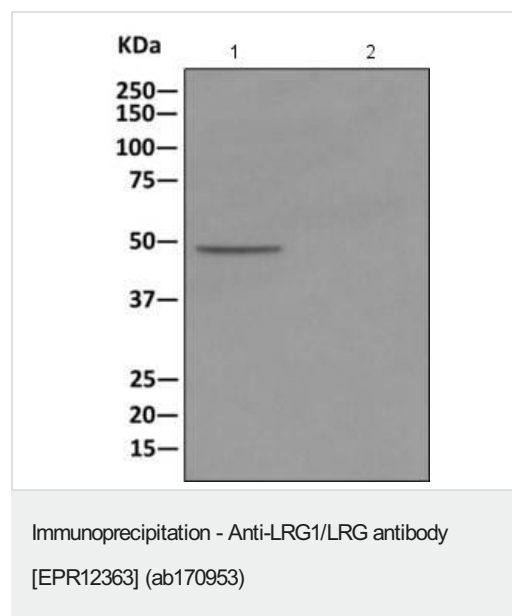
## Target

**Tissue specificity**                      Plasma.

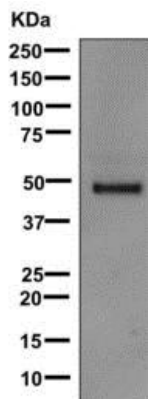
**Sequence similarities**                      Contains 8 LRR (leucine-rich) repeats.  
Contains 1 LRRCT domain.

**Cellular localization**                      Secreted.

## Images



Western blot analysis of immunoprecipitation pellet from either 1) Human plasma lysate, or 2) 1xPBS (negative control); showing LRG1/LRG, using ab170953 at 1/10 dilution and HRP-conjugated anti-rabbit IgG preferentially detecting the non-reduced form of rabbit IgG.



Western blot - Anti-LRG1/LRG antibody [EPR12363] (ab170953)

Anti-LRG1/LRG antibody [EPR12363] (ab170953) at 1/1000 dilution + Human plasma at 10 µg

### Secondary

Goat anti-rabbit HRP at 1/2000 dilution

Developed using the ECL technique.

**Predicted band size:** 38 kDa

### Why choose a recombinant antibody?



**Research with confidence**  
Consistent and reproducible results



**Long-term and scalable supply**  
Recombinant technology



**Success from the first experiment**  
Confirmed specificity



**Ethical standards compliant**  
Animal-free production

Anti-LRG1/LRG antibody [EPR12363] (ab170953)

**Please note:** All products are "FOR RESEARCH USE ONLY. NOT FOR USE IN DIAGNOSTIC PROCEDURES"

### Our Abpromise to you: Quality guaranteed and expert technical support

- Replacement or refund for products not performing as stated on the datasheet
- Valid for 12 months from date of delivery
- Response to your inquiry within 24 hours
- We provide support in Chinese, English, French, German, Japanese and Spanish
- Extensive multi-media technical resources to help you
- We investigate all quality concerns to ensure our products perform to the highest standards

If the product does not perform as described on this datasheet, we will offer a refund or replacement. For full details of the Abpromise,

please visit <https://www.abcam.com/abpromise> or contact our technical team.

#### **Terms and conditions**

---

- Guarantee only valid for products bought direct from Abcam or one of our authorized distributors