

Anti-LRMP antibody [EPR17852] ab202418

Recombinant RabMAb

[2 References](#) [7 Images](#)

Overview

Product name	Anti-LRMP antibody [EPR17852]
Description	Rabbit monoclonal [EPR17852] to LRMP
Host species	Rabbit
Tested applications	Suitable for: WB, IHC-P, ICC/IF, Flow Cyt (Intra)
Species reactivity	Reacts with: Human
Immunogen	Recombinant fragment. This information is proprietary to Abcam and/or its suppliers.
Positive control	WB: Daudi, Ramos and NAMALWA cell lysates; Human tonsil lysate. IHC-P: Human tonsil tissue. ICC/IF: Jurkat and Ramos cells. Flow Cyt (intra): Jurkat
General notes	<p>This product is a recombinant monoclonal antibody, which offers several advantages including:</p> <ul style="list-style-type: none">- High batch-to-batch consistency and reproducibility- Improved sensitivity and specificity- Long-term security of supply- Animal-free production <p>For more information see here.</p> <p>Our RabMAb[®] technology is a patented hybridoma-based technology for making rabbit monoclonal antibodies. For details on our patents, please refer to RabMAb[®] patents.</p>

Properties

Form	Liquid
Storage instructions	Shipped at 4°C. Store at +4°C short term (1-2 weeks). Upon delivery aliquot. Store at -20°C long term. Avoid freeze / thaw cycle.
Storage buffer	pH: 7.2 Preservative: 0.01% Sodium azide Constituents: 59% PBS, 40% Glycerol (glycerin, glycerine), 0.05% BSA
Purity	Protein A purified
Clonality	Monoclonal
Clone number	EPR17852
Isotype	IgG

Applications

The Abpromise guarantee

Our **Abpromise guarantee** covers the use of ab202418 in the following tested applications.

The application notes include recommended starting dilutions; optimal dilutions/concentrations should be determined by the end user.

Application	Abreviews	Notes
WB		1/10000. Detects a band of approximately 62 kDa (predicted molecular weight: 62 kDa).
IHC-P		1/50. Perform heat mediated antigen retrieval with Tris/EDTA buffer pH 9.0 before commencing with IHC staining protocol.
ICC/IF		1/300.
Flow Cyt (Intra)		1/600.

Target

Tissue specificity

Expressed at high levels in pre B-cells, mature B-cells and pre T-cells. Expressed at low levels in mature T-cells and plasma B-cells.

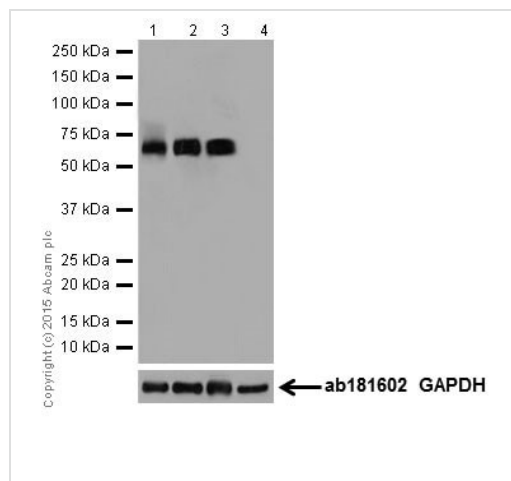
Post-translational modifications

The removal of the C-terminal luminal domain occurs by proteolytic processing.

Cellular localization

Cytoplasm and Endoplasmic reticulum membrane.

Images



Western blot - Anti-LRMP antibody [EPR17852] (ab202418)

All lanes : Anti-LRMP antibody [EPR17852] (ab202418) at 1/10000 dilution

Lane 1 : Daudi (Human Burkitt's lymphoma cell line) whole cell lysate

Lane 2 : NAMALWA (Human Burkitt's lymphoma) whole cell lysate

Lane 3 : Ramos (Human Burkitt's lymphoma cell line) whole cell lysate

Lane 4 : HepG2 (Human liver hepatocellular carcinoma) whole cell lysate

Lysates/proteins at 20 µg per lane.

Secondary

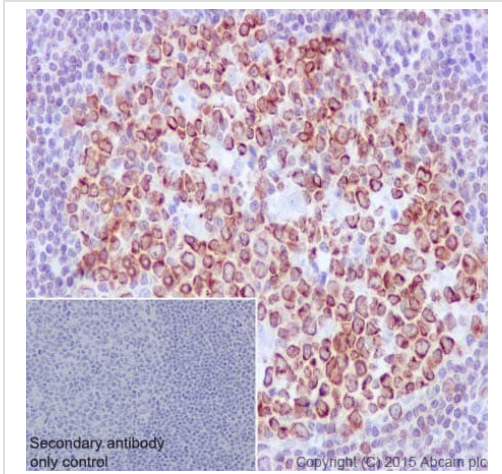
All lanes : Goat Anti-Rabbit IgG, (H+L), Peroxidase conjugated at 1/1000 dilution

Predicted band size: 62 kDa

Observed band size: 62 kDa

Exposure time: 3 minutes

Blocking/Dilution buffer: 5% NFD/MTBST.

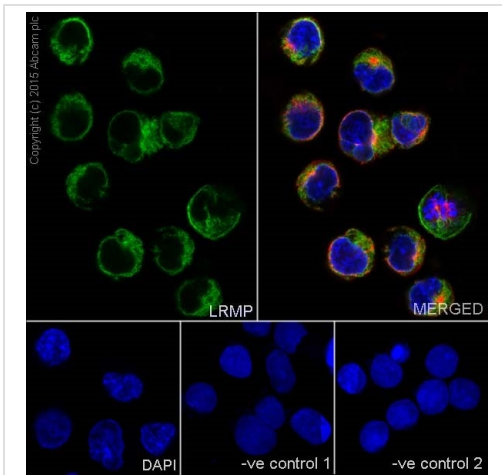


Immunohistochemistry (Formalin/PFA-fixed paraffin-embedded sections) - Anti-LRMP antibody [EPR17852] (ab202418)

Immunohistochemical analysis of paraffin-embedded Human tonsil tissue labeling LRMP with ab202418 at 1/50 dilution, followed by Goat Anti-Rabbit IgG H&L (HRP) (**ab97051**) secondary antibody at 1/500 dilution. Cytoplasm staining on Human tonsil tissue is observed. Counter stained with Hematoxylin.

Secondary antibody only control: Used PBS instead of primary antibody, secondary antibody is Goat Anti-Rabbit IgG H&L (HRP) (**ab97051**) at 1/500 dilution.

Perform heat mediated antigen retrieval with Tris/EDTA buffer pH 9.0 before commencing with IHC staining protocol.



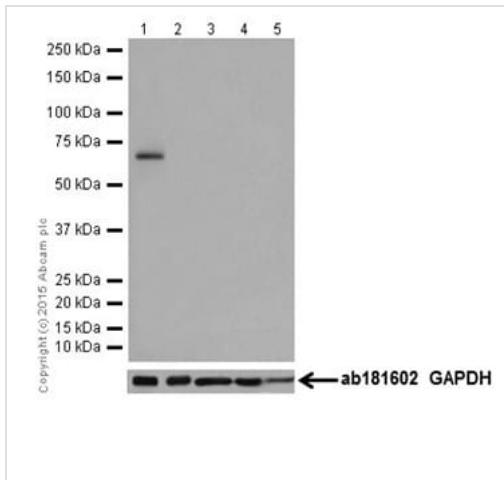
Immunocytochemistry/ Immunofluorescence - Anti-LRMP antibody [EPR17852] (ab202418)

Immunofluorescent analysis of 4% paraformaldehyde-fixed, 0.1% Triton X-100 permeabilized Ramos (Human Burkitt's lymphoma cell line) cells labeling LRMP with ab202418 at 1/300 dilution, followed by Goat anti-rabbit IgG (Alexa Fluor® 488) (**ab150077**) secondary antibody at 1/500 dilution (green). Confocal image showing cytoplasmic staining on Ramos cell line. The nuclear counter stain is DAPI (blue). Tubulin is detected with **ab7291** (anti-Tubulin mouse mAb) at 1/1000 dilution and **ab150120** (AlexaFluor®594 Goat anti-Mouse secondary) at 1/500 dilution (red).

The negative controls are as follows:

-ve control 1: ab202418 at 1/300 dilution followed by **ab150120** (AlexaFluor®594 Goat anti-Mouse secondary) at 1/500 dilution.

-ve control 2: **ab7291** (anti-Tubulin mouse mAb) at 1/1000 dilution followed by **ab150077** (Alexa Fluor®488 Goat Anti-Rabbit IgG H&L) at 1/500 dilution.



Western blot - Anti-LRMP antibody [EPR17852] (ab202418)

All lanes : Anti-LRMP antibody [EPR17852] (ab202418) at 1/10000 dilution

Lane 1 : Human tonsil lysate

Lane 2 : Human fetal brain tissue lysate

Lane 3 : Human fetal heart tissue lysate

Lane 4 : Human fetal kidney tissue lysate

Lane 5 : Human fetal spleen tissue lysate

Lysates/proteins at 10 µg per lane.

Secondary

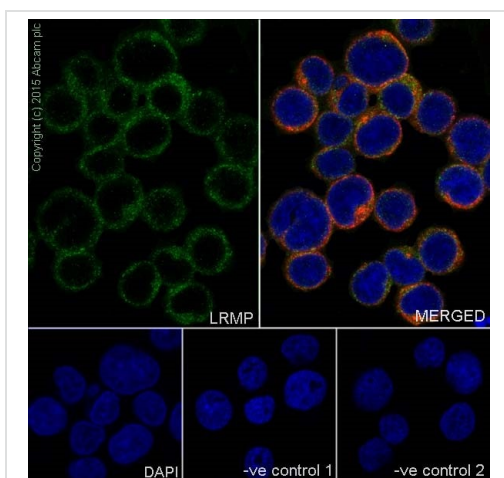
All lanes : Anti-Rabbit IgG (HRP), specific to the non-reduced form of IgG at 1/1000 dilution

Predicted band size: 62 kDa

Observed band size: 62 kDa

Exposure time: 3 minutes

Blocking/Dilution buffer: 5% NFDM/TBST.



Immunocytochemistry/ Immunofluorescence - Anti-LRMP antibody [EPR17852] (ab202418)

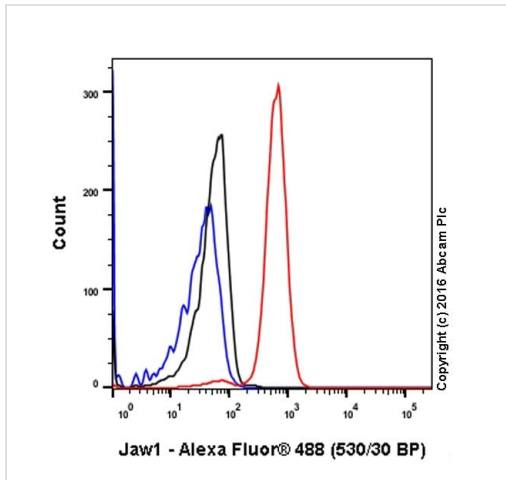
Immunofluorescent analysis of 4% paraformaldehyde-fixed, 0.1% Triton X-100 permeabilized Jurkat (Human T cell leukemia cells from peripheral blood) cells labeling LRMP with ab202418 at 1/300 dilution, followed by Goat anti-rabbit IgG (Alexa Fluor® 488) (**ab150077**) secondary antibody at 1/500 dilution (green). Confocal image showing cytoplasmic staining on Jurkat cell line. The nuclear counter stain is DAPI (blue). Tubulin is detected with **ab7291** (anti-Tubulin mouse mAb) at 1/1000 dilution and **ab150120** (AlexaFluor®594 Goat anti-Mouse secondary) at 1/500 dilution (red).

The negative controls are as follows:

-ve control 1: ab202418 at 1/300 dilution followed by **ab150120** (AlexaFluor®594 Goat anti-Mouse secondary) at 1/500 dilution.

-ve control 2: **ab7291** (anti-Tubulin mouse mAb) at 1/1000 dilution followed by **ab150077** (Alexa Fluor®488 Goat Anti-Rabbit IgG





H&L) at 1/500 dilution.



Intracellular Flow Cytometry analysis of Jurkat cells labelling LRMP (red) with purified ab202418 at dilution of 1/600. The secondary antibody used was Alexa Fluor® 488 goat-anti-rabbit IgG (1/2000). Cells were fixed with 4% paraformaldehyde and permeabilised with 90% methanol. Isotype control antibody used was Rabbit monoclonal IgG (black). The blue line shows cells without incubation with primary antibody and secondary antibody.

Flow Cytometry (Intracellular) - Anti-LRMP antibody [EPR17852] (ab202418)

Why choose a recombinant antibody?

 <p>Research with confidence Consistent and reproducible results</p>	 <p>Long-term and scalable supply Recombinant technology</p>
 <p>Success from the first experiment Confirmed specificity</p>	 <p>Ethical standards compliant Animal-free production</p>

Anti-LRMP antibody [EPR17852] (ab202418)

Please note: All products are "FOR RESEARCH USE ONLY. NOT FOR USE IN DIAGNOSTIC PROCEDURES"

Our Abpromise to you: Quality guaranteed and expert technical support

- Replacement or refund for products not performing as stated on the datasheet
- Valid for 12 months from date of delivery
- Response to your inquiry within 24 hours
- We provide support in Chinese, English, French, German, Japanese and Spanish
- Extensive multi-media technical resources to help you
- We investigate all quality concerns to ensure our products perform to the highest standards

If the product does not perform as described on this datasheet, we will offer a refund or replacement. For full details of the Abpromise, please visit <https://www.abcam.com/abpromise> or contact our technical team.

Terms and conditions

- Guarantee only valid for products bought direct from Abcam or one of our authorized distributors