

## Product datasheet

### Anti-Lrp2 / Megalin antibody [CD7D5] ab184676

★★★★★ [6 Abreviews](#) [9 References](#) [2 Images](#)

#### Overview

<b>Product name</b>	Anti-Lrp2 / Megalin antibody [CD7D5]
<b>Description</b>	Mouse monoclonal [CD7D5] to Lrp2 / Megalin
<b>Host species</b>	Mouse
<b>Tested applications</b>	<b>Suitable for:</b> IHC-P
<b>Species reactivity</b>	<b>Reacts with:</b> Mouse
<b>Immunogen</b>	Full length protein corresponding to Human Lrp2/ Megalin. Database link: <a href="#">P98164</a>
<b>Positive control</b>	Mouse kidney tissue.
<b>General notes</b>	<p>The Life Science industry has been in the grips of a reproducibility crisis for a number of years. Abcam is leading the way in addressing this with our range of recombinant monoclonal antibodies and knockout edited cell lines for gold-standard validation. Please check that this product meets your needs before purchasing.</p> <p>If you have any questions, special requirements or concerns, please send us an inquiry and/or contact our Support team ahead of purchase. Recommended alternatives for this product can be found below, along with publications, customer reviews and Q&amp;As</p>

#### Properties

<b>Form</b>	Liquid
<b>Storage instructions</b>	Shipped at 4°C. Store at +4°C short term (1-2 weeks). Upon delivery aliquot. Store at -20°C long term. Avoid freeze / thaw cycle.
<b>Storage buffer</b>	Constituent: 100% PBS
<b>Purity</b>	Protein G purified
<b>Clonality</b>	Monoclonal
<b>Clone number</b>	CD7D5
<b>Isotype</b>	IgG1

#### Applications

**The Abpromise guarantee** Our [Abpromise guarantee](#) covers the use of ab184676 in the following tested applications.

The application notes include recommended starting dilutions; optimal dilutions/concentrations should be determined by the end user.

Application	Abreviews	Notes
IHC-P	★★★★★ (4)	1/100 - 1/200. Perform enzymatic antigen retrieval before commencing with IHC staining protocol.

## Target

### Function

Acts together with cubilin to mediate HDL endocytosis (By similarity). May participate in regulation of parathyroid-hormone and para-thyroid-hormone-related protein release.

### Tissue specificity

Absorptive epithelia, including renal proximal tubules.

### Involvement in disease

Defects in LRP2 are the cause of Donnai-Barrow syndrome (DBS) [MIM:222448]; also known as faciooculoacousticorenal syndrome (FOAR syndrome). DBS is a rare autosomal recessive disorder characterized by major malformations including agenesis of the corpus callosum, congenital diaphragmatic hernia, facial dysmorphism, ocular anomalies, sensorineural hearing loss and developmental delay. The FOAR syndrome was first described as comprising facial anomalies, ocular anomalies, sensorineural hearing loss, and proteinuria. DBS and FOAR were first described as distinct disorders but the classic distinguishing features between the 2 disorders were presence of proteinuria and absence of diaphragmatic hernia and corpus callosum anomalies in FOAR. Early reports noted that the 2 disorders shared many phenotypic features and may be identical. Although there is variability in the expression of some features (e.g. agenesis of the corpus callosum and proteinuria), DBS and FOAR are now considered to represent the same entity.

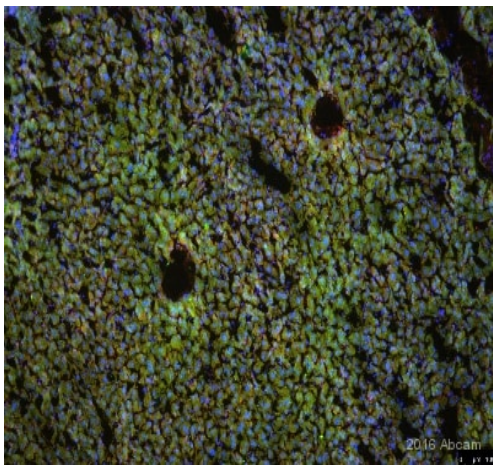
### Sequence similarities

Belongs to the LDLR family.  
Contains 17 EGF-like domains.  
Contains 36 LDL-receptor class A domains.  
Contains 37 LDL-receptor class B repeats.

### Cellular localization

Membrane. Membrane > coated pit.

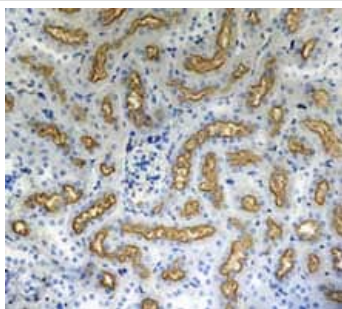
## Images



Immunohistochemistry (Formalin/PFA-fixed paraffin-embedded sections) - Anti-Lrp2 / Megalin antibody [CD7D5] (ab184676)

This image is courtesy of an Abreview by Ruma Raha-Chowdhury.

ab184676 staining Lrp2 / Megalin in mouse liver tissue sections by Immunohistochemistry (PFA perfusion fixed frozen sections). Tissue samples were fixed by perfusion with paraformaldehyde, cut into 20 micron slices, permeabilized with 0.1 M PBS with 3% Triton X and blocked with 10% serum for 60 minutes at 24°C. The sample was incubated with primary antibody (1/1000 in 0.1M PBST with 10% donkeys serum) at 4°C for 24 hours. An Alexa Fluor® 568-conjugated donkey monoclonal (1/1000) was used as the secondary antibody.



Immunohistochemistry (Formalin/PFA-fixed paraffin-embedded sections) - Anti-Lrp2 / Megalin antibody [CD7D5] (ab184676)

Immunohistochemical analysis of formalin-fixed, paraffin-embedded mouse kidney tissue labeling Lrp2 / Megalin with ab184676 at 1/100 dilution.

**Please note:** All products are "FOR RESEARCH USE ONLY. NOT FOR USE IN DIAGNOSTIC PROCEDURES"

### Our Abpromise to you: Quality guaranteed and expert technical support

- Replacement or refund for products not performing as stated on the datasheet
- Valid for 12 months from date of delivery
- Response to your inquiry within 24 hours
- We provide support in Chinese, English, French, German, Japanese and Spanish
- Extensive multi-media technical resources to help you
- We investigate all quality concerns to ensure our products perform to the highest standards

If the product does not perform as described on this datasheet, we will offer a refund or replacement. For full details of the Abpromise, please visit <https://www.abcam.com/abpromise> or contact our technical team.

## Terms and conditions

---

- Guarantee only valid for products bought direct from Abcam or one of our authorized distributors