


## Product datasheet

# Anti-LRP6 (phospho S1490) + LRP5 (phospho S1503) antibody ab226758

4 Images

### Overview

<b>Product name</b>	Anti-LRP6 (phospho S1490) + LRP5 (phospho S1503) antibody
<b>Description</b>	Rabbit polyclonal to LRP6 (phospho S1490) + LRP5 (phospho S1503)
<b>Host species</b>	Rabbit
<b>Tested applications</b>	<b>Suitable for:</b> WB, Dot blot, Indirect ELISA
<b>Species reactivity</b>	<b>Reacts with:</b> Human <b>Predicted to work with:</b> Mouse, Xenopus laevis, Rhesus monkey 
<b>Immunogen</b>	Synthetic peptide within Human LRP6 (C terminal) (phospho S1490). The exact immunogen sequence used to generate this antibody is proprietary information. If additional detail on the immunogen is needed to determine the suitability of the antibody for your needs, please <b><u>contact</u></b> our Scientific Support team to discuss your requirements. (Carrier-protein conjugated). Database link: <b><u>O75581</u></b>
<b>Positive control</b>	WB: HeLa whole cell extract.
<b>General notes</b>	<p>The Life Science industry has been in the grips of a reproducibility crisis for a number of years. Abcam is leading the way in addressing this with our range of recombinant monoclonal antibodies and knockout edited cell lines for gold-standard validation. Please check that this product meets your needs before purchasing.</p> <p>If you have any questions, special requirements or concerns, please send us an inquiry and/or contact our Support team ahead of purchase. Recommended alternatives for this product can be found below, along with publications, customer reviews and Q&amp;As</p>

### Properties

<b>Form</b>	Liquid
<b>Storage instructions</b>	Shipped at 4°C. Store at +4°C short term (1-2 weeks). Upon delivery aliquot. Store at -20°C long term. Avoid freeze / thaw cycle.
<b>Storage buffer</b>	pH: 7.00 Preservative: 0.025% Proclin 300 Constituents: 78% PBS, 1% BSA, 20% Glycerol (glycerin, glycerine)
<b>Purity</b>	Immunogen affinity purified

Clonality	Polyclonal
Isotype	IgG

### Applications

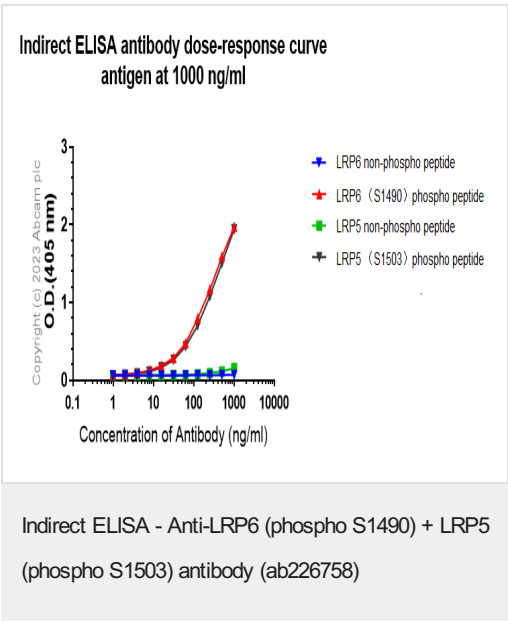
**The Abpromise guarantee** Our **Abpromise guarantee** covers the use of ab226758 in the following tested applications. The application notes include recommended starting dilutions; optimal dilutions/concentrations should be determined by the end user.

Application	Abreviews	Notes
WB		1/500 - 1/3000. Predicted molecular weight: 180 kDa.
Dot blot		Use at an assay dependent concentration.
Indirect ELISA		Use at an assay dependent concentration.

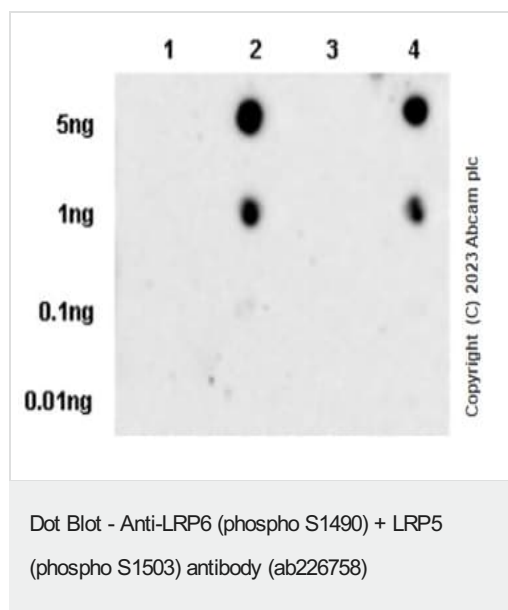
### Target

**Cellular localization** LRP6: Membrane. Endoplasmic reticulum. On Wnt signaling, undergoes a cycle of caveolin- or clathrin-mediated endocytosis and plasma membrane location. Released from the endoplasmic reticulum on palmitoylation. Mono-ubiquitination retains it in the endoplasmic reticulum in the absence of palmitoylation. On Wnt signaling, phosphorylated, aggregates and colocalizes with AXIN1 and GSK3B at the plasma membrane in LRP6-signalsomes. Chaperoned to the plasma membrane by MESD. LRP5: Membrane. Endoplasmic reticulum. Chaperoned to the plasma membrane by MESD.

### Images



Indirect ELISA showing ab226758 binding to LRP6 (phospho S1490) + LRP5 (phospho S1503) peptides. Plates were coated with Human LRP6 non-phospho peptide, Human LRP6 (phospho S1490) peptide, Human LRP5 non-phospho peptide and Human LRP5 (phospho S1503) peptide at 1000 ng/ml. Secondary antibody was Alkaline Phosphatase-conjugated AffiniPure Goat Anti-Rabbit IgG(H+L) used at 1/2500 dilution.



Dot blot analysis of LRP6 (phospho S1490) + LRP5 (phospho S1503) using ab226758 at 1:1000 dilution followed by a Goat Anti-Rabbit IgG, (H+L), Peroxidase conjugated ([ab97051](#)) at 1:100,000 dilution.

**Lane 1:** LRP6 non-phospho peptide

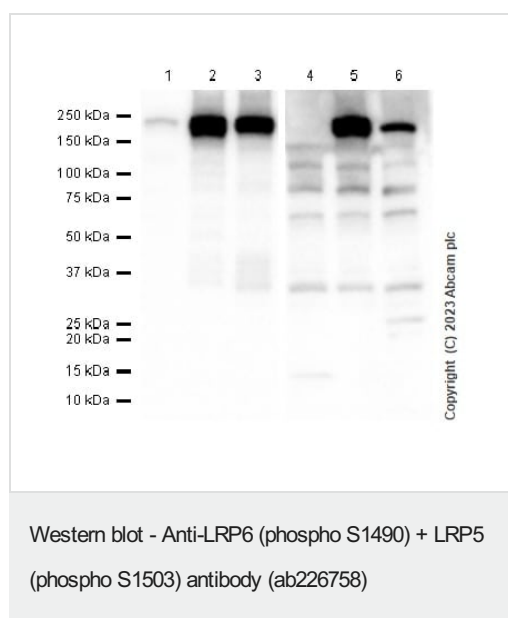
**Lane 2:** LRP6 (S1490) phospho peptide

**Lane 3:** LRP5 non-phospho peptide

**Lane 4:** LRP5 (S1503) phospho peptide

Exposure time: 3 minutes

Blocking and diluting buffer and concentration: 5% NFDM/TBST



**Lanes 1-3 :** Anti-LRP6 (phospho S1490) + LRP5 (phospho S1503) antibody (ab226758) at 1/1000 dilution

**Lanes 4-6 :** Anti-6X His tag® antibody [EPR20547] - ChIP Grade ([ab213204](#)) at 1/5000 dilution

**Lanes 1 & 4 :** 293T transfected with blank vector whole cell lysate

**Lanes 2 & 5 :** 293T transfected with LRP6 overexpression vector whole cell lysate

**Lanes 3 & 6 :** 293T transfected with LRP5 overexpression vector whole cell lysate

## Secondary

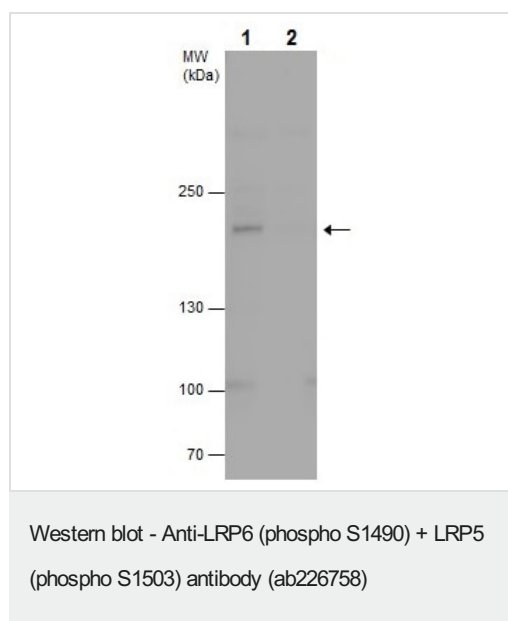
**All lanes :** Goat Anti-Rabbit IgG H&L (HRP) ([ab97051](#)) at 1/20000 dilution

**Predicted band size:** 180 kDa

**Observed band size:** 180 kDa

**Exposure time:** 5 seconds

Blocking and diluting buffer and concentration: 5% NFDM /TBST.



**All lanes :** Anti-LRP6 (phospho S1490) + LRP5 (phospho S1503) antibody (ab226758) at 1/1000 dilution

**Lane 1 :** Untreated HeLa (human epithelial cell line from cervix adenocarcinoma) whole cell extract

**Lane 2 :** HeLa (human epithelial cell line from cervix adenocarcinoma) whole cell extract treated with Calf-intestinal alkaline phosphatase

Lysates/proteins at 30 µg per lane.

**Predicted band size:** 180 kDa

5% SDS-PAGE gel.

**Please note:** All products are "FOR RESEARCH USE ONLY. NOT FOR USE IN DIAGNOSTIC PROCEDURES"

### Our Abpromise to you: Quality guaranteed and expert technical support

- Replacement or refund for products not performing as stated on the datasheet
- Valid for 12 months from date of delivery
- Response to your inquiry within 24 hours
- We provide support in Chinese, English, French, German, Japanese and Spanish
- Extensive multi-media technical resources to help you
- We investigate all quality concerns to ensure our products perform to the highest standards

If the product does not perform as described on this datasheet, we will offer a refund or replacement. For full details of the Abpromise, please visit <https://www.abcam.com/abpromise> or contact our technical team.

### Terms and conditions

- Guarantee only valid for products bought direct from Abcam or one of our authorized distributors