

Product datasheet

Anti-LRPPRC/GP130 antibody ab228994

3 Images

Overview

Product name	Anti-LRPPRC/GP130 antibody
Description	Rabbit polyclonal to LRPPRC/GP130
Host species	Rabbit
Tested applications	Suitable for: WB, IHC-P, ICC/IF
Species reactivity	Reacts with: Human
Immunogen	Recombinant fragment within Human LRPPRC/GP130. The exact sequence is proprietary. Database link: P42704
Positive control	WB: HepG2, HCT116, whole cell lysate. IHC-P: Human gastric cancer tissue. ICC/IF: HeLa cells.
General notes	<p>The Life Science industry has been in the grips of a reproducibility crisis for a number of years. Abcam is leading the way in addressing this with our range of recombinant monoclonal antibodies and knockout edited cell lines for gold-standard validation. Please check that this product meets your needs before purchasing.</p> <p>If you have any questions, special requirements or concerns, please send us an inquiry and/or contact our Support team ahead of purchase. Recommended alternatives for this product can be found below, along with publications, customer reviews and Q&As</p>

Properties

Form	Liquid
Storage instructions	Shipped at 4°C. Store at +4°C short term (1-2 weeks). Upon delivery aliquot. Store at -20°C. Avoid freeze / thaw cycle.
Storage buffer	pH: 7.00 Preservative: 0.01% Thimerosal (merthiolate) Constituents: 1.21% Tris, 0.75% Glycine, 20% Glycerol (glycerin, glycerine)
Purity	Immunogen affinity purified
Clonality	Polyclonal
Isotype	IgG

Applications

The Abpromise guarantee

Our **Abpromise guarantee** covers the use of ab228994 in the following tested applications.

The application notes include recommended starting dilutions; optimal dilutions/concentrations should be determined by the end user.

Application	Abreviews	Notes
WB		1/500 - 1/3000. Predicted molecular weight: 158 kDa.
IHC-P		1/100 - 1/1000.
ICC/IF		1/100 - 1/1000.

Target**Function**

May play a role in RNA metabolism in both nuclei and mitochondria. In the nucleus binds to HNRPA1-associated poly(A) mRNAs and is part of nmRNP complexes at late stages of mRNA maturation which are possibly associated with nuclear mRNA export. May bind mature mRNA in the nucleus outer membrane. In mitochondria binds to poly(A) mRNA. Plays a role in translation or stability of mitochondrially encoded cytochrome c oxidase (COX) subunits. May be involved in transcription regulation. Cooperates with PPARGC1A to regulate certain mitochondrially encoded genes and gluconeogenic genes and may regulate docking of PPARGC1A to transcription factors. Seems to be involved in the transcription regulation of the multidrug-related genes MDR1 and MVP. Part of a nuclear factor that binds to the invMED1 element of MDR1 and MVP gene promoters. Binds single-stranded DNA.

Tissue specificity

Expressed ubiquitously. Expression is highest in heart, skeletal muscle, kidney and liver, intermediate in brain, non-mucosal colon, spleen and placenta, and lowest in small intestine, thymus, lung and peripheral blood leukocytes.

Involvement in disease

Leigh syndrome French-Canadian type

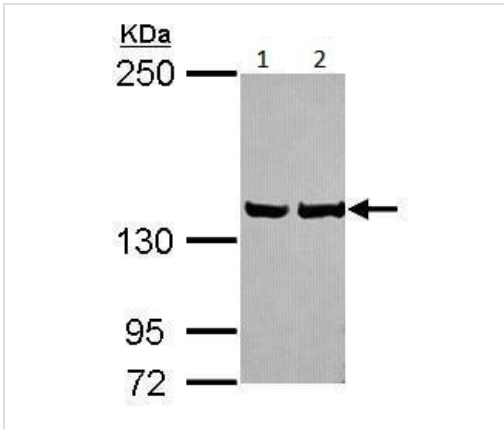
Sequence similarities

Contains 20 PPR (pentatricopeptide) repeats.

Cellular localization

Mitochondrion. Nucleus, nucleoplasm. Nucleus inner membrane. Nucleus outer membrane. Seems to be predominantly mitochondrial.

Images



Western blot - Anti-LRPPRC/GP130 antibody (ab228994)

All lanes : Anti-LRPPRC/GP130 antibody (ab228994) at 1/1000 dilution

Lane 1 : HepG2 (human liver hepatocellular carcinoma cell line) whole cell lysate.

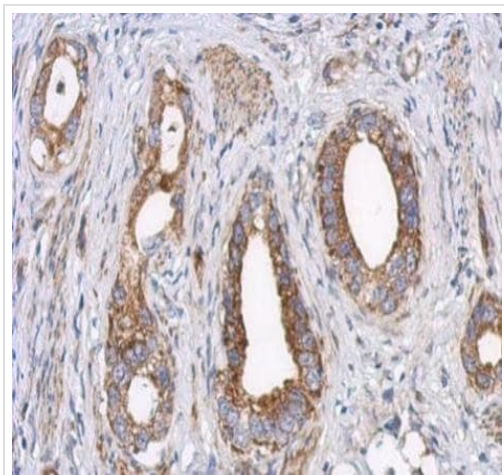
Lane 2 : HCT 116 (human colorectal carcinoma cell line) whole cell lysate.

Lysates/proteins at 30 µg per lane.

Developed using the ECL technique.

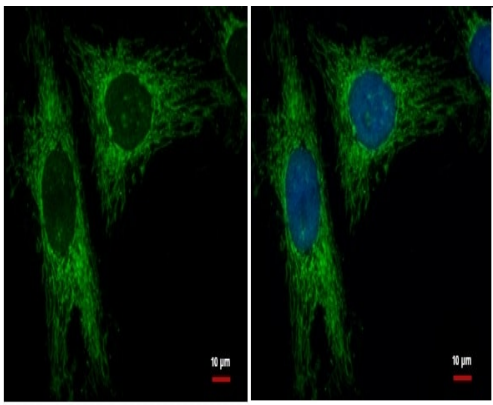
Predicted band size: 158 kDa

5% SDS-PAGE gel.



Immunohistochemistry (Formalin/PFA-fixed paraffin-embedded sections) - Anti-LRPPRC/GP130 antibody (ab228994)

Paraffin-embedded human gastric cancer tissue stained for LRPPRC/GP130 using ab228994 at 1/500 dilution in immunohistochemical analysis.



Immunocytochemistry/ Immunofluorescence - Anti-LRPPRC/GP130 antibody (ab228994)

Paraformaldehyde-fixed HeLa (human epithelial cell line from cervix adenocarcinoma) cells stained for LRP130 (green) using ab228994 at 1/500 dilution in ICC/IF.

Nuclear counterstain: Hoechst 33342 (blue).

Please note: All products are "FOR RESEARCH USE ONLY. NOT FOR USE IN DIAGNOSTIC PROCEDURES"

Our Abpromise to you: Quality guaranteed and expert technical support

- Replacement or refund for products not performing as stated on the datasheet
- Valid for 12 months from date of delivery
- Response to your inquiry within 24 hours
- We provide support in Chinese, English, French, German, Japanese and Spanish
- Extensive multi-media technical resources to help you
- We investigate all quality concerns to ensure our products perform to the highest standards

If the product does not perform as described on this datasheet, we will offer a refund or replacement. For full details of the Abpromise, please visit <https://www.abcam.com/abpromise> or contact our technical team.

Terms and conditions

- Guarantee only valid for products bought direct from Abcam or one of our authorized distributors