


Anti-LRRC4C antibody ab111572

★★★★★ [2 Abreviews](#) [3 Images](#)

Overview

Product name	Anti-LRRC4C antibody
Description	Rabbit polyclonal to LRRC4C
Host species	Rabbit
Tested applications	Suitable for: WB, ICC/IF, IHC-P
Species reactivity	Reacts with: Human Predicted to work with: Mouse, Rat, Zebrafish 
Immunogen	Recombinant fragment corresponding to Human LRRC4C aa 5-195.
Positive control	NT2D1, IMR32, U-87 MG and MCF7 cells and whole cell lysates; Human breast cancer tissue.
General notes	<p>The Life Science industry has been in the grips of a reproducibility crisis for a number of years. Abcam is leading the way in addressing this with our range of recombinant monoclonal antibodies and knockout edited cell lines for gold-standard validation. Please check that this product meets your needs before purchasing.</p> <p>If you have any questions, special requirements or concerns, please send us an inquiry and/or contact our Support team ahead of purchase. Recommended alternatives for this product can be found below, along with publications, customer reviews and Q&As</p>

Properties

Form	Liquid
Storage instructions	Shipped at 4°C. Upon delivery aliquot and store at -20°C or -80°C. Avoid repeated freeze / thaw cycles.
Storage buffer	pH: 7.00 Preservative: 0.01% Thimerosal (merthiolate) Constituents: 1.21% Tris, 0.75% Glycine, 20% Glycerol (glycerin, glycerine)
Purity	Immunogen affinity purified
Clonality	Polyclonal
Isotype	IgG

Applications

The Abpromise guarantee

Our **Abpromise guarantee** covers the use of ab111572 in the following tested applications.

The application notes include recommended starting dilutions; optimal dilutions/concentrations should be determined by the end user.

Application	Abreviews	Notes
WB		1/500 - 1/3000. Predicted molecular weight: 72 kDa.
ICC/IF		1/100 - 1/500.
IHC-P		1/100 - 1/500. Perform heat mediated antigen retrieval with citrate buffer pH 6 before commencing with IHC staining protocol. Alternative antigen retrieval method: heat mediated Tris-EDTA buffer, pH 8.0

Target

Function

May promote neurite outgrowth of developing thalamic neurons.

Tissue specificity

Highly expressed in the cerebral cortex, including frontal, parietal and occipital lobes. Putamen, amygdala, hippocampus and medulla oblongata show moderate expression. Caudate nucleus and thalamus express small amounts, whereas other brain regions show very weak or no expression.

Sequence similarities

Contains 1 Ig-like C2-type (immunoglobulin-like) domain.

Contains 9 LRR (leucine-rich) repeats.

Contains 1 LRRCT domain.

Contains 1 LRRNT domain.

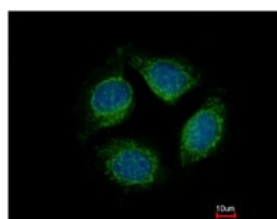
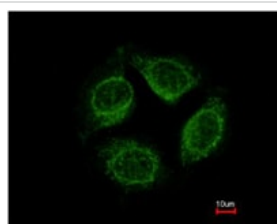
Domain

The LRR region is both necessary and sufficient for the interaction with NTNG1.

Cellular localization

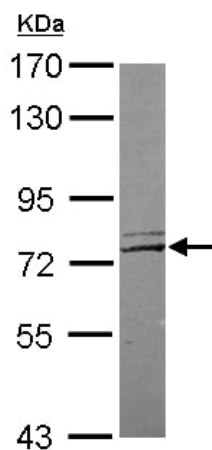
Cell junction, synapse, postsynaptic cell membrane.

Images



ab111572 at 1/500 dilution staining LRRC4C in methanol-fixed MCF7 cells by Immunofluorescence. Lower image shows cells co-stained with Hoechst 33342.

Immunocytochemistry/ Immunofluorescence - Anti-LRRC4C antibody (ab111572)

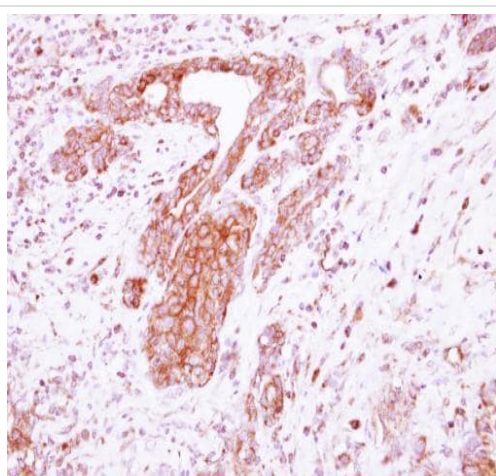


Western blot - Anti-LRRC4C antibody (ab111572)

Anti-LRRC4C antibody (ab111572) at 1/2000 dilution + MCF7 whole cell lysate at 30 µg

Predicted band size: 72 kDa

7.5% SDS-PAGE.



Immunohistochemistry (Formalin/PFA-fixed paraffin-embedded sections) - Anti-LRRC4C antibody (ab111572)

Paraffin-embedded human breast cancer tissue stained for LRRC4C using ab111572 at 1/250 dilution in Immunohistochemical analysis.

Please note: All products are "FOR RESEARCH USE ONLY. NOT FOR USE IN DIAGNOSTIC PROCEDURES"

Our Abpromise to you: Quality guaranteed and expert technical support

- Replacement or refund for products not performing as stated on the datasheet
- Valid for 12 months from date of delivery
- Response to your inquiry within 24 hours
- We provide support in Chinese, English, French, German, Japanese and Spanish
- Extensive multi-media technical resources to help you
- We investigate all quality concerns to ensure our products perform to the highest standards

If the product does not perform as described on this datasheet, we will offer a refund or replacement. For full details of the Abpromise, please visit <https://www.abcam.com/abpromise> or contact our technical team.

Terms and conditions

- Guarantee only valid for products bought direct from Abcam or one of our authorized distributors