

Anti-LRRC59 antibody ab127912

[2 References](#) [4 Images](#)

Overview

Product name	Anti-LRRC59 antibody
Description	Rabbit polyclonal to LRRC59
Host species	Rabbit
Tested applications	Suitable for: WB, IHC-P, ICC/IF
Species reactivity	Reacts with: Human
Immunogen	Recombinant fragment, corresponding to a region within amino acids 3-196 of Human LRRC59 (Q96AG4).
Positive control	A431, HeLa and HepG2 cell lysates; Human U87 xenograft tissue; HeLa cells.
General notes	<p>The Life Science industry has been in the grips of a reproducibility crisis for a number of years. Abcam is leading the way in addressing this with our range of recombinant monoclonal antibodies and knockout edited cell lines for gold-standard validation. Please check that this product meets your needs before purchasing.</p> <p>If you have any questions, special requirements or concerns, please send us an inquiry and/or contact our Support team ahead of purchase. Recommended alternatives for this product can be found below, along with publications, customer reviews and Q&As</p>

Properties

Form	Liquid
Storage instructions	Shipped at 4°C. Upon delivery aliquot. Store at -20°C or -80°C. Avoid freeze / thaw cycle.
Storage buffer	<p>pH: 7.00</p> <p>Preservative: 0.01% Thimerosal (merthiolate)</p> <p>Constituents: 78.99% PBS, 1% BSA, 20% Glycerol (glycerin, glycerine)</p>
Purity	Immunogen affinity purified
Purification notes	ab127912 is purified by antigen-affinity chromatography.
Clonality	Polyclonal
Isotype	IgG

Applications

The Abpromise guarantee

Our **Abpromise guarantee** covers the use of ab127912 in the following tested applications.

The application notes include recommended starting dilutions; optimal dilutions/concentrations should be determined by the end user.

Application	Abreviews	Notes
WB		1/500 - 1/3000. Predicted molecular weight: 35 kDa.
IHC-P		1/100 - 1/1000.
ICC/IF		1/100 - 1/1000.

Target

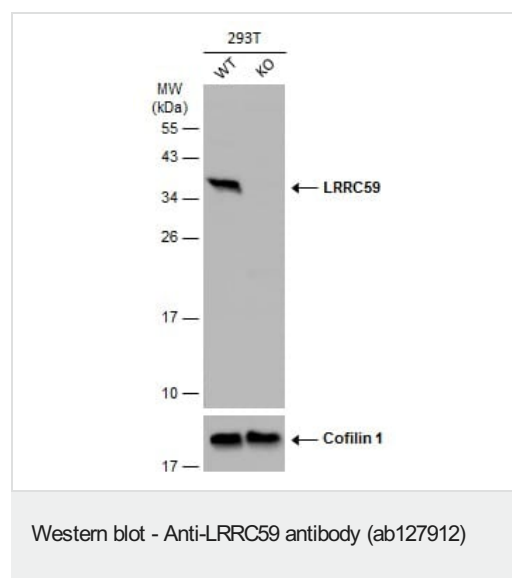
Sequence similarities

Contains 5 LRR (leucine-rich) repeats.

Cellular localization

Microsome membrane. Endoplasmic reticulum membrane.

Images



All lanes : Anti-LRRC59 antibody (ab127912) at 1/1000 dilution

Lane 1 : WT 293T cell extracts

Lane 2 : LRRC59 Knockout 293T cell extracts

Lysates/proteins at 30 µg per lane.

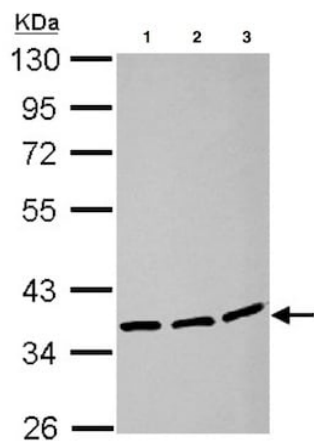
Secondary

All lanes : HRP-conjugated anti-rabbit IgG

Predicted band size: 35 kDa



ab127912 at 1/500 dilution staining LRRC58 in paraffin-embedded Human U87 xenograft tissue by Immunohistochemistry.



Western blot - Anti-LRRC59 antibody (ab127912)

All lanes : Anti-LRRC59 antibody (ab127912) at 1/1000 dilution

Lane 1 : A431 whole cell lysate

Lane 2 : HeLa whole cell lysate

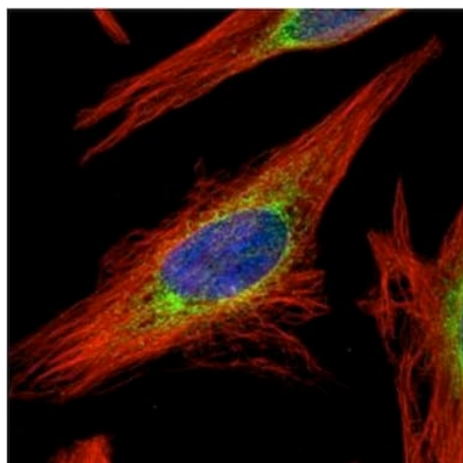
Lane 3 : HepG2 whole cell lysate

Lysates/proteins at 30 µg per lane.

Developed using the ECL technique.

Predicted band size: 35 kDa

10% SDS PAGE



Immunocytochemistry/ Immunofluorescence - Anti-LRRC59 antibody (ab127912)

ab127912 at 1/500 dilution staining LRRC59 in methanol-fixed HeLa cells by confocal Immunofluorescence. Alpha-tubulin filaments are stained in red.

Please note: All products are "FOR RESEARCH USE ONLY. NOT FOR USE IN DIAGNOSTIC PROCEDURES"

Our Abpromise to you: Quality guaranteed and expert technical support

- Replacement or refund for products not performing as stated on the datasheet
- Valid for 12 months from date of delivery
- Response to your inquiry within 24 hours
- We provide support in Chinese, English, French, German, Japanese and Spanish
- Extensive multi-media technical resources to help you
- We investigate all quality concerns to ensure our products perform to the highest standards

If the product does not perform as described on this datasheet, we will offer a refund or replacement. For full details of the Abpromise,

please visit <https://www.abcam.com/abpromise> or contact our technical team.

Terms and conditions

- Guarantee only valid for products bought direct from Abcam or one of our authorized distributors