

Anti-LRRTM3 antibody ab106640

[1 Image](#)

Overview

Product name	Anti-LRRTM3 antibody
Description	Rabbit polyclonal to LRRTM3
Host species	Rabbit
Specificity	This antibody will only detect the larger isoform of LRRTM3. Predicted to not cross-react with other LRRTM family members.
Tested applications	Suitable for: WB
Species reactivity	Reacts with: Mouse
Immunogen	Synthetic peptide corresponding to Human LRRTM3 (C terminal). Database link: Q86VH5
Positive control	WB: Mouse brain tissue lysate.
General notes	<p>The Life Science industry has been in the grips of a reproducibility crisis for a number of years. Abcam is leading the way in addressing this with our range of recombinant monoclonal antibodies and knockout edited cell lines for gold-standard validation. Please check that this product meets your needs before purchasing.</p> <p>If you have any questions, special requirements or concerns, please send us an inquiry and/or contact our Support team ahead of purchase. Recommended alternatives for this product can be found below, along with publications, customer reviews and Q&As</p>

Properties

Form	Liquid
Storage instructions	Shipped at 4°C. Store at 4°C (stable for up to 12 months).
Storage buffer	pH: 7.2 Preservative: 0.02% Sodium azide Constituent: PBS
Purity	Protein A purified
Purification notes	ab106640 is purified by affinity chromatography via a peptide column.
Clonality	Polyclonal
Isotype	IgG

Applications

The Abpromise guarantee

Our **Abpromise guarantee** covers the use of ab106640 in the following tested applications.

The application notes include recommended starting dilutions; optimal dilutions/concentrations should be determined by the end user.

Application	Abreviews	Notes
WB		Use a concentration of 0.5 - 2 µg/ml. Predicted molecular weight: 66 kDa.

Target

Function

May play a role in the development and maintenance of the vertebrate nervous system.

Tissue specificity

Expressed in neuronal tissues.

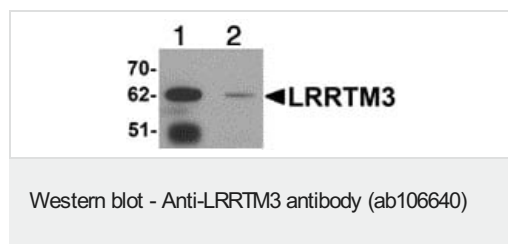
Sequence similarities

Belongs to the LRRTM family.
Contains 10 LRR (leucine-rich) repeats.
Contains 1 LRRCT domain.
Contains 1 LRRNT domain.

Cellular localization

Membrane.

Images



All lanes : Anti-LRRTM3 antibody (ab106640) at 0.5 µg/ml

Lane 1 : Mouse brain tissue lysate

Lane 2 : Mouse brain tissue lysate with blocking peptide

Lysates/proteins at 15 µg per lane.

Predicted band size: 66 kDa

Please note: All products are "FOR RESEARCH USE ONLY. NOT FOR USE IN DIAGNOSTIC PROCEDURES"

Our Abpromise to you: Quality guaranteed and expert technical support

- Replacement or refund for products not performing as stated on the datasheet
- Valid for 12 months from date of delivery
- Response to your inquiry within 24 hours
- We provide support in Chinese, English, French, German, Japanese and Spanish
- Extensive multi-media technical resources to help you
- We investigate all quality concerns to ensure our products perform to the highest standards

If the product does not perform as described on this datasheet, we will offer a refund or replacement. For full details of the Abpromise,

please visit <https://www.abcam.com/abpromise> or contact our technical team.

Terms and conditions

- Guarantee only valid for products bought direct from Abcam or one of our authorized distributors