

## Product datasheet

# Anti-LSM12 antibody [EPR12282-87] ab173292

Recombinant **RabMAb**

[1 References](#) [5 Images](#)

### Overview

<b>Product name</b>	Anti-LSM12 antibody [EPR12282-87]
<b>Description</b>	Rabbit monoclonal [EPR12282-87] to LSM12
<b>Host species</b>	Rabbit
<b>Tested applications</b>	<b>Suitable for:</b> ICC/IF, IHC-P, IP, WB <b>Unsuitable for:</b> Flow Cyt
<b>Species reactivity</b>	<b>Reacts with:</b> Mouse, Rat, Human
<b>Immunogen</b>	Recombinant fragment within Human LSM12. The exact sequence is proprietary. Database link: <a href="#">Q3MHD2</a>
<b>Positive control</b>	293T, HepG2, HeLa and fetal brain lysates; Human endometrial carcinoma tissue; HepG2 cells.
<b>General notes</b>	This product is a recombinant monoclonal antibody, which offers several advantages including: <ul style="list-style-type: none"> <li>- High batch-to-batch consistency and reproducibility</li> <li>- Improved sensitivity and specificity</li> <li>- Long-term security of supply</li> <li>- Animal-free production</li> </ul> For more information <a href="#">see here</a> . Our RabMAb <sup>®</sup> technology is a patented hybridoma-based technology for making rabbit monoclonal antibodies. For details on our patents, please refer to <a href="#">RabMAb<sup>®</sup> patents</a> .

### Properties

<b>Form</b>	Liquid
<b>Storage instructions</b>	Shipped at 4°C. Store at +4°C short term (1-2 weeks). Upon delivery aliquot. Store at -20°C long term. Avoid freeze / thaw cycle.
<b>Storage buffer</b>	pH: 7.20 Preservative: 0.01% Sodium azide Constituents: 9% PBS, 40% Glycerol (glycerin, glycerine), 0.05% BSA, 50% Tissue culture supernatant
<b>Purity</b>	Protein A purified
<b>Clonality</b>	Monoclonal
<b>Clone number</b>	EPR12282-87

Isotype

IgG

## Applications

### The Abpromise guarantee

Our **Abpromise guarantee** covers the use of ab173292 in the following tested applications.

The application notes include recommended starting dilutions; optimal dilutions/concentrations should be determined by the end user.

Application	Abreviews	Notes
ICC/IF		1/100 - 1/250.
IHC-P		1/50 - 1/100. Perform heat mediated antigen retrieval with citrate buffer pH 6 before commencing with IHC staining protocol.
IP		1/10 - 1/100.
WB		1/10000 - 1/50000. Predicted molecular weight: 22 kDa.

### Application notes

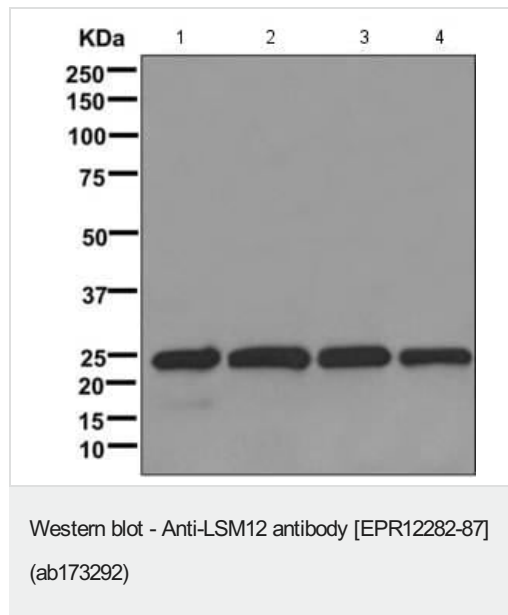
Is unsuitable for Flow Cyt.

## Target

### Relevance

LSM12 belongs to the LSM12 family. The exact function of LSM12 is not known.

## Images



**All lanes** : Anti-LSM12 antibody [EPR12282-87] (ab173292) at 1/10000 dilution

**Lane 1** : 293T cell lysate

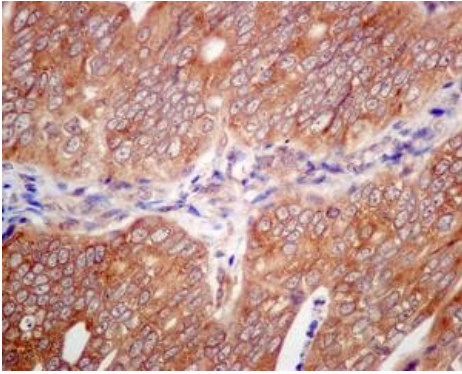
**Lane 2** : HepG2 cell lysate

**Lane 3** : HeLa cell lysate

**Lane 4** : Fetal brain tissue lysate

Lysates/proteins at 10 µg per lane.

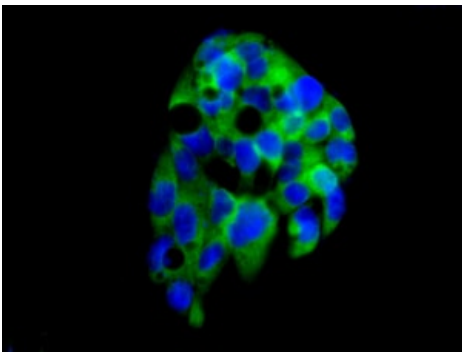
**Predicted band size:** 22 kDa



Immunohistochemistry (Formalin/PFA-fixed paraffin-embedded sections) - Anti-LSM12 antibody [EPR12282-87] (ab173292)

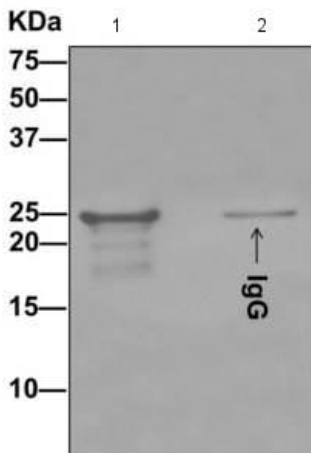
Immunohistochemical analysis of paraffin-embedded Human endometrial carcinoma tissue labeling LSM12 with ab173292 at 1/50 dilution.

Perform heat mediated antigen retrieval with citrate buffer pH 6 before commencing with IHC staining protocol.



Immunocytochemistry/ Immunofluorescence - Anti-LSM12 antibody [EPR12282-87] (ab173292)

Immunofluorescent analysis of HepG2 cells labeling LSM12 with ab173292 at 1/100 dilution.



Immunoprecipitation - Anti-LSM12 antibody [EPR12282-87] (ab173292)

Western blot analysis on immunoprecipitation pellet from 1) HeLa cell lysate or 2) 1X PBS using ab173292 and HRP-conjugated anti-rabbit IgG preferentially detecting the non-reduced form of rabbit IgG.

## Why choose a recombinant antibody?



**Research with confidence**  
Consistent and reproducible results



**Long-term and scalable supply**  
Recombinant technology



**Success from the first experiment**  
Confirmed specificity



**Ethical standards compliant**  
Animal-free production

Anti-LSM12 antibody [EPR12282-87] (ab173292)

**Please note:** All products are "FOR RESEARCH USE ONLY. NOT FOR USE IN DIAGNOSTIC PROCEDURES"

### Our Abpromise to you: Quality guaranteed and expert technical support

---

- Replacement or refund for products not performing as stated on the datasheet
- Valid for 12 months from date of delivery
- Response to your inquiry within 24 hours
- We provide support in Chinese, English, French, German, Japanese and Spanish
- Extensive multi-media technical resources to help you
- We investigate all quality concerns to ensure our products perform to the highest standards

If the product does not perform as described on this datasheet, we will offer a refund or replacement. For full details of the Abpromise, please visit <https://www.abcam.com/abpromise> or contact our technical team.

### Terms and conditions

---

- Guarantee only valid for products bought direct from Abcam or one of our authorized distributors