

## Product datasheet

### Anti-LSP1 antibody [EPR3160] ab134099

Recombinant **RabMAb**

8 Images

#### Overview

<b>Product name</b>	Anti-LSP1 antibody [EPR3160]
<b>Description</b>	Rabbit monoclonal [EPR3160] to LSP1
<b>Host species</b>	Rabbit
<b>Tested applications</b>	<b>Suitable for:</b> WB, IHC-P <b>Unsuitable for:</b> Flow Cyt, ICC/IF or IP
<b>Species reactivity</b>	<b>Reacts with:</b> Human
<b>Immunogen</b>	Synthetic peptide within Human LSP1 aa 50-150 (internal sequence). The exact sequence is proprietary.
<b>Positive control</b>	Daudi, Ramos, HuT-78, U937 and K562 cell lysates; Human tonsil tissue
<b>General notes</b>	<p>This product is a recombinant monoclonal antibody, which offers several advantages including:</p> <ul style="list-style-type: none"> <li>- High batch-to-batch consistency and reproducibility</li> <li>- Improved sensitivity and specificity</li> <li>- Long-term security of supply</li> <li>- Animal-free production</li> </ul> <p>For more information <a href="#">see here</a>.</p> <p>Our RabMAb<sup>®</sup> technology is a patented hybridoma-based technology for making rabbit monoclonal antibodies. For details on our patents, please refer to <a href="#">RabMAb<sup>®</sup> patents</a>.</p> <p>Mouse, Rat: We have preliminary internal testing data to indicate this antibody may not react with these species. Please contact us for more information.</p>

#### Properties

<b>Form</b>	Liquid
<b>Storage instructions</b>	Shipped at 4°C. Store at -20°C. Stable for 12 months at -20°C.
<b>Storage buffer</b>	<p>pH: 7.2</p> <p>Preservative: 0.05% Sodium azide</p> <p>Constituents: 0.1% BSA, 40% Glycerol (glycerin, glycerine), 9.85% Tris glycine, 50% Tissue culture supernatant</p>
<b>Purity</b>	Protein A purified

<b>Clonality</b>	Monoclonal
<b>Clone number</b>	EPR3160
<b>Isotype</b>	IgG

## Applications

**The Abpromise guarantee** Our **Abpromise guarantee** covers the use of ab134099 in the following tested applications. The application notes include recommended starting dilutions; optimal dilutions/concentrations should be determined by the end user.

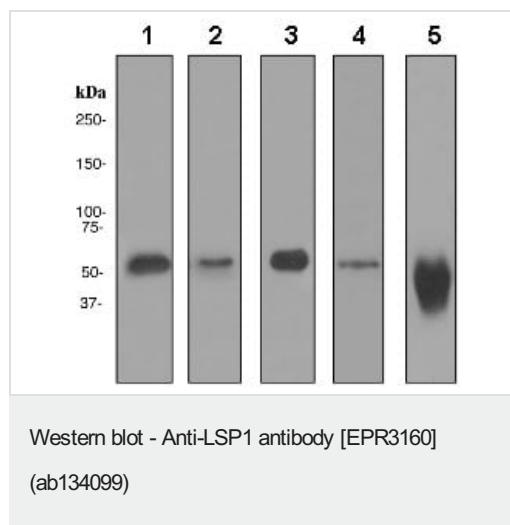
Application	Abreviews	Notes
<b>WB</b>		1/1000 - 1/10000. Predicted molecular weight: 37 kDa.
<b>IHC-P</b>		1/100 - 1/250. Perform heat mediated antigen retrieval with citrate buffer pH 6 before commencing with IHC staining protocol.

**Application notes** Is unsuitable for Flow Cyt, ICC/IF or IP.

## Target

<b>Function</b>	May play a role in mediating neutrophil activation and chemotaxis.
<b>Tissue specificity</b>	Activated T-lymphocytes.
<b>Post-translational modifications</b>	Phosphorylated by casein kinase II, protein kinase C and MAPKAPK2. Phosphorylation by PKC induces translocation from membrane to cytoplasm. Phosphorylation by MAPKAPK2 may regulate neutrophil chemotaxis.
<b>Cellular localization</b>	Cell membrane.

## Images



**All lanes** : Anti-LSP1 antibody [EPR3160] (ab134099) at 1/1000 dilution

**Lane 1** : Daudi cell lysate

**Lane 2** : Ramos cell lysate

**Lane 3** : HuT-7 cell lysate

**Lane 4** : U937 cell lysate

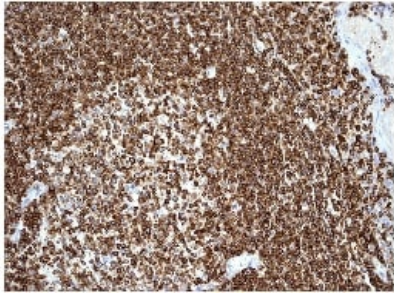
**Lane 5** : K562 cell lysate

Lysates/proteins at 10 µg per lane.

### Secondary

**All lanes** : HRP labelled goat anti-rabbit at 1/2000 dilution

**Predicted band size:** 37 kDa



Immunohistochemistry (Formalin/PFA-fixed paraffin-embedded sections) - Anti-LSP1 antibody  
[EPR3160] (ab134099)

Immunohistochemical analysis of paraffin-embedded Human tonsil tissue labelling LSP1 with ab134099 at 1/100 dilution.

Perform heat mediated antigen retrieval with citrate buffer pH 6 before commencing with IHC staining protocol.

Immunohistochemistry (Formalin/PFA-fixed paraffin-embedded sections) - Anti-LSP1 antibody  
[EPR3160] (ab134099)

Immunohistochemical analysis of paraffin embedded normal Human colon lymphocytes tissue using ab134099 showing +ve staining.

Perform heat mediated antigen retrieval with citrate buffer pH 6 before commencing with IHC staining protocol.

Immunohistochemistry (Formalin/PFA-fixed paraffin-embedded sections) - Anti-LSP1 antibody  
[EPR3160] (ab134099)

Immunohistochemical analysis of paraffin embedded normal Human breast lymphocytes tissue using ab134099 showing +ve staining.

Perform heat mediated antigen retrieval with citrate buffer pH 6 before commencing with IHC staining protocol.

Immunohistochemistry (Formalin/PFA-fixed paraffin-embedded sections) - Anti-LSP1 antibody  
[EPR3160] (ab134099)

Immunohistochemical analysis of paraffin embedded normal Human liver tissue using ab134099 showing -ve staining.

Perform heat mediated antigen retrieval with citrate buffer pH 6 before commencing with IHC staining protocol.

Immunohistochemistry (Formalin/PFA-fixed paraffin-embedded sections) - Anti-LSP1 antibody  
[EPR3160] (ab134099)

Immunohistochemical analysis of paraffin embedded Human Skeletal muscle tissue using ab134099 showing -ve staining.

Perform heat mediated antigen retrieval with citrate buffer pH 6 before commencing with IHC staining protocol.





Immunohistochemistry (Formalin/PFA-fixed paraffin-embedded sections) - Anti-LSP1 antibody  
[EPR3160] (ab134099)

Immunohistochemical analysis of paraffin embedded normal Human brain tissue using ab134099 showing -ve staining.

Perform heat mediated antigen retrieval with citrate buffer pH 6

before commencing with IHC staining protocol.

Why choose a recombinant antibody?

 <p><b>Research with confidence</b> Consistent and reproducible results</p>	 <p><b>Long-term and scalable supply</b> Recombinant technology</p>
 <p><b>Success from the first experiment</b> Confirmed specificity</p>	 <p><b>Ethical standards compliant</b> Animal-free production</p>

Anti-LSP1 antibody [EPR3160] (ab134099)

**Please note:** All products are "FOR RESEARCH USE ONLY. NOT FOR USE IN DIAGNOSTIC PROCEDURES"

### Our Abpromise to you: Quality guaranteed and expert technical support

---

- Replacement or refund for products not performing as stated on the datasheet
- Valid for 12 months from date of delivery
- Response to your inquiry within 24 hours
- We provide support in Chinese, English, French, German, Japanese and Spanish
- Extensive multi-media technical resources to help you
- We investigate all quality concerns to ensure our products perform to the highest standards

If the product does not perform as described on this datasheet, we will offer a refund or replacement. For full details of the Abpromise, please visit <https://www.abcam.com/abpromise> or contact our technical team.

### Terms and conditions

---

- Guarantee only valid for products bought direct from Abcam or one of our authorized distributors