

Product datasheet

Anti-LSS antibody [EPR6704(B)] ab124785

Recombinant RabMAb

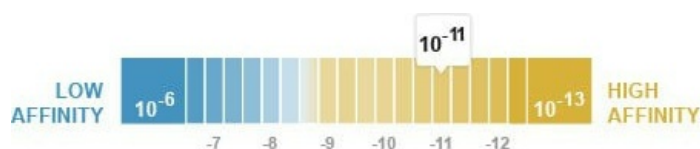
[1 References](#) [5 Images](#)

Overview

Product name	Anti-LSS antibody [EPR6704(B)]
Description	Rabbit monoclonal [EPR6704(B)] to LSS
Host species	Rabbit
Tested applications	Suitable for: WB, IHC-P, Flow Cyt (Intra) Unsuitable for: IP
Species reactivity	Reacts with: Human
Immunogen	Synthetic peptide within Human LSS aa 650-750. The exact sequence is proprietary.
Positive control	WB: SH-SY5Y, HeLa, HT-1376 and Human fetal liver lysates. IHC-P: Human kidney tissue. Flow Cyt (intra): HeLa cells
General notes	<p>This product is a recombinant monoclonal antibody, which offers several advantages including:</p> <ul style="list-style-type: none"> - High batch-to-batch consistency and reproducibility - Improved sensitivity and specificity - Long-term security of supply - Animal-free production <p>For more information see here.</p> <p>Our RabMAb[®] technology is a patented hybridoma-based technology for making rabbit monoclonal antibodies. For details on our patents, please refer to RabMAb[®] patents.</p> <p>Mouse, Rat: We have preliminary internal testing data to indicate this antibody may not react with these species. Please contact us for more information.</p>

Properties

Form	Liquid
Storage instructions	Shipped at 4°C. Store at -20°C.
Dissociation constant (K_D)	K _D = 6.20 x 10 ⁻¹¹ M



Learn more about K_D

Storage buffer	pH: 7.20 Preservative: 0.05% Sodium azide Constituents: 40% Glycerol (glycerin, glycerine), 9.85% Tris glycine, 50% Tissue culture supernatant
Purity	Protein A purified
Clonality	Monoclonal
Clone number	EPR6704(B)
Isotype	IgG

Applications

The Abpromise guarantee Our **Abpromise guarantee** covers the use of ab124785 in the following tested applications. The application notes include recommended starting dilutions; optimal dilutions/concentrations should be determined by the end user.

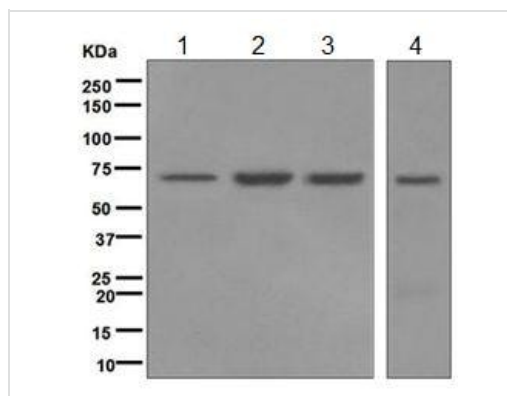
Application	Abreviews	Notes
WB		1/50000 - 1/200000. Predicted molecular weight: 83 kDa.
IHC-P		1/50 - 1/100. Perform heat mediated antigen retrieval before commencing with IHC staining protocol.
Flow Cyt (Intra)		1/100. <u>ab172730</u> - Rabbit monoclonal IgG, is suitable for use as an isotype control with this antibody.

Application notes Is unsuitable for IP.

Target

Relevance Catalyzes the cyclization of (S)-2,3 oxidosqualene to lanosterol, a reaction that forms the sterol nucleus.

Images



Western blot - Anti-LSS antibody [EPR6704(B)]
(ab124785)

All lanes : Anti-LSS antibody [EPR6704(B)] (ab124785) at
1/50000 dilution

Lane 1 : SH-SY5Y cell lysate

Lane 2 : HeLa cell lysate

Lane 3 : HT-1376 cell lysate

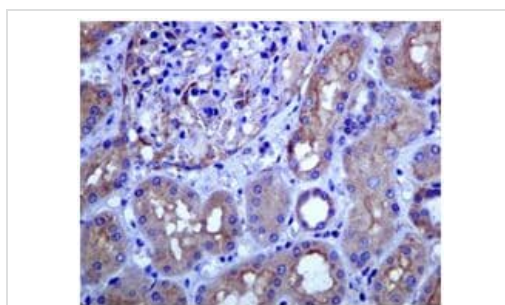
Lane 4 : Human fetal liver tissue lysate

Lysates/proteins at 10 µg per lane.

Secondary

All lanes : Standard HRP labelled goat anti-rabbit at 1/2000
dilution

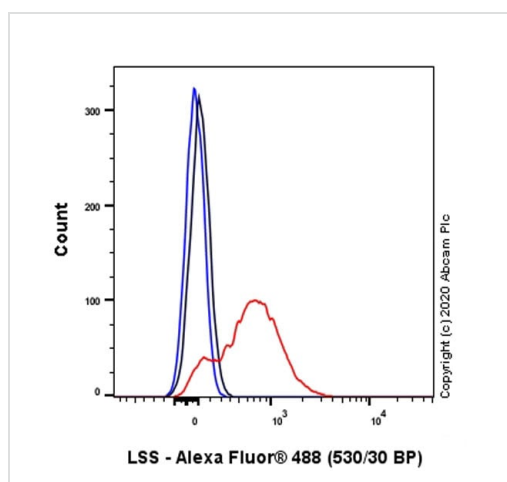
Predicted band size: 83 kDa



Immunohistochemistry (Formalin/PFA-fixed paraffin-
embedded sections) - Anti-LSS antibody
[EPR6704(B)] (ab124785)

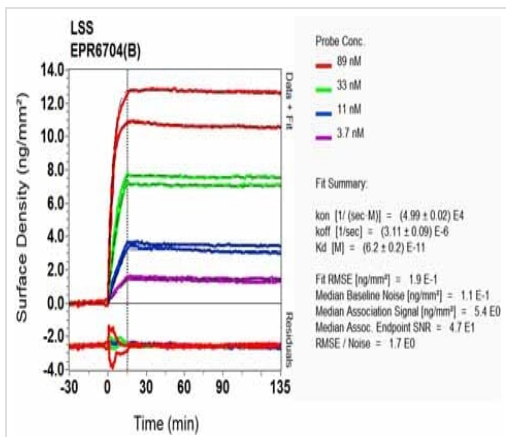
ab124785 at 1/50 dilution staining LSS in paraffin-embedded
Human kidney tissues by Immunohistochemistry.

Perform heat mediated antigen retrieval before commencing with
IHC staining protocol.



Flow Cytometry (Intracellular) - Anti-LSS antibody
[EPR6704(B)] (ab124785)

Flow Cytometry analysis of HeLa (Human cervix adenocarcinoma
epithelial cell) cells labeling LSS with purified ab124785 at 1/100
dilution (10 µg/mL) (Red). Cells were fixed with 4%
Paraformaldehyde and permeabilised with 90% Methanol. A Goat
anti rabbit IgG (Alexa Fluor® 488, [ab150077](#)) secondary antibody
was used at 1/2000. Isotype control - Rabbit monoclonal IgG
(Black). Unlabeled control - Cell without incubation with primary
antibody and secondary antibody (Blue).



SPR Scanning - Anti-LSS antibody [EPR6704(B)]
(ab124785)

Equilibrium dissociation constant (K_D)

Learn more about K_D

[Click here to learn more about \$K_D\$](#)

Why choose a recombinant antibody?



Research with confidence
Consistent and reproducible results



Long-term and scalable supply
Recombinant technology



Success from the first experiment
Confirmed specificity



Ethical standards compliant
Animal-free production

Anti-LSS antibody [EPR6704(B)] (ab124785)

Please note: All products are "FOR RESEARCH USE ONLY. NOT FOR USE IN DIAGNOSTIC PROCEDURES"

Our Abpromise to you: Quality guaranteed and expert technical support

- Replacement or refund for products not performing as stated on the datasheet
- Valid for 12 months from date of delivery
- Response to your inquiry within 24 hours
- We provide support in Chinese, English, French, German, Japanese and Spanish
- Extensive multi-media technical resources to help you
- We investigate all quality concerns to ensure our products perform to the highest standards

If the product does not perform as described on this datasheet, we will offer a refund or replacement. For full details of the Abpromise, please visit <https://www.abcam.com/abpromise> or contact our technical team.

Terms and conditions

- Guarantee only valid for products bought direct from Abcam or one of our authorized distributors