
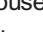


Product datasheet

Anti-LTBP1 antibody ab78294

★★★★★ [1 Abreviews](#) [7 References](#) [3 Images](#)

Overview

Product name	Anti-LTBP1 antibody
Description	Rabbit polyclonal to LTBP1
Host species	Rabbit
Tested applications	Suitable for: WB, IHC-P
Species reactivity	Reacts with: Mouse, Rat Predicted to work with: Cow, Human 
Immunogen	Synthetic peptide corresponding to Human LTBP1 aa 1350-1450 conjugated to keyhole limpet haemocyanin. (Peptide available as ab87128)
Positive control	This antibody gave a positive signal in the following tissue lysates: Rat Liver; Mouse Pancreas; Mouse Spleen.  This antibody gave a positive result in IHC in the following FFPE tissue: Mouse spleen.
General notes	<p>The Life Science industry has been in the grips of a reproducibility crisis for a number of years. Abcam is leading the way in addressing this with our range of recombinant monoclonal antibodies and knockout edited cell lines for gold-standard validation. Please check that this product meets your needs before purchasing.</p> <p>If you have any questions, special requirements or concerns, please send us an inquiry and/or contact our Support team ahead of purchase. Recommended alternatives for this product can be found below, along with publications, customer reviews and Q&As</p>

Properties

Form	Liquid
Storage instructions	Shipped at 4°C. Store at +4°C short term (1-2 weeks). Upon delivery aliquot. Store at -20°C or -80°C. Avoid freeze / thaw cycle.
Storage buffer	pH: 7.40 Preservative: 0.02% Sodium azide Constituent: PBS Batches of this product that have a concentration < 1mg/ml may have BSA added as a stabilising agent. If you would like information about the formulation of a specific lot, please contact our scientific support team who will be happy to help.

Purity	Immunogen affinity purified
Clonality	Polyclonal
Isotype	IgG

Applications

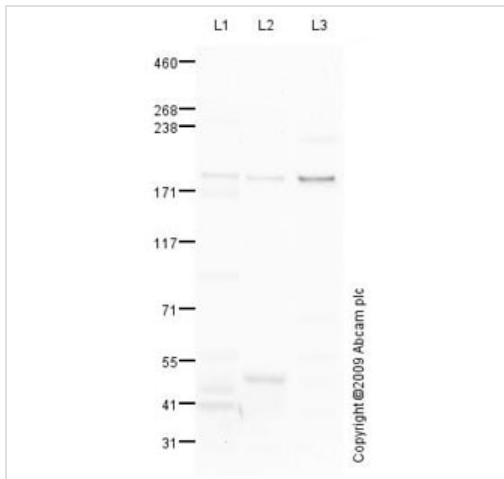
The Abpromise guarantee Our **Abpromise guarantee** covers the use of ab78294 in the following tested applications. The application notes include recommended starting dilutions; optimal dilutions/concentrations should be determined by the end user.

Application	Abreviews	Notes
WB		Use a concentration of 1 µg/ml. Detects a band of approximately 187 kDa (predicted molecular weight: 187 kDa).
IHC-P	★★★★★ (1)	Use a concentration of 5 µg/ml.

Target

Function	May be involved in the assembly, secretion and targeting of TGFB1 to sites at which it is stored and/or activated. May play critical roles in controlling and directing the activity of TGFB1. May have a structural role in the extra cellular matrix (ECM).
Tissue specificity	Isoform Long is found in fibroblasts.
Sequence similarities	Belongs to the LTBP family. Contains 18 EGF-like domains. Contains 4 TB (TGF-beta binding) domains.
Domain	Associates covalently with small latent TGF-beta complex via domain TB 3.
Post-translational modifications	Contains hydroxylated asparagine residues. Isoform Short N-terminus is blocked. The iron and 2-oxoglutarate dependent 3-hydroxylation of aspartate and asparagine is (R) stereospecific within EGF domains.
Cellular localization	Secreted.

Images



Western blot - Anti-LTBP1 antibody (ab78294)

All lanes : Anti-LTBP1 antibody (ab78294) at 1 µg/ml

Lane 1 : Liver (Rat) Tissue Lysate

Lane 2 : Pancreas (Mouse) Tissue Lysate

Lane 3 : Spleen (Mouse) Tissue Lysate

Lysates/proteins at 10 µg per lane.

Secondary

All lanes : Goat polyclonal to Rabbit IgG - H&L - Pre-Adsorbed (HRP) at 1/3000 dilution

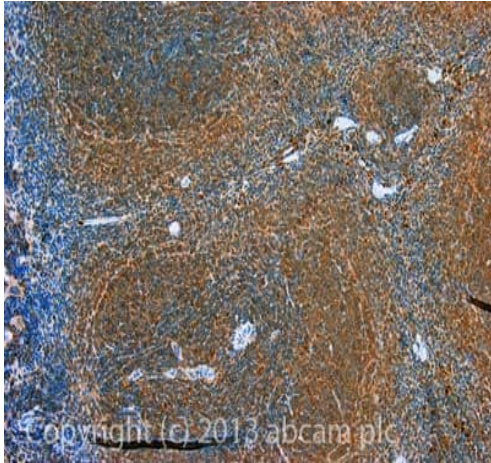
Developed using the ECL technique.

Performed under reducing conditions.

Predicted band size: 187 kDa

Observed band size: 187 kDa

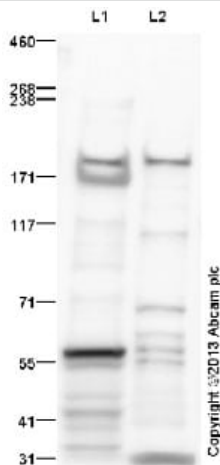
Based on the immunogen sequence, this antibody is predicted to react with all three isoforms of LTBP1. The band detected here might correspond to the long isoform, which is 187 kDa and is found in fibroblasts.



Immunohistochemistry (Formalin/PFA-fixed paraffin-embedded sections) - Anti-LTBP1 antibody (ab78294)

IHC image of LTBP1 staining in Mouse spleen formalin fixed paraffin embedded tissue section, performed on a Leica Bond™ system using the standard protocol B. The section was pre-treated using heat mediated antigen retrieval with sodium citrate buffer (pH6, epitope retrieval solution 1) for 20 mins. The section was then incubated with ab78294, 5µg/ml, for 15 mins at room temperature. A Goat anti-Rabbit biotinylated secondary antibody was used to detect the primary, and visualized using an HRP conjugated ABC system. DAB was used as the chromogen. The section was then counterstained with haematoxylin and mounted with DPX.

For other IHC staining systems (automated and non-automated) customers should optimize variable parameters such as antigen retrieval conditions, primary antibody concentration and antibody incubation times.



Western blot - Anti-LTBP1 antibody (ab78294)

All lanes : Anti-LTBP1 antibody (ab78294) at 1 µg/ml

Lane 1 : Liver (Rat) Tissue Lysate

Lane 2 : Spleen (Mouse) Tissue Lysate

Lysates/proteins at 20 µg per lane.

Secondary

All lanes : Goat Anti-Rabbit IgG H&L (HRP) ([ab97051](#)) at 1/10000 dilution

Developed using the ECL technique.

Performed under reducing conditions.

Predicted band size: 187 kDa

Observed band size: 187 kDa

Additional bands at: 171 kDa (possible cleavage fragment), 55 kDa. We are unsure as to the identity of these extra bands.

Exposure time: 30 seconds

Please note: All products are "FOR RESEARCH USE ONLY. NOT FOR USE IN DIAGNOSTIC PROCEDURES"

Our Abpromise to you: Quality guaranteed and expert technical support

- Replacement or refund for products not performing as stated on the datasheet
- Valid for 12 months from date of delivery
- Response to your inquiry within 24 hours
- We provide support in Chinese, English, French, German, Japanese and Spanish
- Extensive multi-media technical resources to help you
- We investigate all quality concerns to ensure our products perform to the highest standards

If the product does not perform as described on this datasheet, we will offer a refund or replacement. For full details of the Abpromise, please visit <https://www.abcam.com/abpromise> or contact our technical team.

Terms and conditions

- Guarantee only valid for products bought direct from Abcam or one of our authorized distributors