


Product datasheet

Anti-Lunatic Fringe antibody [EPR10391(B)] ab151699

Recombinant RabMAb

[1 References](#) [3 Images](#)

Overview

Product name	Anti-Lunatic Fringe antibody [EPR10391(B)]
Description	Rabbit monoclonal [EPR10391(B)] to Lunatic Fringe
Host species	Rabbit
Tested applications	Suitable for: WB, Flow Cyt (Intra) Unsuitable for: ICC/IF, IHC-P or IP
Species reactivity	Reacts with: Rat, Human Predicted to work with: Mouse 
Immunogen	Synthetic peptide. This information is proprietary to Abcam and/or its suppliers.
Positive control	PC12, HeLa and K562 cell lysates; K562 cells.
General notes	<p>This product is a recombinant monoclonal antibody, which offers several advantages including:</p> <ul style="list-style-type: none">- High batch-to-batch consistency and reproducibility- Improved sensitivity and specificity- Long-term security of supply- Animal-free production <p>For more information see here.</p> <p>Our RabMAb[®] technology is a patented hybridoma-based technology for making rabbit monoclonal antibodies. For details on our patents, please refer to RabMAb[®] patents.</p>

Properties

Form	Liquid
Storage instructions	Shipped at 4°C. Store at -20°C.
Storage buffer	pH: 7.2 Preservative: 0.01% Sodium azide Constituents: 9% PBS, 40% Glycerol (glycerin, glycerine), 0.05% BSA, 50% Tissue culture supernatant
Purity	Tissue culture supernatant
Clonality	Monoclonal
Clone number	EPR10391(B)

Isotype

IgG

Applications

The Abpromise guarantee

Our **Abpromise guarantee** covers the use of ab151699 in the following tested applications.

The application notes include recommended starting dilutions; optimal dilutions/concentrations should be determined by the end user.

Application	Abreviews	Notes
WB		1/1000 - 1/10000. Predicted molecular weight: 42 kDa.
Flow Cyt (Intra)		1/10 - 1/100. ab172730 - Rabbit monoclonal IgG, is suitable for use as an isotype control with this antibody.

Application notes

Is unsuitable for ICC/IF, IHC-P or IP.

Target

Function

Glycosyltransferase that initiates the elongation of O-linked fucose residues attached to EGF-like repeats in the extracellular domain of Notch molecules. Decreases the binding of JAGGED1 to NOTCH2 but not that of DELTA1. Essential mediator of somite segmentation and patterning.

Involvement in disease

Defects in LFNG are the cause of spondylocostal dysostosis type 3 (SCDO3) [MIM:609813]. An autosomal recessive condition of variable severity associated with vertebral and rib segmentation defects. The main skeletal malformations include fusion of vertebrae, hemivertebrae, fusion of certain ribs, and other rib malformations. Deformity of the chest and spine (severe scoliosis, kyphoscoliosis and lordosis) is a natural consequence of the malformation and leads to a dwarf-like appearance. As the thorax is small, infants frequently have respiratory insufficiency and repeated respiratory infections resulting in life-threatening complications in the first year of life.

Sequence similarities

Belongs to the glycosyltransferase 31 family.

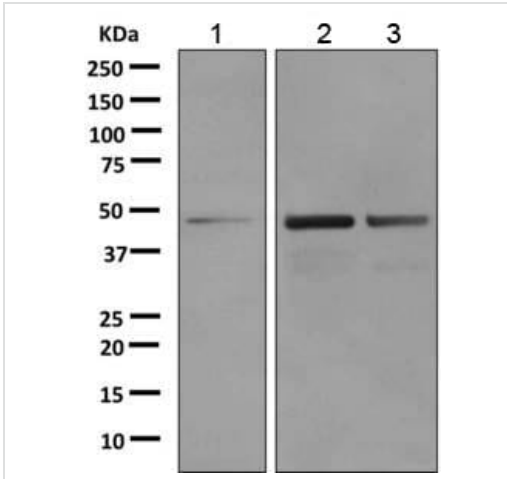
Post-translational modifications

A soluble form may be derived from the membrane form by proteolytic processing.

Cellular localization

Golgi apparatus membrane.

Images



Western blot - Anti-Lunatic Fringe antibody [EPR10391(B)] (ab151699)

All lanes : Anti-Lunatic Fringe antibody [EPR10391(B)] (ab151699) at 1/1000 dilution

Lane 1 : PC12 cell lysate

Lane 2 : HeLa cell lysate

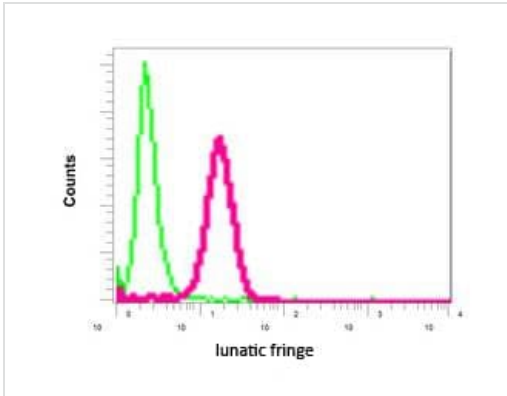
Lane 3 : K562 cell lysate

Lysates/proteins at 10 µg per lane.

Secondary

All lanes : Goat anti-rabbit HRP at 1/2000 dilution

Predicted band size: 42 kDa



Flow Cytometry (Intracellular) - Anti-Lunatic Fringe antibody [EPR10391(B)] (ab151699)

Intracellular flow cytometric analysis of permeabilized K562 cells labeling Lunatic Fringe with ab151699 at 1/10 dilution (red) compared to a nonspecific control antibody (green).

Why choose a recombinant antibody?



Research with confidence
Consistent and reproducible results



Long-term and scalable supply
Recombinant technology



Success from the first experiment
Confirmed specificity



Ethical standards compliant
Animal-free production

Anti-Lunatic Fringe antibody [EPR10391(B)]
(ab151699)

Please note: All products are "FOR RESEARCH USE ONLY. NOT FOR USE IN DIAGNOSTIC PROCEDURES"

Our Abpromise to you: Quality guaranteed and expert technical support

- Replacement or refund for products not performing as stated on the datasheet
- Valid for 12 months from date of delivery
- Response to your inquiry within 24 hours
- We provide support in Chinese, English, French, German, Japanese and Spanish
- Extensive multi-media technical resources to help you
- We investigate all quality concerns to ensure our products perform to the highest standards

If the product does not perform as described on this datasheet, we will offer a refund or replacement. For full details of the Abpromise, please visit <https://www.abcam.com/abpromise> or contact our technical team.

Terms and conditions

- Guarantee only valid for products bought direct from Abcam or one of our authorized distributors