


## Product datasheet

# Anti-LXN/TCI antibody ab154744

[2 References](#) [4 Images](#)

### Overview

<b>Product name</b>	Anti-LXN/TCI antibody
<b>Description</b>	Rabbit polyclonal to LXN/TCI
<b>Host species</b>	Rabbit
<b>Tested applications</b>	<b>Suitable for:</b> WB, IHC-P, ICC/IF
<b>Species reactivity</b>	<b>Reacts with:</b> Mouse, Human <b>Predicted to work with:</b> Cow 
<b>Immunogen</b>	Recombinant fragment corresponding to Human LXN/TCI aa 1-222. Database link: <a href="#">Q9BS40</a>
<b>Positive control</b>	293T, HeLa S3, Molt4 and mouse brain lysates; mouse embryonic stem cells D3; Human FaDu xenograft.
<b>General notes</b>	<p>The Life Science industry has been in the grips of a reproducibility crisis for a number of years. Abcam is leading the way in addressing this with our range of recombinant monoclonal antibodies and knockout edited cell lines for gold-standard validation. Please check that this product meets your needs before purchasing.</p> <p>If you have any questions, special requirements or concerns, please send us an inquiry and/or contact our Support team ahead of purchase. Recommended alternatives for this product can be found below, along with publications, customer reviews and Q&amp;As</p>

### Properties

<b>Form</b>	Liquid
<b>Storage instructions</b>	Shipped at 4°C. Upon delivery aliquot. Store at -20°C or -80°C. Avoid freeze / thaw cycle.
<b>Storage buffer</b>	pH: 7.00 Preservative: 0.01% Thimerosal (merthiolate) Constituents: 1.21% Tris, 0.75% Glycine, 10% Glycerol (glycerin, glycerine)
<b>Purity</b>	Immunogen affinity purified
<b>Clonality</b>	Polyclonal
<b>Isotype</b>	IgG

### Applications

## The Abpromise guarantee

Our **Abpromise guarantee** covers the use of ab154744 in the following tested applications.

The application notes include recommended starting dilutions; optimal dilutions/concentrations should be determined by the end user.

Application	Abreviews	Notes
WB		1/500 - 1/3000. Predicted molecular weight: 26 kDa.
IHC-P		1/100 - 1/1000. Perform heat mediated antigen retrieval before commencing with IHC staining protocol using 10mM Citrate buffer (pH6.0) or Tris-EDTA buffer (pH8.0).
ICC/IF		1/100 - 1/1000.

## Target

### Function

Hardly reversible, non-competitive, and potent inhibitor of CPA1, CPA2 and CPA4.

### Tissue specificity

Highly expressed in heart, prostate, ovary, kidney, pancreas, and colon, moderate or low in other tissues including brain.

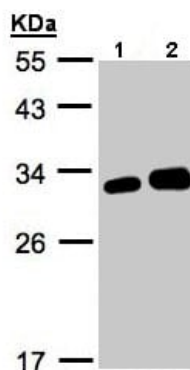
### Sequence similarities

Belongs to the protease inhibitor I47 (latexin) family.

### Cellular localization

Cytoplasm.

## Images



Western blot - Anti-LXN/TCL antibody (ab154744)

**All lanes :** Anti-LXN/TCL antibody (ab154744) at 1/1000 dilution

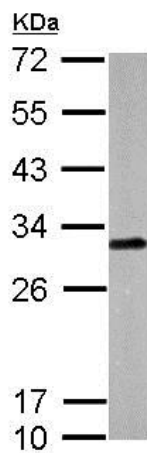
**Lane 1 :** 293T whole cell lysate

**Lane 2 :** HeLa S3 whole cell lysate

Lysates/proteins at 30 µg per lane.

**Predicted band size:** 26 kDa

12% SDS PAGE

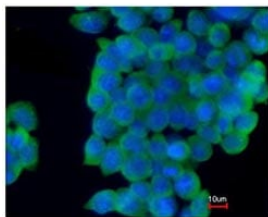
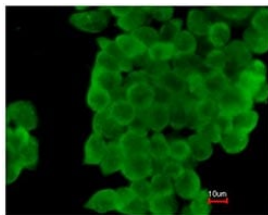


Western blot - Anti-LXN/TCI antibody (ab154744)

Anti-LXN/TCI antibody (ab154744) at 1/1000 dilution + mouse brain whole cell lysate at 50 µg

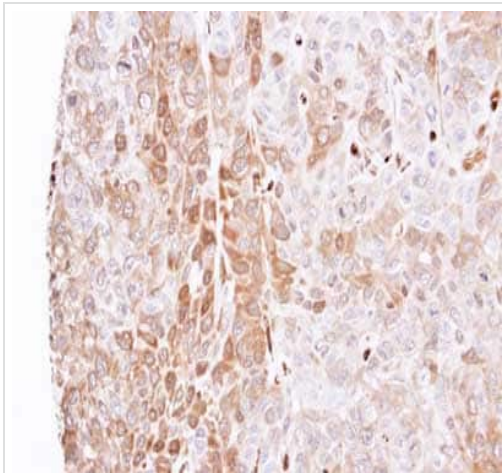
**Predicted band size:** 26 kDa

12% SDS PAGE



Immunocytochemistry/ Immunofluorescence - Anti-LXN/TCI antibody (ab154744)

Immunofluorescent analysis of paraformaldehyde-fixed mouse embryonic stem cells D3 labeling LXN/TCI with ab154744 at 1/200 dilution. Lower panel is co-stained with Hoechst 33342.



Immunohistochemical analysis of paraffin-embedded FaDu xenograft labeling LNX/TCI with ab154744 at 1/500 dilution.

Immunohistochemistry (Formalin/PFA-fixed paraffin-embedded sections) - Anti-LNX/TCI antibody (ab154744)

**Please note:** All products are "FOR RESEARCH USE ONLY. NOT FOR USE IN DIAGNOSTIC PROCEDURES"

### Our Abpromise to you: Quality guaranteed and expert technical support

---

- Replacement or refund for products not performing as stated on the datasheet
- Valid for 12 months from date of delivery
- Response to your inquiry within 24 hours
- We provide support in Chinese, English, French, German, Japanese and Spanish
- Extensive multi-media technical resources to help you
- We investigate all quality concerns to ensure our products perform to the highest standards

If the product does not perform as described on this datasheet, we will offer a refund or replacement. For full details of the Abpromise, please visit <https://www.abcam.com/abpromise> or contact our technical team.

### Terms and conditions

---

- Guarantee only valid for products bought direct from Abcam or one of our authorized distributors