



Product datasheet

Anti-LXR beta/NER antibody ab28479

★★★★★ [1 Abreviews](#) [17 References](#) [4 Images](#)

Overview

Product name	Anti-LXR beta/NER antibody
Description	Rabbit polyclonal to LXR beta/NER
Host species	Rabbit
Tested applications	Suitable for: WB, ICC/IF
Species reactivity	Reacts with: Mouse, Rat, Human
Immunogen	Synthetic peptide corresponding to Rat LXR beta/NER aa 113-126. Sequence: RYACRGSG TCQMDA (Peptide available as ab39817)  Run BLAST with  Run BLAST with
Positive control	WB: Hep G2, PC-3, 3T3-L1, HeLa, Mouse Lung, Mouse lung, Rat liver extracts. ICC/IF: C2C12 cells.
General notes	<p>The Life Science industry has been in the grips of a reproducibility crisis for a number of years. Abcam is leading the way in addressing this with our range of recombinant monoclonal antibodies and knockout edited cell lines for gold-standard validation. Please check that this product meets your needs before purchasing.</p> <p>If you have any questions, special requirements or concerns, please send us an inquiry and/or contact our Support team ahead of purchase. Recommended alternatives for this product can be found below, along with publications, customer reviews and Q&As</p>

Properties

Form	Liquid
Storage instructions	Shipped at 4°C. Upon delivery aliquot and store at -20°C. Avoid freeze / thaw cycles.
Storage buffer	Preservative: 0.05% Sodium azide Constituents: PBS, 0.1% BSA
Purity	Immunogen affinity purified
Clonality	Polyclonal
Isotype	IgG

Applications

The Abpromise guarantee

Our **Abpromise guarantee** covers the use of ab28479 in the following tested applications.

The application notes include recommended starting dilutions; optimal dilutions/concentrations should be determined by the end user.

Application	Abreviews	Notes
WB		Use a concentration of 2 µg/ml. Predicted molecular weight: 51 kDa.
ICC/IF		1/200 - 1/1000.

Target

Function

Orphan receptor. Binds preferentially to double-stranded oligonucleotide direct repeats having the consensus half-site sequence 5'-AGGTCA-3' and 4-nt spacing (DR-4). Regulates cholesterol uptake through MYLIP-dependent ubiquitination of LDLR, VLDLR and LRP8.

Tissue specificity

Ubiquitous.

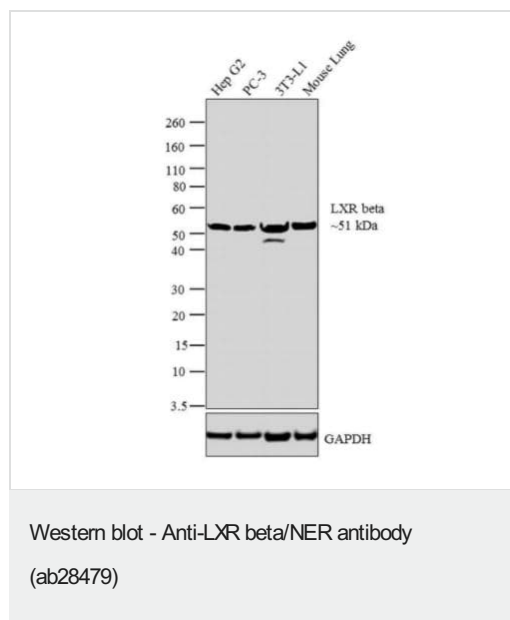
Sequence similarities

Belongs to the nuclear hormone receptor family. NR1 subfamily.
Contains 1 nuclear receptor DNA-binding domain.

Cellular localization

Nucleus.

Images



All lanes : Anti-LXR beta/NER antibody (ab28479) at 2 µg/ml

Lane 1 : Hep G2 nuclear enriched extract

Lane 2 : PC-3 nuclear enriched extract

Lane 3 : 3T3-L1 nuclear enriched extract

Lane 4 : Mouse Lung tissue extract

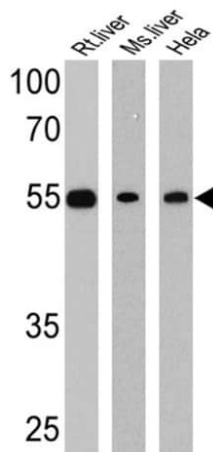
Lysates/proteins at 30 µg per lane.

Secondary

All lanes : Goat anti-Rabbit IgG (H+L) HRP conjugate at 1/4000 dilution

Predicted band size: 51 kDa

A 51 kDa band corresponding to LXR beta was observed across the cell lines and tissue tested.



Western blot - Anti-LXR beta/NER antibody
(ab28479)

All lanes : Anti-LXR beta/NER antibody (ab28479) at 1/1000 dilution

Lane 1 : Rat liver cell lysate

Lane 2 : Mouse liver cell lysate

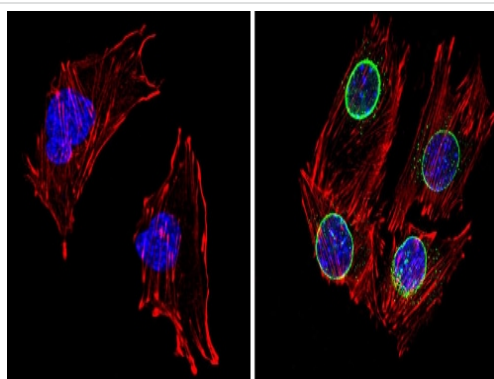
Lane 3 : HeLa cell lysate

Lysates/proteins at 25 µg per lane.

Secondary

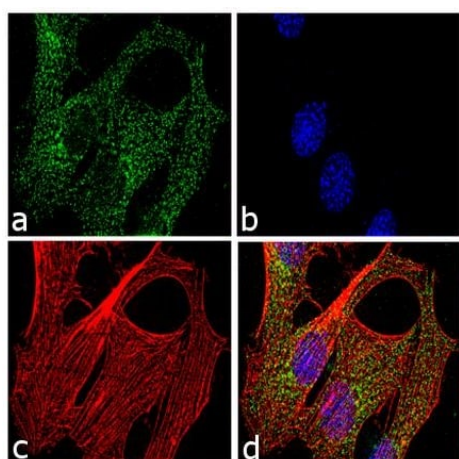
All lanes : HRP-conjugated anti-rabbit

Predicted band size: 51 kDa



Immunocytochemistry/ Immunofluorescence - Anti-LXR beta/NER antibody (ab28479)

ab28479 labelling LXR beta/NER (green) in the nuclear envelope of C2C12 cells (right) compared with a negative control (left) by Immunocytochemistry/Immunofluorescence. Formalin-fixed cells were permeabilized with 0.1% Triton X-100 in TBS for 5-10 minutes, and blocked with 3% BSA-PBS for 30 minutes at room temperature. Cells were incubated with the primary antibody (1:200 in 3% BSA-PBS) overnight at 4 °C. A DyLight 488-conjugated Goat anti-rabbit IgG was used as the secondary antibody. Red (phalloidin) - F-actin, Blue (DAPI) - nuclei. Images were taken at a magnification of 60x.



Immunocytochemistry/ Immunofluorescence - Anti-LXR beta/NER antibody (ab28479)

ab28479 staining LXR beta/NER in C2C12 cells by ICC/IF (Immunocytochemistry/immunofluorescence). Cells were fixed with 4% paraformaldehyde, permeabilized with 0.1% Triton X-100 in PBS and blocked with 1% BSA for 1 hour at room temperature. Samples were incubated with primary antibody (2µg/ml) for 3 hours at room temperature. An Alexa Fluor® 488-conjugated Goat anti-rabbit IgG polyclonal was used as the secondary antibody (1/2000). Nuclei stained blue and F-actin stained red. Panel d shows the merged image

Our Abpromise to you: Quality guaranteed and expert technical support

- Replacement or refund for products not performing as stated on the datasheet
- Valid for 12 months from date of delivery
- Response to your inquiry within 24 hours

- We provide support in Chinese, English, French, German, Japanese and Spanish
- Extensive multi-media technical resources to help you
- We investigate all quality concerns to ensure our products perform to the highest standards

If the product does not perform as described on this datasheet, we will offer a refund or replacement. For full details of the Abpromise, please visit <https://www.abcam.com/abpromise> or contact our technical team.

Terms and conditions

- Guarantee only valid for products bought direct from Abcam or one of our authorized distributors