

## Product datasheet

# Anti-Ly-6A/E (Sca-1) antibody [EPR22502-38] ab219794

Recombinant RabMAb

5 Images

### Overview

<b>Product name</b>	Anti-Ly-6A/E (Sca-1) antibody [EPR22502-38]
<b>Description</b>	Rabbit monoclonal [EPR22502-38] to Ly-6A/E (Sca-1)
<b>Host species</b>	Rabbit
<b>Tested applications</b>	<b>Suitable for:</b> WB, Flow Cyt <b>Unsuitable for:</b> ICC/IF, IHC-P or IP
<b>Species reactivity</b>	<b>Reacts with:</b> Mouse
<b>Immunogen</b>	Recombinant fragment. This information is proprietary to Abcam and/or its suppliers.
<b>Positive control</b>	WB: Mouse kidney tissue lysate. C2C12 whole cell lysate. Flow Cyt: Concanavalin A treated mouse splenocytes. Mouse bone marrow cells.
<b>General notes</b>	<p>This product is a recombinant monoclonal antibody, which offers several advantages including:</p> <ul style="list-style-type: none"><li>- High batch-to-batch consistency and reproducibility</li><li>- Improved sensitivity and specificity</li><li>- Long-term security of supply</li><li>- Animal-free production</li></ul> <p>For more information <a href="#">see here</a>.</p> <p>Our RabMAb<sup>®</sup> technology is a patented hybridoma-based technology for making rabbit monoclonal antibodies. For details on our patents, please refer to <a href="#">RabMAb<sup>®</sup> patents</a>.</p>

### Properties

<b>Form</b>	Liquid
<b>Storage instructions</b>	Shipped at 4°C. Store at +4°C short term (1-2 weeks). Upon delivery aliquot. Store at -20°C long term. Avoid freeze / thaw cycle.
<b>Storage buffer</b>	pH: 7.2 Preservative: 0.01% Sodium azide Constituents: PBS, 40% Glycerol (glycerin, glycerine), 0.05% BSA
<b>Purity</b>	Protein A purified
<b>Clonality</b>	Monoclonal
<b>Clone number</b>	EPR22502-38

Isotype

IgG

## Applications

### The Abpromise guarantee

Our **Abpromise guarantee** covers the use of ab219794 in the following tested applications.

The application notes include recommended starting dilutions; optimal dilutions/concentrations should be determined by the end user.

Application	Abreviews	Notes
WB		1/1000. Predicted molecular weight: 14 kDa.
Flow Cyt		1/500.

### Application notes

Is unsuitable for ICC/IF, IHC-P or IP.

## Target

### Function

T-cell activation.

### Tissue specificity

Widely expressed.

### Sequence similarities

Contains 1 UPAR/Ly6 domain.

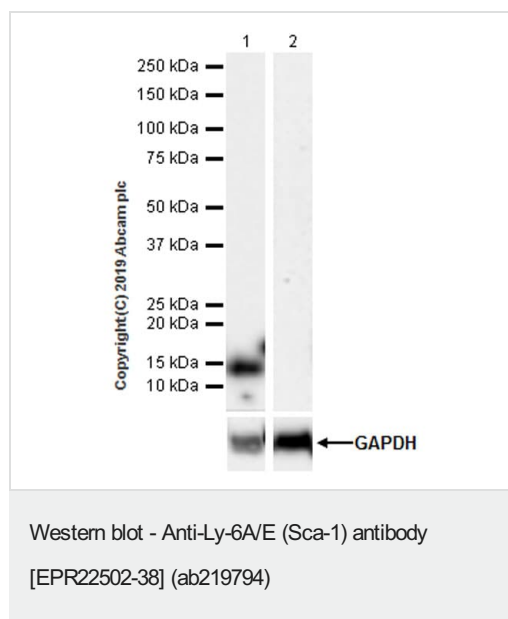
### Post-translational modifications

O-glycosylated. Not N-glycosylated.  
Not phosphorylated.

### Cellular localization

Cell membrane.

## Images



**All lanes** : Anti-Ly-6A/E (Sca-1) antibody [EPR22502-38] (ab219794) at 1/1000 dilution

**Lane 1** : Mouse kidney tissue lysate

**Lane 2** : EL4 (mouse lymphoma T lymphocyte), whole cell lysate

Lysates/proteins at 20 µg per lane.

### Secondary

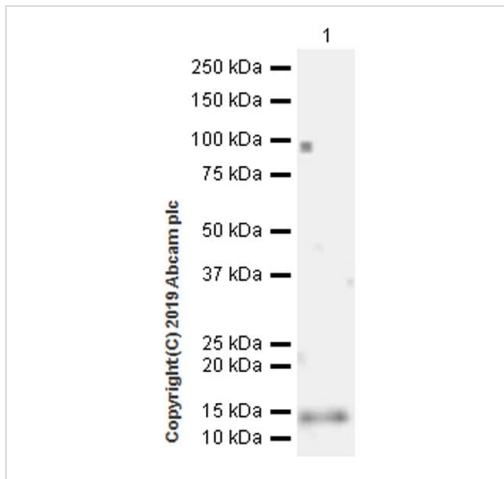
**All lanes** : Goat Anti-Rabbit IgG H&L (HRP) (**ab97051**) at 1/100000 dilution

**Predicted band size:** 14 kDa

**Exposure time:** 48 seconds

**Negative control:** EL4 (PMID: 2430016).

Blocking/Dilution buffer: 5% NFDN/TBST.



Western blot - Anti-Ly-6A/E (Sca-1) antibody [EPR22502-38] (ab219794)

Anti-Ly-6A/E (Sca-1) antibody [EPR22502-38] (ab219794) at 1/1000 dilution + C2C12 (mouse myoblasts myoblast), whole cell lysate at 20  $\mu$ g

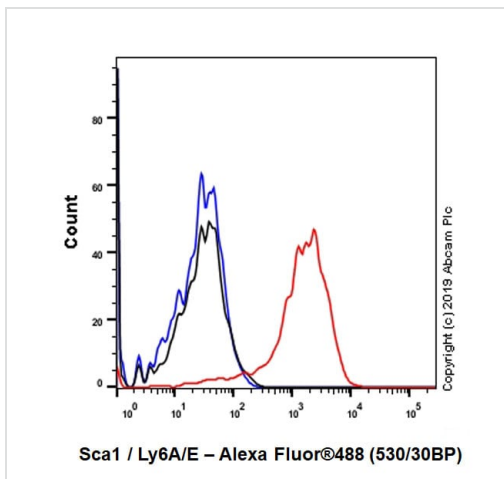
### Secondary

VeriBlot for IP Detection Reagent (HRP) ([ab131366](#)) at 1/1000 dilution

**Predicted band size:** 14 kDa

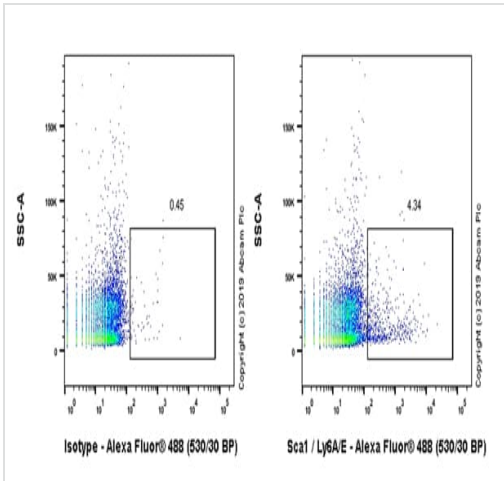
This blot was developed using a higher sensitivity ECL substrate.

Blocking/Dilution buffer: 5% NFDN/TBST.



Flow Cytometry - Anti-Ly-6A/E (Sca-1) antibody [EPR22502-38] (ab219794)

Flow cytometric analysis of mouse splenocytes treated with 2.5  $\mu$ g/ml Concanavalin A (ConA) for 72h labeling Ly-6A/E (Sca-1) with ab219794 at 1/500 (red) compared with a Rabbit monoclonal IgG ([ab172730](#)) (black) and an unlabeled control (cells without incubation with primary antibody and secondary antibody) (blue). Goat anti rabbit IgG (Alexa Fluor<sup>®</sup> 488, [ab150077](#)), at 1/2000 dilution was used as the secondary antibody. Gated on viable cells.



Flow cytometric analysis of mouse bone marrow cells labeling Ly-6A/E (Sca1) with ab219794 at 1/500 (right panel) compared with a Rabbit monoclonal IgG (**ab172730**) (left panel). Goat anti rabbit IgG (Alexa Fluor® 488, **ab150077**), at 1/2000 dilution was used as the secondary antibody. Gated on viable cells.

Flow Cytometry - Anti-Ly-6A/E (Sca-1) antibody  
[EPR22502-38] (ab219794)

Why choose a recombinant antibody?

- Research with confidence**  
Consistent and reproducible results
- Long-term and scalable supply**  
Recombinant technology
- Success from the first experiment**  
Confirmed specificity
- Ethical standards compliant**  
Animal-free production

Anti-Ly-6A/E (Sca-1) antibody [EPR22502-38]  
(ab219794)

**Please note:** All products are "FOR RESEARCH USE ONLY. NOT FOR USE IN DIAGNOSTIC PROCEDURES"

### Our Abpromise to you: Quality guaranteed and expert technical support

- Replacement or refund for products not performing as stated on the datasheet
- Valid for 12 months from date of delivery
- Response to your inquiry within 24 hours
- We provide support in Chinese, English, French, German, Japanese and Spanish
- Extensive multi-media technical resources to help you
- We investigate all quality concerns to ensure our products perform to the highest standards

If the product does not perform as described on this datasheet, we will offer a refund or replacement. For full details of the Abpromise, please visit <https://www.abcam.com/abpromise> or contact our technical team.

## Terms and conditions

---

- Guarantee only valid for products bought direct from Abcam or one of our authorized distributors