



Product datasheet

Anti-Ly-6K antibody [CL2433] ab211873

3 Images

Overview

Product name	Anti-Ly-6K antibody [CL2433]
Description	Mouse monoclonal [CL2433] to Ly-6K
Host species	Mouse
Tested applications	Suitable for: IHC-P, WB
Species reactivity	Reacts with: Human
Immunogen	Recombinant fragment corresponding to Human Ly-6K aa 1-150. Database link: Q17RY6
	 Run BLAST with  Run BLAST with
Epitope	Binds to an epitope located within the peptide sequence LEEPMPFFYLKCKI (104-118 aa) as determined by overlapping synthetic peptides.
Positive control	Human testis tissue lysate; Human testis tissue.
General notes	<p>The Life Science industry has been in the grips of a reproducibility crisis for a number of years. Abcam is leading the way in addressing this with our range of recombinant monoclonal antibodies and knockout edited cell lines for gold-standard validation. Please check that this product meets your needs before purchasing.</p> <p>If you have any questions, special requirements or concerns, please send us an inquiry and/or contact our Support team ahead of purchase. Recommended alternatives for this product can be found below, along with publications, customer reviews and Q&As</p>

Properties

Form	Liquid
Storage instructions	Shipped at 4°C. Store at +4°C short term (1-2 weeks). Upon delivery aliquot. Store at -20°C long term. Avoid freeze / thaw cycle.
Storage buffer	pH: 7.20 Preservative: 0.02% Sodium azide Constituents: 40% Glycerol (glycerin, glycerine), 59% PBS
Purity	Protein A purified
Clonality	Monoclonal
Clone number	CL2433
Isotype	IgG1

Applications

The Abpromise guarantee

Our **Abpromise guarantee** covers the use of ab211873 in the following tested applications.

The application notes include recommended starting dilutions; optimal dilutions/concentrations should be determined by the end user.

Application	Abreviews	Notes
IHC-P		1/200 - 1/500. Perform heat mediated antigen retrieval with citrate buffer pH 6 before commencing with IHC staining protocol.
WB		1/100 - 1/250. Predicted molecular weight: 25 kDa.

Target

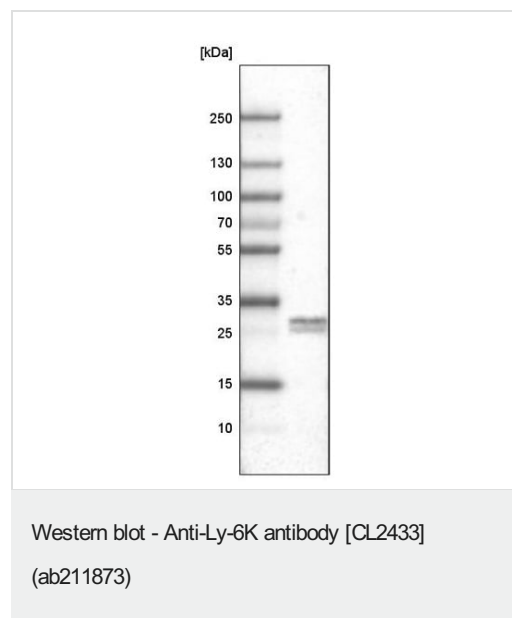
Relevance

The Lymphocyte Antigen 6 Complex is a 15 kDa phosphatidyl inositol anchored molecule, attached to the cell membrane by a GPI-anchor. The Lymphocyte Antigen 6 Complex is present on most immature T cells of the thymus, on lymphoid cells in bone marrow and peripheral B cells, but absent on peripheral T cells.

Cellular localization

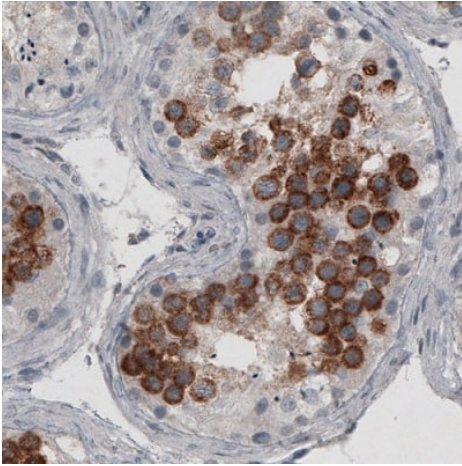
Cell Membrane

Images



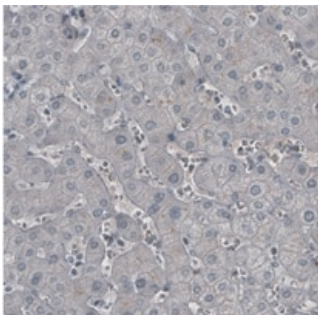
Anti-Ly-6K antibody [CL2433] (ab211873) at 1/100 dilution +
Human testis tissue lysate

Predicted band size: 25 kDa



Immunohistochemical analysis of paraffin-embedded, formalin fixed Human testis tissue labeling Ly-6K with ab211873 at 1/200 dilution.

Immunohistochemistry (Formalin/PFA-fixed paraffin-embedded sections) - Anti-Ly-6K antibody [CL2433] (ab211873)



Negative control: Immunohistochemical analysis of paraffin-embedded, formalin fixed Human liver tissue labeling Ly-6K with ab211873 at 1/200 dilution showing absence of staining.

Immunohistochemistry (Formalin/PFA-fixed paraffin-embedded sections) - Anti-Ly-6K antibody [CL2433] (ab211873)

Please note: All products are "FOR RESEARCH USE ONLY. NOT FOR USE IN DIAGNOSTIC PROCEDURES"

Our Abpromise to you: Quality guaranteed and expert technical support

- Replacement or refund for products not performing as stated on the datasheet
- Valid for 12 months from date of delivery
- Response to your inquiry within 24 hours
- We provide support in Chinese, English, French, German, Japanese and Spanish
- Extensive multi-media technical resources to help you

- We investigate all quality concerns to ensure our products perform to the highest standards

If the product does not perform as described on this datasheet, we will offer a refund or replacement. For full details of the Abpromise, please visit <https://www.abcam.com/abpromise> or contact our technical team.

Terms and conditions

- Guarantee only valid for products bought direct from Abcam or one of our authorized distributors