

Product datasheet

Anti-LY6E/SCA-2 antibody ab172021

1 Image

Overview

| | |
|----------------------------|--|
| Product name | Anti-LY6E/SCA-2 antibody |
| Description | Rabbit polyclonal to LY6E/SCA-2 |
| Host species | Rabbit |
| Tested applications | Suitable for: WB |
| Species reactivity | Reacts with: Human |
| Immunogen | Recombinant full length protein corresponding to Human LY6E/SCA-2 aa 1-131. (NP_002337.1) Sequence: MKIFLPVLLAALLGVERASSLMCFSCLNQKSNLYCLKPTIC SDQDNYCVT VSASAGIGNLVTFGHSLSKTCSPACPIPEGVN/VGVASMG ISCCQSFLCNF SAADGGLRASVTLLGAGLLLSLLPALLRFGP |

Database link: [Q16553](#)

 [Run BLAST with](#)

 [Run BLAST with](#)

Positive control WB: LY6E/SCA-2 transfected lysate.

General notes

The Life Science industry has been in the grips of a reproducibility crisis for a number of years. Abcam is leading the way in addressing this with our range of recombinant monoclonal antibodies and knockout edited cell lines for gold-standard validation. Please check that this product meets your needs before purchasing.

If you have any questions, special requirements or concerns, please send us an inquiry and/or contact our Support team ahead of purchase. Recommended alternatives for this product can be found below, along with publications, customer reviews and Q&As

Properties

| | |
|-----------------------------|---|
| Form | Liquid |
| Storage instructions | Shipped at 4°C. Store at +4°C short term (1-2 weeks). Upon delivery aliquot. Store at -20°C long term. Avoid freeze / thaw cycle. |
| Storage buffer | pH: 7.4 Constituent: 100% PBS |

| | |
|------------------|--------------------|
| Purity | Protein A purified |
| Clonality | Polyclonal |
| Isotype | IgG |

Applications

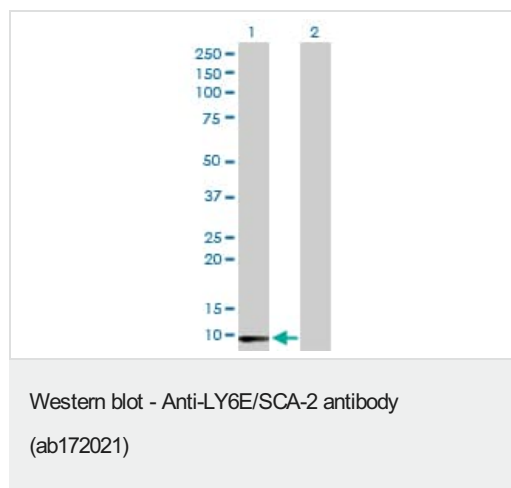
The Abpromise guarantee Our **Abpromise guarantee** covers the use of ab172021 in the following tested applications. The application notes include recommended starting dilutions; optimal dilutions/concentrations should be determined by the end user.

| Application | Abreviews | Notes |
|-------------|-----------|---|
| WB | | Use a concentration of 1 µg/ml. Predicted molecular weight: 14 kDa. |

Target

| | |
|------------------------------|--|
| Tissue specificity | Widely expressed, predominantly in liver, kidney, ovary, spleen and peripheral blood Leukocytes. |
| Sequence similarities | Contains 1 UPAR/Ly6 domain. |
| Cellular localization | Cell membrane. |

Images



All lanes : Anti-LY6E/SCA-2 antibody (ab172021) at 1 µg/ml

Lane 1 : LY6E/SCA-2 transfected lysate

Lane 2 : Non-transfected lysate

Lysates/proteins at 15 µl per lane.

Secondary

All lanes : Goat Anti-Rabbit IgG (H+L), Peroxidase Conjugated at 1/7500 dilution

Predicted band size: 14 kDa

Please note: All products are "FOR RESEARCH USE ONLY. NOT FOR USE IN DIAGNOSTIC PROCEDURES"

Our Abpromise to you: Quality guaranteed and expert technical support

- Replacement or refund for products not performing as stated on the datasheet
- Valid for 12 months from date of delivery

- Response to your inquiry within 24 hours
- We provide support in Chinese, English, French, German, Japanese and Spanish
- Extensive multi-media technical resources to help you
- We investigate all quality concerns to ensure our products perform to the highest standards

If the product does not perform as described on this datasheet, we will offer a refund or replacement. For full details of the Abpromise, please visit <https://www.abcam.com/abpromise> or contact our technical team.

Terms and conditions

- Guarantee only valid for products bought direct from Abcam or one of our authorized distributors