

Product datasheet

Anti-Ly6g + Ly6c antibody [RB6-8C5] ab25377

★★★★★ [5 Abreviews](#) [172 References](#) [1 Image](#)

Overview

Product name	Anti-Ly6g + Ly6c antibody [RB6-8C5]
Description	Rat monoclonal [RB6-8C5] to Ly6g + Ly6c
Host species	Rat
Tested applications	Suitable for: IHC-Fr, Flow Cyt, IHC-P
Species reactivity	Reacts with: Mouse
Immunogen	<p>This product was produced with the following immunogens:</p> <p>Tissue, cells or virus corresponding to Mouse Ly6g. Database link: P35461</p> <p>Tissue, cells or virus corresponding to Mouse Ly6c. Database link: P0CW02</p>
General notes	<p>This product was changed from ascites to tissue culture supernatant on 2nd March 2020. Lot numbers higher than GR3218400 are from tissue culture supernatant. Please note that the dilutions may need to be adjusted accordingly. If you have any questions, please do not hesitate to contact our scientific support team.</p> <p>The Life Science industry has been in the grips of a reproducibility crisis for a number of years. Abcam is leading the way in addressing this with our range of recombinant monoclonal antibodies and knockout edited cell lines for gold-standard validation. Please check that this product meets your needs before purchasing.</p> <p>If you have any questions, special requirements or concerns, please send us an inquiry and/or contact our Support team ahead of purchase. Recommended alternatives for this product can be found below, along with publications, customer reviews and Q&As</p>

Properties

Form	Liquid
Storage instructions	Shipped at 4°C. Store at +4°C short term (1-2 weeks). Upon delivery aliquot. Store at -20°C long term. Avoid freeze / thaw cycle.
Storage buffer	pH: 8.20 Constituent: 100% Borate buffered saline
Purity	Tissue culture supernatant

Clonality	Monoclonal
Clone number	RB6-8C5
Isotype	IgG2b
Light chain type	kappa

Applications

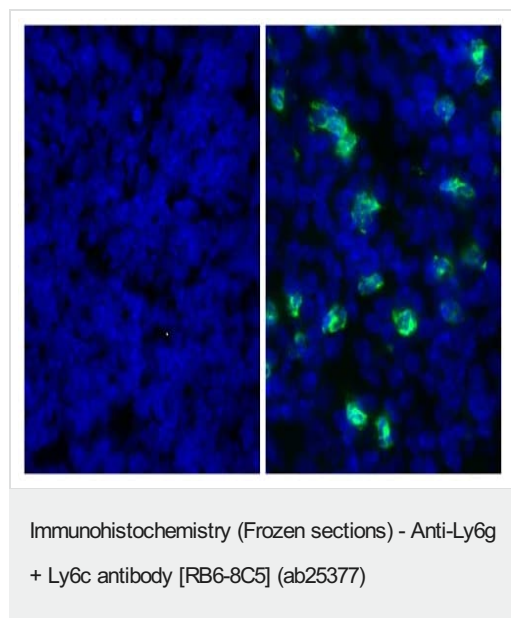
The Abpromise guarantee Our **Abpromise guarantee** covers the use of ab25377 in the following tested applications. The application notes include recommended starting dilutions; optimal dilutions/concentrations should be determined by the end user.

Application	Abreviews	Notes
IHC-Fr		Use at an assay dependent concentration.
Flow Cyt		Use at an assay dependent concentration.
IHC-P	★★★★★ (4)	Use at an assay dependent concentration. PubMed: 25126943

Target

Cellular localization Ly6g: Attached to the membrane by a GPI-anchor. Ly6c: Cell membrane; Lipid-anchor, GPI-anchor.

Images



Immunohistochemistry (Frozen sections) analysis of Mouse frozen spleen tissue labeling Ly6g with ab25377. Right: Rat Anti-Mouse Ly-6G-UNLB followed by Mouse Anti-Rat IgG2b-FITC. Left: Isotype Control, Rat IgG2b-UNLB followed by Mouse Anti-Rat IgG2b-FITC. Blue - DAPI.

This image was generated using the ascites version of the product.

Please note: All products are "FOR RESEARCH USE ONLY. NOT FOR USE IN DIAGNOSTIC PROCEDURES"

Our Abpromise to you: Quality guaranteed and expert technical support

- Replacement or refund for products not performing as stated on the datasheet
- Valid for 12 months from date of delivery
- Response to your inquiry within 24 hours

- We provide support in Chinese, English, French, German, Japanese and Spanish
- Extensive multi-media technical resources to help you
- We investigate all quality concerns to ensure our products perform to the highest standards

If the product does not perform as described on this datasheet, we will offer a refund or replacement. For full details of the Abpromise, please visit <https://www.abcam.com/abpromise> or contact our technical team.

Terms and conditions

- Guarantee only valid for products bought direct from Abcam or one of our authorized distributors