


### Anti-Lyn antibody ab227170

3 Images

#### Overview

|                            |   |
|----------------------------|---|
| <b>Product name</b>        | Anti-Lyn antibody   |
| <b>Description</b>         | Rabbit polyclonal to Lyn  |
| <b>Host species</b>        | Rabbit  |
| <b>Tested applications</b> | <b>Suitable for:</b> ICC/IF, IP, WB   |
| <b>Species reactivity</b>  | <b>Reacts with:</b> Human<br><b>Predicted to work with:</b> Mouse, Rat, Sheep, Cow   |
| <b>Immunogen</b>           | Recombinant fragment within Human Lyn (internal sequence). The exact sequence is proprietary.<br>Database link: <a href="#">P07948</a>  |
| <b>Positive control</b>    | WB: THP-1 whole cell lysate. IP: K562 whole cell extract. ICC/IF: A431 cells.   |
| <b>General notes</b>       | <p>The Life Science industry has been in the grips of a reproducibility crisis for a number of years. Abcam is leading the way in addressing this with our range of recombinant monoclonal antibodies and knockout edited cell lines for gold-standard validation. Please check that this product meets your needs before purchasing.</p> <p>If you have any questions, special requirements or concerns, please send us an inquiry and/or contact our Support team ahead of purchase. Recommended alternatives for this product can be found below, along with publications, customer reviews and Q&amp;As</p> |

#### Properties

|                             |   |
|-----------------------------|---|
| <b>Form</b>                 | Liquid  |
| <b>Storage instructions</b> | Shipped at 4°C. Store at +4°C short term (1-2 weeks). Upon delivery aliquot. Store at -20°C long term. Avoid freeze / thaw cycle. |
| <b>Storage buffer</b>       | pH: 7.00<br>Preservative: 0.01% Thimerosal (merthiolate)<br>Constituents: 78.99% PBS, 1% BSA, 20% Glycerol (glycerin, glycerine)  |
| <b>Purity</b>               | Immunogen affinity purified   |
| <b>Clonality</b>            | Polyclonal  |
| <b>Isotype</b>              | IgG   |

#### Applications

## The Abpromise guarantee

Our **Abpromise guarantee** covers the use of ab227170 in the following tested applications.

The application notes include recommended starting dilutions; optimal dilutions/concentrations should be determined by the end user.

| Application | Abreviews | Notes   |
|-------------|-----------|---|
| ICC/IF      |           | 1/100 - 1/1000.                                     |
| IP          |           | 1/100 - 1/500.                                      |
| WB          |           | 1/500 - 1/3000. Predicted molecular weight: 59 kDa. |

## Target

### Function

Down regulates expression of stem cell growth factor receptor (KIT). Acts as an effector of EpoR (erythropoietin receptor) in controlling KIT expression and may play a central role in erythroid differentiation during the switch between proliferation and maturation (By similarity). Acts as a positive regulator of cell movement while negatively regulating adhesion to stromal cells by inhibiting the ICAM-1-binding activity of beta-2 integrins. Acts as the mediator that relays suppressing signals from the chemokine receptor CXCR4 to beta-2 integrin LFA-1 in hematopoietic precursors. Involved in induction of stress-activated protein kinase (SAPK), but not ERK or p38 MAPK, in response to genotoxic agents. Induces SAPK by a MKK7- and MEKK1-dependent mechanism. The LYN -> MEKK1 -> MKK7 -> SAPK pathway is functional in the induction of apoptosis by genotoxic agents.

### Tissue specificity

Widely expressed in a variety of organs, tissues, and cell types such as epidermoid, hematopoietic, and neuronal cells. Expressed in primary neuroblastoma tumors.

### Sequence similarities

Belongs to the protein kinase superfamily. Tyr protein kinase family. SRC subfamily. Contains 1 protein kinase domain. Contains 1 SH2 domain. Contains 1 SH3 domain.

### Domain

The protein kinase domain plays an important role in its localization in the cell membrane.

### Post-translational modifications

Ubiquitinated. Ubiquitination is SH3-dependent.

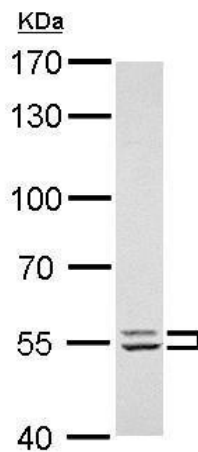
### Cellular localization

Cell membrane. Nucleus. Cytoplasm. Cytoplasm > perinuclear region. Golgi apparatus. Accumulates in the nucleus by inhibition of CRM1-mediated nuclear export. Nuclear accumulation is increased by inhibition of its kinase activity. The trafficking from the Golgi apparatus to the plasma membrane occurs in a kinase domain-dependent but kinase activity independent manner and is mediated by exocytic vesicular transport.

### Form

This protein is known to be similar in amino acid sequence to HCK (P08631), LCK (P06239), FYN (P06241), YES1 (P07947), and SRC (P12931). Therefore, cross-reactivity with these homologous proteins may be observed. We would be happy to provide immunogen alignment information upon request.

## Images

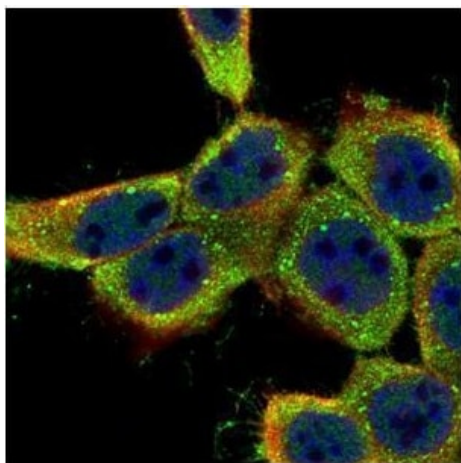


Western blot - Anti-Lyn antibody (ab227170)

Anti-Lyn antibody (ab227170) at 1/1000 dilution + THP-1 (human monocytic leukemia cell line) whole cell lysate at 30 µg

**Predicted band size:** 59 kDa

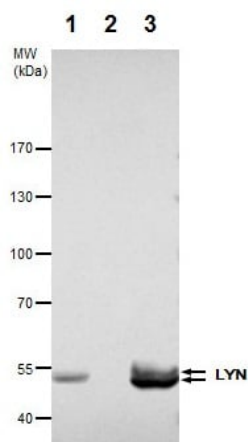
7.5 % SDS-PAGE gel.



Immunocytochemistry/ Immunofluorescence - Anti-Lyn antibody (ab227170)

PFA-fixed A431 (human epidermoid carcinoma cell line) cells stained for Lyn (green) using ab227170 at 1/500 dilution in ICC/IF.

Counterstain: Alpha-tubulin filaments were labeled with an alpha Tubulin antibody (red) at 1/2000 dilution.



Immunoprecipitation - Anti-Lyn antibody (ab227170)

Lyn was immunoprecipitated from K562 (human chronic myelogenous leukemia cell line from bone marrow) whole cell extract with 4 µg of ab227170. Western blot was performed from the immunoprecipitate using ab227170 at 1/500 dilution. An Anti-Rabbit IgG was used as secondary antibody.

**Lane 1:** K562 whole cell lysate 40 µg (Input).

**Lane 2:** Rabbit IgG instead of ab227170 in K562 whole cell lysate.

**Lane 3:** ab227170 IP in K562 whole cell lysate.

**Please note:** All products are "FOR RESEARCH USE ONLY. NOT FOR USE IN DIAGNOSTIC PROCEDURES"

### **Our Abpromise to you: Quality guaranteed and expert technical support**

---

- Replacement or refund for products not performing as stated on the datasheet
- Valid for 12 months from date of delivery
- Response to your inquiry within 24 hours
  
- We provide support in Chinese, English, French, German, Japanese and Spanish
- Extensive multi-media technical resources to help you
- We investigate all quality concerns to ensure our products perform to the highest standards

If the product does not perform as described on this datasheet, we will offer a refund or replacement. For full details of the Abpromise, please visit <https://www.abcam.com/abpromise> or contact our technical team.

### **Terms and conditions**

---

- Guarantee only valid for products bought direct from Abcam or one of our authorized distributors