

## Product datasheet

### Anti-LYPD3 antibody [EPR9106] ab155080

Recombinant RabMAb

#### 2 Images

#### Overview

<b>Product name</b>	Anti-LYPD3 antibody [EPR9106]
<b>Description</b>	Rabbit monoclonal [EPR9106] to LYPD3
<b>Host species</b>	Rabbit
<b>Tested applications</b>	<b>Suitable for:</b> WB <b>Unsuitable for:</b> Flow Cyt, ICC/IF, IHC-P or IP
<b>Species reactivity</b>	<b>Reacts with:</b> Human
<b>Immunogen</b>	Synthetic peptide within Human LYPD3. The exact sequence is proprietary. Database link: <a href="#">O95274</a>
<b>Positive control</b>	HACAT cell lysate; BxPC-3 cell lysate and cells.
<b>General notes</b>	This product is a recombinant monoclonal antibody, which offers several advantages including: <ul style="list-style-type: none"> <li>- High batch-to-batch consistency and reproducibility</li> <li>- Improved sensitivity and specificity</li> <li>- Long-term security of supply</li> <li>- Animal-free production</li> </ul> For more information <a href="#">see here</a> . Our RabMAb® technology is a patented hybridoma-based technology for making rabbit monoclonal antibodies. For details on our patents, please refer to <a href="#">RabMAb® patents</a> .  Mouse, Rat: We have preliminary internal testing data to indicate this antibody may not react with these species. Please contact us for more information.

#### Properties

<b>Form</b>	Liquid
<b>Storage instructions</b>	Shipped at 4°C. Upon delivery aliquot and store at -20°C. Avoid repeated freeze / thaw cycles.
<b>Storage buffer</b>	pH: 7.2 Preservative: 0.01% Sodium azide Constituents: 9% PBS, 40% Glycerol (glycerin, glycerine), 0.05% BSA, 50% Tissue culture supernatant
<b>Purity</b>	Tissue culture supernatant

<b>Clonality</b>	Monoclonal
<b>Clone number</b>	EPR9106
<b>Isotype</b>	IgG

## Applications

**The Abpromise guarantee** Our **Abpromise guarantee** covers the use of ab155080 in the following tested applications. The application notes include recommended starting dilutions; optimal dilutions/concentrations should be determined by the end user.

Application	Abreviews	Notes
<b>WB</b>		1/1000 - 1/10000. Detects a band of approximately 90 kDa (predicted molecular weight: 36 kDa).

**Application notes** Is unsuitable for Flow Cyt, ICC/IF, IHC-P or IP.

## Target

**Function** Supports cell migration. May be involved in urothelial cell-matrix interactions. May be involved in tumor progression.

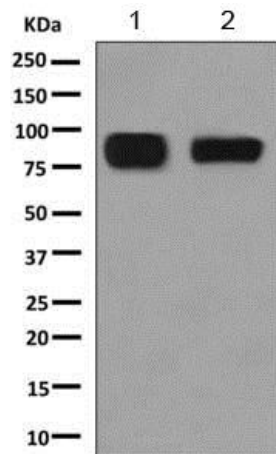
**Tissue specificity** Expressed in placenta, skin and urothelium. Found in suprabasal keratinocytes of chronic wounds. Weak expression is found in esophagus and peripheral blood mononuclear cells. Found in the majority of primary and metastatic transitional cell carcinomas (TCCs) and as well in breast cancer tissues, but not in adjacent normal tissues. High expression is found in the tumor component of some noninvasive superficial lesions and in invasive and metastatic urothelial cancers.

**Sequence similarities** Contains 2 UPAR/Ly6 domains.

**Post-translational modifications** N-glycosylated and O-glycosylated.

**Cellular localization** Cell membrane.

## Images



Western blot - Anti-LYPD3 antibody [EPR9106]  
(ab155080)

**All lanes :** Anti-LYPD3 antibody [EPR9106] (ab155080) at 1/1000 dilution

**Lane 1 :** HACAT cell lysate

**Lane 2 :** BxPC-3 cell lysate

Lysates/proteins at 10 µg per lane.

**Predicted band size:** 36 kDa

Why choose a  
recombinant antibody?



**Research with confidence**  
Consistent and reproducible results



**Long-term and scalable supply**  
Recombinant technology



**Success from the first experiment**  
Confirmed specificity



**Ethical standards compliant**  
Animal-free production

Anti-LYPD3 antibody [EPR9106] (ab155080)

**Please note:** All products are "FOR RESEARCH USE ONLY. NOT FOR USE IN DIAGNOSTIC PROCEDURES"

### Our Abpromise to you: Quality guaranteed and expert technical support

- Replacement or refund for products not performing as stated on the datasheet
- Valid for 12 months from date of delivery
- Response to your inquiry within 24 hours
- We provide support in Chinese, English, French, German, Japanese and Spanish
- Extensive multi-media technical resources to help you
- We investigate all quality concerns to ensure our products perform to the highest standards

If the product does not perform as described on this datasheet, we will offer a refund or replacement. For full details of the Abpromise, please visit <https://www.abcam.com/abpromise> or contact our technical team.

## Terms and conditions

---

- Guarantee only valid for products bought direct from Abcam or one of our authorized distributors