


Product datasheet

Anti-LYPD3 antibody [SP208] ab183357

Recombinant RabMAb

11 Images

Overview

Product name	Anti-LYPD3 antibody [SP208]
Description	Rabbit monoclonal [SP208] to LYPD3
Host species	Rabbit
Tested applications	Suitable for: IHC-P
Species reactivity	Reacts with: Human Predicted to work with: Mouse, Rat 
Immunogen	Synthetic peptide. This information is proprietary to Abcam and/or its suppliers.
Positive control	IHC-P: Human skin, esophagus, tonsil, bladder, cervix, breast ductal carcinoma, skin squamous cell carcinoma, and cervical squamous cell carcinoma tissue.
General notes	<p>This product is a recombinant monoclonal antibody, which offers several advantages including:</p> <ul style="list-style-type: none">- High batch-to-batch consistency and reproducibility- Improved sensitivity and specificity- Long-term security of supply- Animal-free production <p>For more information see here.</p> <p>This product is FOR RESEARCH USE ONLY. For commercial use, please contact partnerships@abcam.com.</p>

Properties

Form	Liquid
Storage instructions	Shipped at 4°C. Store at +4°C short term (1-2 weeks). Upon delivery aliquot. Store at -20°C long term. Avoid freeze / thaw cycle.
Storage buffer	pH: 7.60 Preservative: 0.1% Sodium azide Constituents: PBS, 1% BSA
Purity	Protein A/G purified
Purification notes	Purified from TCS by protein A/G.
Clonality	Monoclonal

Clone number SP208

Isotype IgG

Applications

The Abpromise guarantee Our **Abpromise guarantee** covers the use of ab183357 in the following tested applications.

The application notes include recommended starting dilutions; optimal dilutions/concentrations should be determined by the end user.

Application	Abreviews	Notes
IHC-P		1/100. Perform heat mediated antigen retrieval with citrate buffer pH 6 before commencing with IHC staining protocol.

Target

Function Supports cell migration. May be involved in urothelial cell-matrix interactions. May be involved in tumor progression.

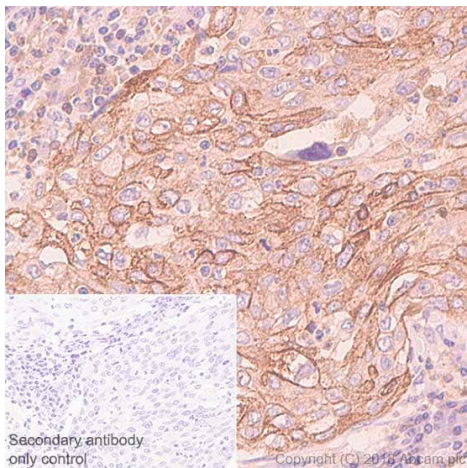
Tissue specificity Expressed in placenta, skin and urothelium. Found in suprabasal keratinocytes of chronic wounds. Weak expression is found in esophagus and peripheral blood mononuclear cells. Found in the majority of primary and metastatic transitional cell carcinomas (TCCs) and as well in breast cancer tissues, but not in adjacent normal tissues. High expression is found in the tumor component of some noninvasive superficial lesions and in invasive and metastatic urothelial cancers.

Sequence similarities Contains 2 UPAR/Ly6 domains.

Post-translational modifications N-glycosylated and O-glycosylated.

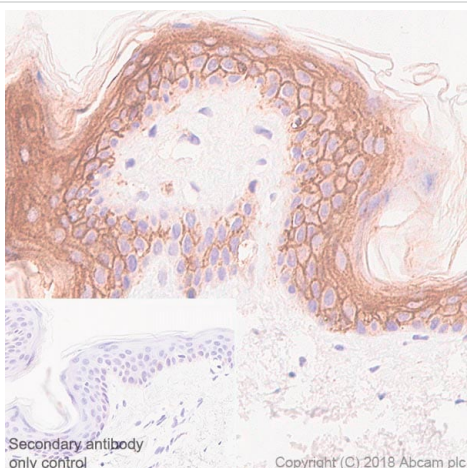
Cellular localization Cell membrane.

Images



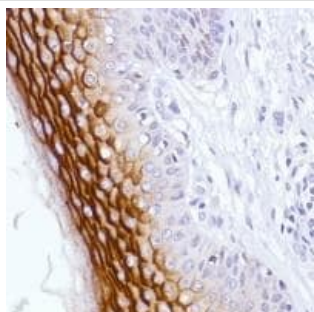
Immunohistochemistry (Formalin/PFA-fixed paraffin-embedded sections) - Anti-LYPD3 antibody [SP208] (ab183357)

Immunohistochemistry (Formalin/PFA-fixed paraffin-embedded sections) analysis of Human cervix carcinoma tissue sections labeling LYPD3 with ab183357 at 1/100 dilution (4.65 µg/ml). Heat mediated antigen retrieval was performed Heat mediated antigen retrieval with sodium citrate buffer (pH 6.0, epitope retrieval solution 1) for 20 mins. Rabbit specific IHC polymer detection kit HRP/DAB (**ab209101**) was used as the secondary antibody. Negative control: PBS instead of the primary antibody. Hematoxylin was used as a counterstain.



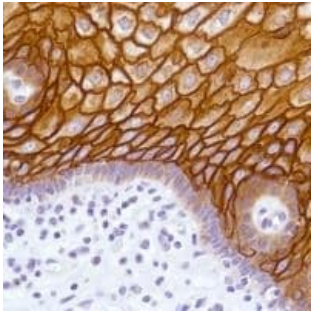
Immunohistochemistry (Formalin/PFA-fixed paraffin-embedded sections) - Anti-LYPD3 antibody [SP208] (ab183357)

Immunohistochemistry (Formalin/PFA-fixed paraffin-embedded sections) analysis of Human skin tissue sections labeling LYPD3 with ab183357 at 1/100 dilution (4.65 µg/ml). Heat mediated antigen retrieval was performed Heat mediated antigen retrieval with sodium citrate buffer (pH 6.0, epitope retrieval solution 1) for 20 mins. Rabbit specific IHC polymer detection kit HRP/DAB (**ab209101**) was used as the secondary antibody. Negative control: PBS instead of the primary antibody. Hematoxylin was used as a counterstain.



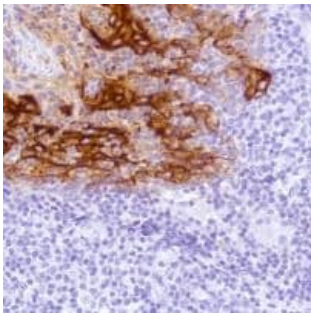
Immunohistochemistry (Formalin/PFA-fixed paraffin-embedded sections) - Anti-LYPD3 antibody [SP208] (ab183357)

Immunohistochemical analysis of formalin-fixed, paraffin-embedded Human skin tissue labeling LYPD3 with ab183357 at 1/100 dilution.



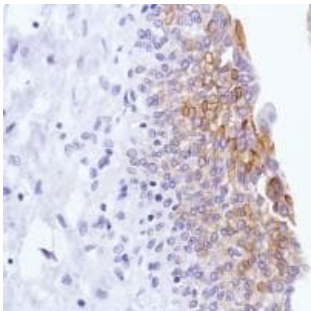
Immunohistochemistry (Formalin/PFA-fixed paraffin-embedded sections) - Anti-LYPD3 antibody [SP208] (ab183357)

Immunohistochemical analysis of formalin-fixed, paraffin-embedded Human esophagus tissue labeling LYPD3 with ab183357 at 1/100 dilution.



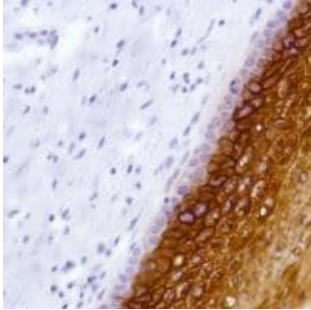
Immunohistochemistry (Formalin/PFA-fixed paraffin-embedded sections) - Anti-LYPD3 antibody [SP208] (ab183357)

Immunohistochemical analysis of formalin-fixed, paraffin-embedded Human tonsil tissue labeling LYPD3 with ab183357 at 1/100 dilution.



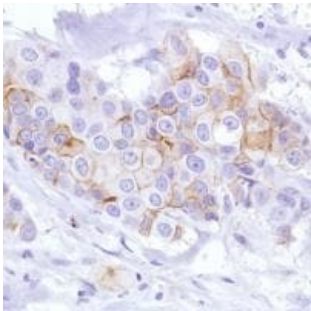
Immunohistochemistry (Formalin/PFA-fixed paraffin-embedded sections) - Anti-LYPD3 antibody [SP208] (ab183357)

Immunohistochemical analysis of formalin-fixed, paraffin-embedded Human bladder tissue labeling LYPD3 with ab183357 at 1/100 dilution.



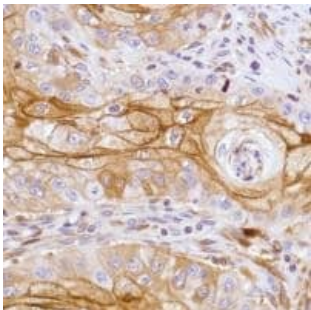
Immunohistochemical analysis of formalin-fixed, paraffin-embedded Human cervix tissue labeling LYPD3 with ab183357 at 1/100 dilution.

Immunohistochemistry (Formalin/PFA-fixed paraffin-embedded sections) - Anti-LYPD3 antibody [SP208] (ab183357)



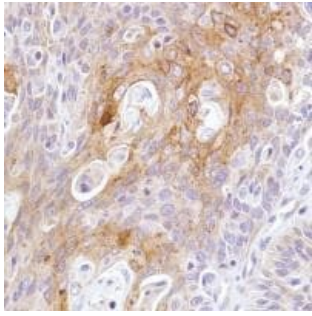
Immunohistochemical analysis of formalin-fixed, paraffin-embedded Human breast ductal cell carcinoma tissue labeling LYPD3 with ab183357 at 1/100 dilution.

Immunohistochemistry (Formalin/PFA-fixed paraffin-embedded sections) - Anti-LYPD3 antibody [SP208] (ab183357)



Immunohistochemical analysis of formalin-fixed, paraffin-embedded Human skin squamous cell carcinoma tissue labeling LYPD3 with ab183357 at 1/100 dilution.

Immunohistochemistry (Formalin/PFA-fixed paraffin-embedded sections) - Anti-LYPD3 antibody [SP208] (ab183357)



Immunohistochemical analysis of formalin-fixed, paraffin-embedded Human cervical squamous cell carcinoma tissue labeling LYPD3 with ab183357 at 1/100 dilution.

Immunohistochemistry (Formalin/PFA-fixed paraffin-embedded sections) - Anti-LYPD3 antibody [SP208] (ab183357)

Why choose a recombinant antibody?



Research with confidence
Consistent and reproducible results



Long-term and scalable supply
Recombinant technology



Success from the first experiment
Confirmed specificity



Ethical standards compliant
Animal-free production

Anti-LYPD3 antibody [SP208] (ab183357)

Please note: All products are "FOR RESEARCH USE ONLY. NOT FOR USE IN DIAGNOSTIC PROCEDURES"

Our Abpromise to you: Quality guaranteed and expert technical support

- Replacement or refund for products not performing as stated on the datasheet
- Valid for 12 months from date of delivery
- Response to your inquiry within 24 hours
- We provide support in Chinese, English, French, German, Japanese and Spanish
- Extensive multi-media technical resources to help you
- We investigate all quality concerns to ensure our products perform to the highest standards

If the product does not perform as described on this datasheet, we will offer a refund or replacement. For full details of the Abpromise, please visit <https://www.abcam.com/abpromise> or contact our technical team.

Terms and conditions

- Guarantee only valid for products bought direct from Abcam or one of our authorized distributors