


Product datasheet

Anti-LYPD3 antibody [SP208] - BSA and Azide free ab246349

Recombinant RabMAb

11 Images

Overview

Product name	Anti-LYPD3 antibody [SP208] - BSA and Azide free
Description	Rabbit monoclonal [SP208] to LYPD3 - BSA and Azide free
Host species	Rabbit
Tested applications	Suitable for: IHC-P
Species reactivity	Reacts with: Human Predicted to work with: Mouse, Rat 
Immunogen	Synthetic peptide. This information is proprietary to Abcam and/or its suppliers.
Positive control	IHC-P: Human skin, esophagus, tonsil, bladder, cervix, breast ductal carcinoma, skin squamous cell carcinoma, and cervical squamous cell carcinoma tissue.
General notes	<p>ab246349 is the carrier-free version of ab183357.</p> <p>Our carrier-free antibodies are typically supplied in a PBS-only formulation, purified and free of BSA, sodium azide and glycerol. The carrier-free buffer and high concentration allow for increased conjugation efficiency.</p> <p>This conjugation-ready format is designed for use with fluorochromes, metal isotopes, oligonucleotides, and enzymes, which makes them ideal for antibody labelling, functional and cell-based assays, flow-based assays (e.g. mass cytometry) and Multiplex Imaging applications.</p> <p>Use our conjugation kits for antibody conjugates that are ready-to-use in as little as 20 minutes with <1 minute hands-on-time and 100% antibody recovery: available for fluorescent dyes, HRP, biotin and gold.</p> <p>This product is compatible with the Maxpar[®] Antibody Labeling Kit from Fluidigm, without the need for antibody preparation. Maxpar[®] is a trademark of Fluidigm Canada Inc.</p> <p>This product is a recombinant monoclonal antibody, which offers several advantages including:</p> <ul style="list-style-type: none">- High batch-to-batch consistency and reproducibility- Improved sensitivity and specificity- Long-term security of supply- Animal-free production <p>For more information see here.</p> <p>This product is FOR RESEARCH USE ONLY. For commercial use, please contact</p>

Properties

Form	Liquid
Storage instructions	Shipped at 4°C. Store at +4°C. Do Not Freeze.
Storage buffer	pH: 7.20 Constituent: PBS
Carrier free	Yes
Purity	Protein A/G purified
Purification notes	Purified from TCS by protein A/G.
Clonality	Monoclonal
Clone number	SP208
Isotype	IgG

Applications

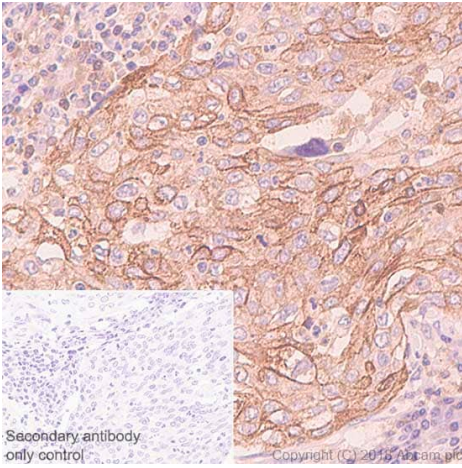
The Abpromise guarantee Our **Abpromise guarantee** covers the use of ab246349 in the following tested applications. The application notes include recommended starting dilutions; optimal dilutions/concentrations should be determined by the end user.

Application	Abreviews	Notes
IHC-P		Use at an assay dependent concentration. Perform heat mediated antigen retrieval with citrate buffer pH 6 before commencing with IHC staining protocol.

Target

Function	Supports cell migration. May be involved in urothelial cell-matrix interactions. May be involved in tumor progression.
Tissue specificity	Expressed in placenta, skin and urothelium. Found in suprabasal keratinocytes of chronic wounds. Weak expression is found in esophagus and peripheral blood mononuclear cells. Found in the majority of primary and metastatic transitional cell carcinomas (TCCs) and as well in breast cancer tissues, but not in adjacent normal tissues. High expression is found in the tumor component of some noninvasive superficial lesions and in invasive and metastatic urothelial cancers.
Sequence similarities	Contains 2 UPAR/Ly6 domains.
Post-translational modifications	N-glycosylated and O-glycosylated.
Cellular localization	Cell membrane.

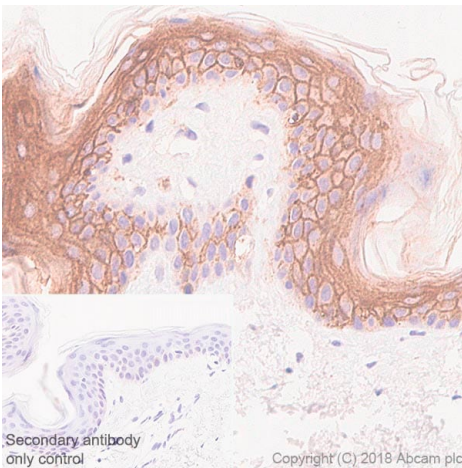
Images



Immunohistochemistry (Formalin/PFA-fixed paraffin-embedded sections) - Anti-LYPD3 antibody [SP208]
- BSA and Azide free (ab246349)

Immunohistochemistry (Formalin/PFA-fixed paraffin-embedded sections) analysis of Human cervix carcinoma tissue sections labeling LYPD3 with **ab183357** at 1/100 dilution (4.65 µg/ml). Heat mediated antigen retrieval was performed Heat mediated antigen retrieval with sodium citrate buffer (pH 6.0, epitope retrieval solution 1) for 20 mins. Rabbit specific IHC polymer detection kit HRP/DAB (**ab209101**) was used as the secondary antibody. Negative control: PBS instead of the primary antibody. Hematoxylin was used as a counterstain.

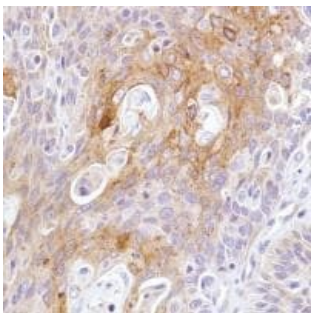
This data was developed using the same antibody clone in a different buffer formulation containing PBS, BSA, glycerol, and sodium azide (**ab183357**)



Immunohistochemistry (Formalin/PFA-fixed paraffin-embedded sections) - Anti-LYPD3 antibody [SP208]
- BSA and Azide free (ab246349)

Immunohistochemistry (Formalin/PFA-fixed paraffin-embedded sections) analysis of Human skin tissue sections labeling LYPD3 with **ab183357** at 1/100 dilution (4.65 µg/ml). Heat mediated antigen retrieval was performed Heat mediated antigen retrieval with sodium citrate buffer (pH 6.0, epitope retrieval solution 1) for 20 mins. Rabbit specific IHC polymer detection kit HRP/DAB (**ab209101**) was used as the secondary antibody. Negative control: PBS instead of the primary antibody. Hematoxylin was used as a counterstain.

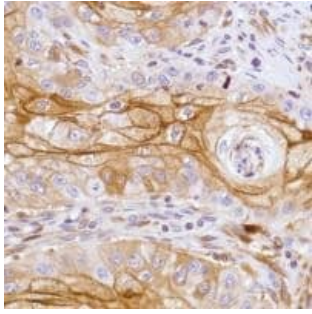
This data was developed using the same antibody clone in a different buffer formulation containing PBS, BSA, glycerol, and sodium azide (**ab183357**)



Immunohistochemistry (Formalin/PFA-fixed paraffin-embedded sections) - Anti-LYPD3 antibody [SP208]
- BSA and Azide free (ab246349)

Immunohistochemical analysis of formalin-fixed, paraffin-embedded Human cervical squamous cell carcinoma tissue labeling LYPD3 with **ab183357** at 1/100 dilution.

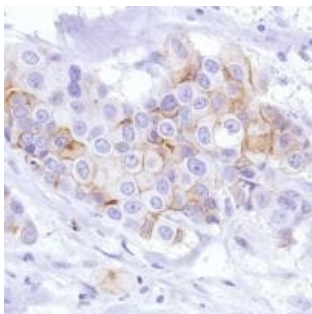
This data was developed using the same antibody clone in a different buffer formulation containing PBS, BSA, glycerol, and sodium azide (**ab183357**).



Immunohistochemistry (Formalin/PFA-fixed paraffin-embedded sections) - Anti-LYPD3 antibody [SP208]
- BSA and Azide free (ab246349)

Immunohistochemical analysis of formalin-fixed, paraffin-embedded Human skin squamous cell carcinoma tissue labeling LYPD3 with **ab183357** at 1/100 dilution.

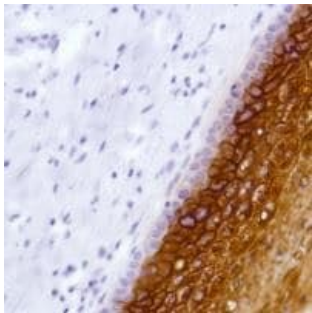
This data was developed using the same antibody clone in a different buffer formulation containing PBS, BSA, glycerol, and sodium azide (**ab183357**).



Immunohistochemistry (Formalin/PFA-fixed paraffin-embedded sections) - Anti-LYPD3 antibody [SP208]
- BSA and Azide free (ab246349)

Immunohistochemical analysis of formalin-fixed, paraffin-embedded Human breast ductal cell carcinoma tissue labeling LYPD3 with **ab183357** at 1/100 dilution.

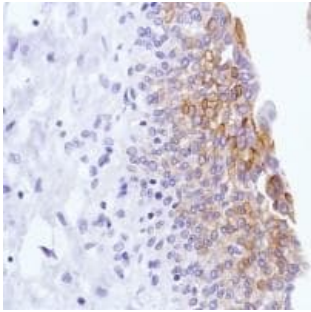
This data was developed using the same antibody clone in a different buffer formulation containing PBS, BSA, glycerol, and sodium azide (**ab183357**).



Immunohistochemistry (Formalin/PFA-fixed paraffin-embedded sections) - Anti-LYPD3 antibody [SP208]
- BSA and Azide free (ab246349)

Immunohistochemical analysis of formalin-fixed, paraffin-embedded Human cervix tissue labeling LYPD3 with **ab183357** at 1/100 dilution.

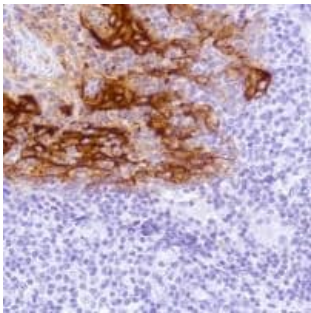
This data was developed using the same antibody clone in a different buffer formulation containing PBS, BSA, glycerol, and sodium azide (**ab183357**).



Immunohistochemistry (Formalin/PFA-fixed paraffin-embedded sections) - Anti-LYPD3 antibody [SP208]
- BSA and Azide free (ab246349)

Immunohistochemical analysis of formalin-fixed, paraffin-embedded Human bladder tissue labeling LYPD3 with [ab183357](#) at 1/100 dilution.

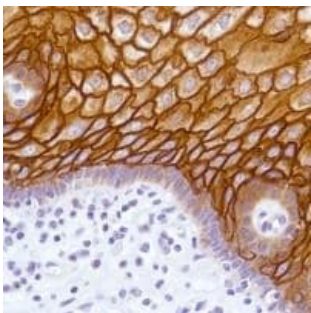
This data was developed using the same antibody clone in a different buffer formulation containing PBS, BSA, glycerol, and sodium azide ([ab183357](#)).



Immunohistochemistry (Formalin/PFA-fixed paraffin-embedded sections) - Anti-LYPD3 antibody [SP208]
- BSA and Azide free (ab246349)

Immunohistochemical analysis of formalin-fixed, paraffin-embedded Human tonsil tissue labeling LYPD3 with [ab183357](#) at 1/100 dilution.

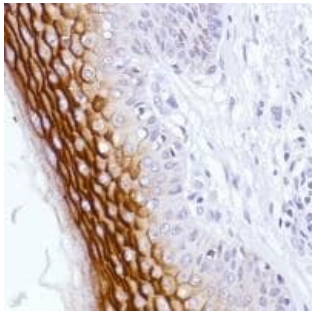
This data was developed using the same antibody clone in a different buffer formulation containing PBS, BSA, glycerol, and sodium azide ([ab183357](#)).



Immunohistochemistry (Formalin/PFA-fixed paraffin-embedded sections) - Anti-LYPD3 antibody [SP208]
- BSA and Azide free (ab246349)

Immunohistochemical analysis of formalin-fixed, paraffin-embedded Human esophagus tissue labeling LYPD3 with [ab183357](#) at 1/100 dilution.

This data was developed using the same antibody clone in a different buffer formulation containing PBS, BSA, glycerol, and sodium azide ([ab183357](#)).



Immunohistochemical analysis of formalin-fixed, paraffin-embedded Human skin tissue labeling LYPD3 with **ab183357** at 1/100 dilution.

This data was developed using the same antibody clone in a different buffer formulation containing PBS, BSA, glycerol, and sodium azide (**ab183357**).

Immunohistochemistry (Formalin/PFA-fixed paraffin-embedded sections) - Anti-LYPD3 antibody [SP208]
- BSA and Azide free (ab246349)

Why choose a recombinant antibody?



Research with confidence
Consistent and reproducible results



Long-term and scalable supply
Recombinant technology



Success from the first experiment
Confirmed specificity



Ethical standards compliant
Animal-free production

Anti-LYPD3 antibody [SP208] - BSA and Azide free (ab246349)

Please note: All products are "FOR RESEARCH USE ONLY. NOT FOR USE IN DIAGNOSTIC PROCEDURES"

Our Abpromise to you: Quality guaranteed and expert technical support

- Replacement or refund for products not performing as stated on the datasheet
- Valid for 12 months from date of delivery
- Response to your inquiry within 24 hours
- We provide support in Chinese, English, French, German, Japanese and Spanish
- Extensive multi-media technical resources to help you
- We investigate all quality concerns to ensure our products perform to the highest standards

If the product does not perform as described on this datasheet, we will offer a refund or replacement. For full details of the Abpromise, please visit <https://www.abcam.com/abpromise> or contact our technical team.

Terms and conditions

- Guarantee only valid for products bought direct from Abcam or one of our authorized distributors